

BELLEVUE TERRACE TRACT

contains Blocks and fractional Blocks No. 101, 102, 103, 104, 105, 106, 107, 108, 109, and 110. It is bounded on the North and West by the "Mott Tract" and other lands, on the South West by Sixth Street, and on the South East by Olive Street. Sixth and Fifth Streets are each 60 feet wide, and Olive, Charity, Hope, Flower, Grasshopper and Beauvery Streets are each 80 feet wide; the full Lots are 60 Feet Front by 165 Feet deep.

BALLESTEROS TRACT

was formerly the Vineyard and Orchard known under the same Name, bounded on the Old Aliso Road on the North West and North East, and by the Aliso Property on the South West and South East. It is crossed by Remus, Howard and Center Streets, each of which is 60 Feet wide; the Full Lots are 60 Feet Front by either 100 or 125 Feet deep.

BEAUVRY TRACT

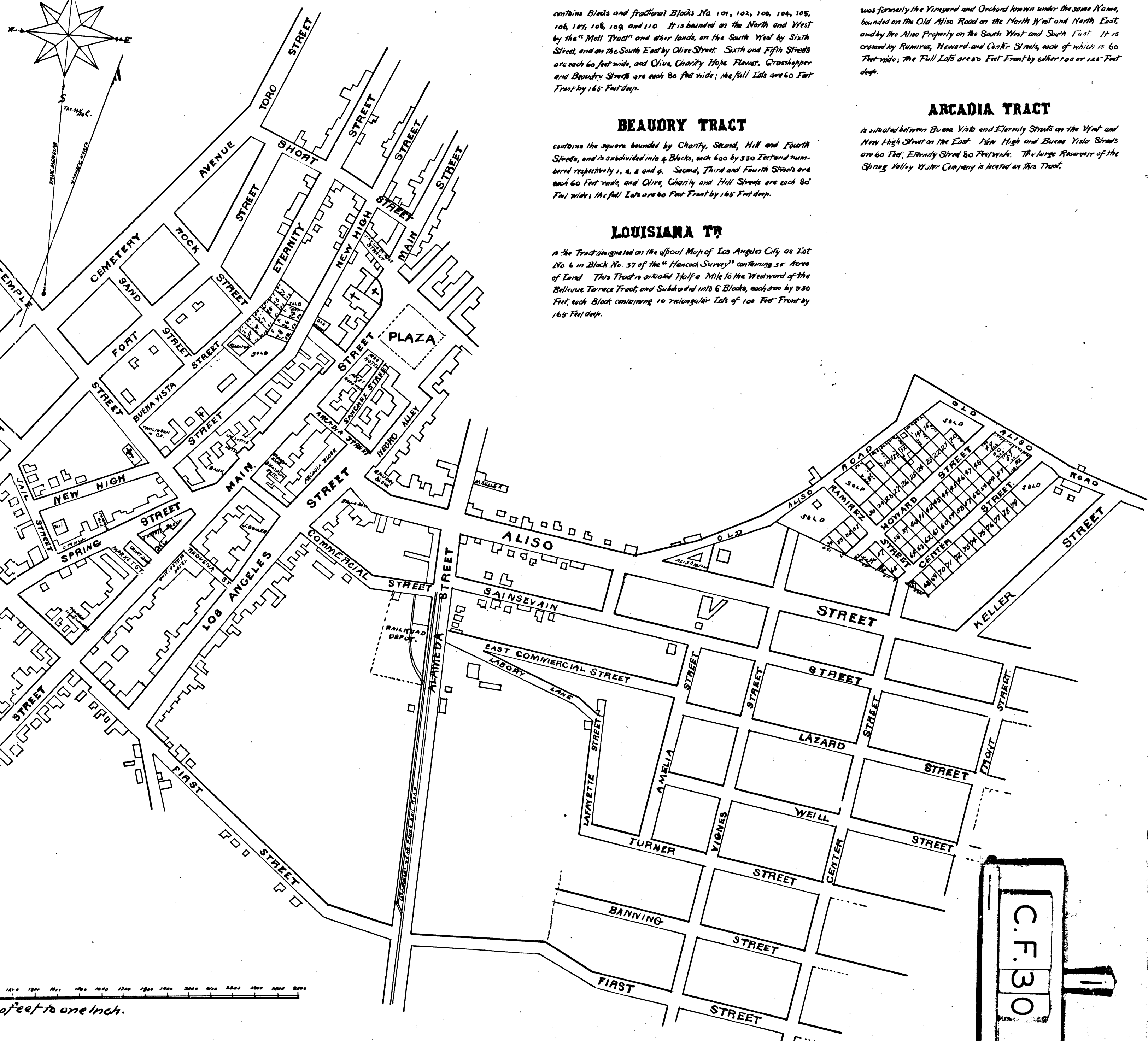
contains the square bounded by Charity, Second, Hill and Fourth Streets, and is subdivided into 4 Blocks, each 600 by 330 Feet and numbered respectively 1, 2, 3 and 4. Second, Third and Fourth Streets are each 60 Feet wide, and Olive, Charity and Hill Streets are each 80 Feet wide; the full Lots are 60 Feet Front by 165 Feet deep.

ARCADIA TRACT

is situated between Buena Vista and Eternity Streets on the West and New High Street on the East. New High and Buena Vista Streets are 60 Feet, Eternity Street 80 Feet wide. The large Reservoir of the Spring Valley Water Company is located on this Tract.

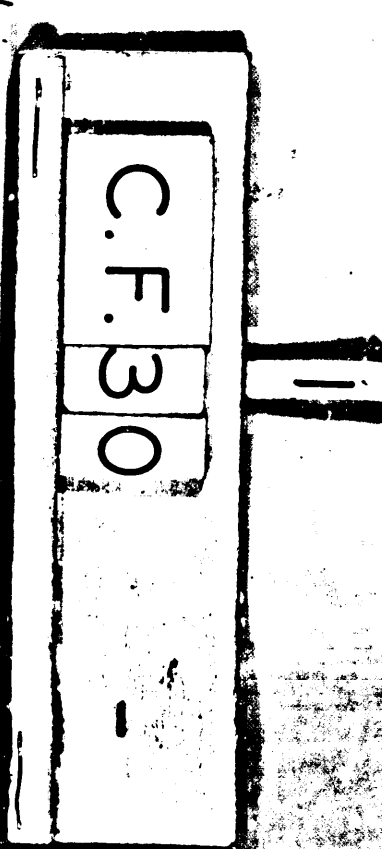
LOUISIANA TR

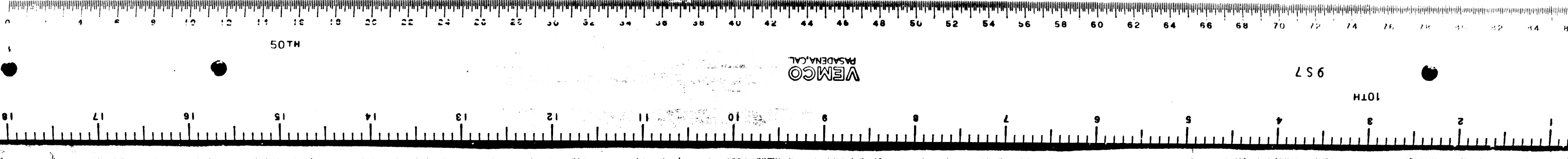
is the Tract designated on the official Map of Los Angeles City as Lot No. 6 in Block No. 37 of the "Hancock Survey" containing 35 Acres of Land. This Tract is situated Half a Mile to the Westward of the Bellevue Terrace Tract, and Subdivided into 6 Blocks, each 300 by 330 Feet, each Block containing 10 rectangular Lots of 100 Feet Front by 165 Feet deep.



1 inch = 100 feet

District Court No. 1787





50TH

VEMCO PASADENA, CAL.

LS 6

H101

MAP

of a portion of the city

Los Angeles

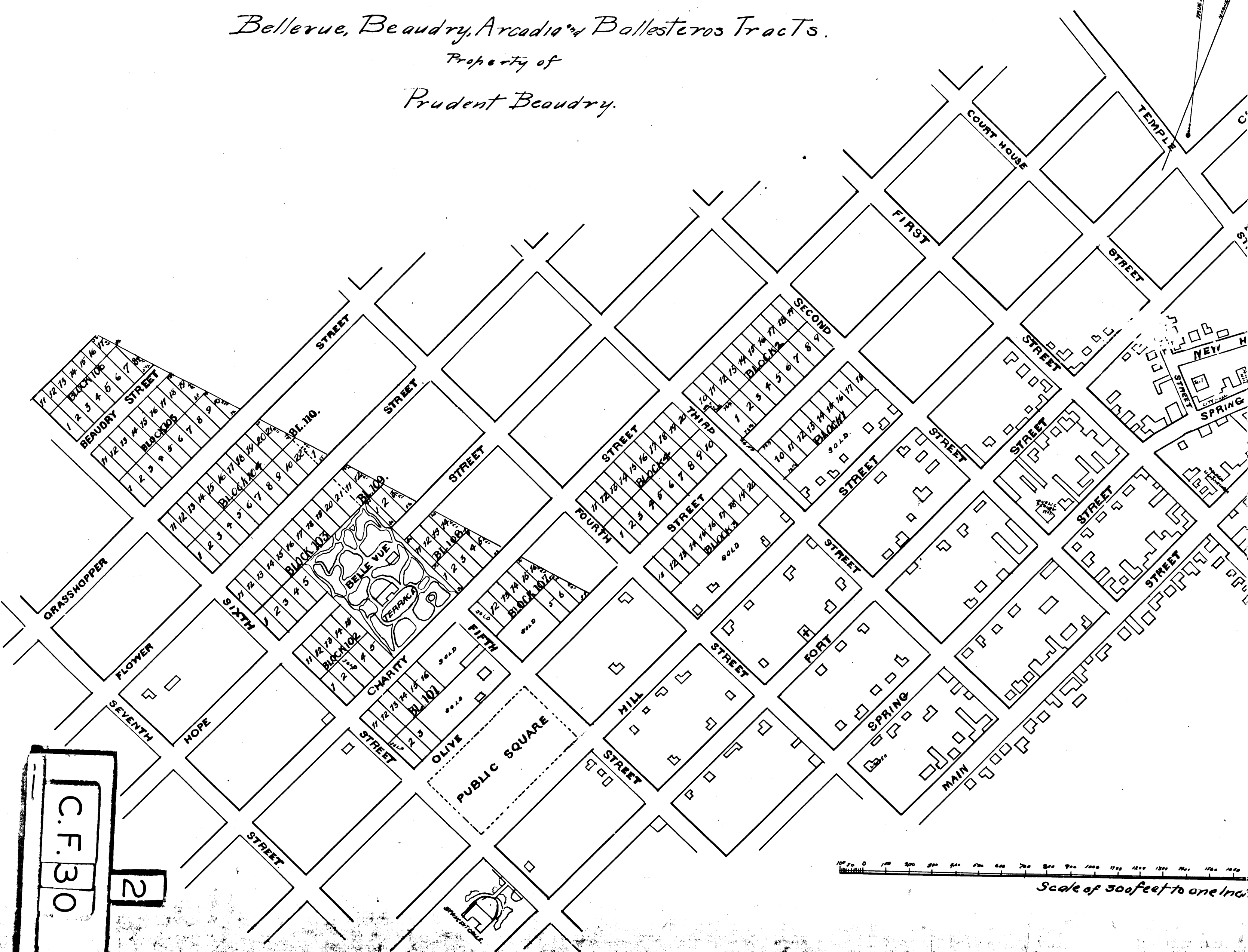
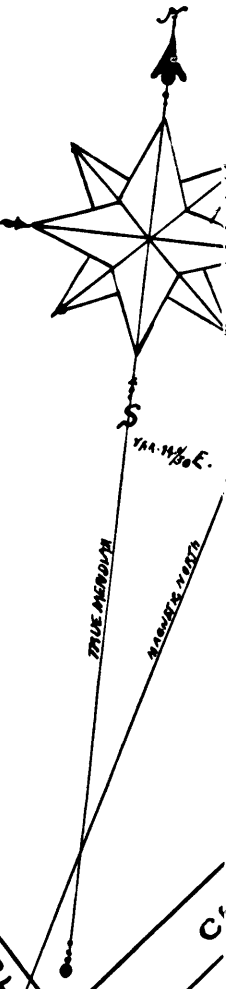
California.

Showing
The

Bellerue, Beaudry, Arcadia & Ballesteros Tracts.

Property of

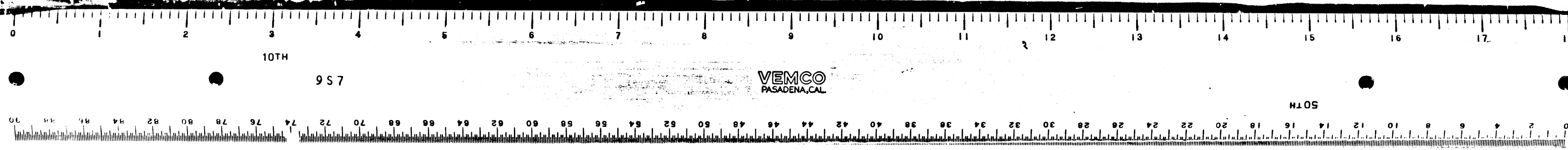
Prudent Beaudry.



C.F. 30

2

Scale of 300 feet to one inch



10TH

957

VEMCO PASADENA, CAL.

H105