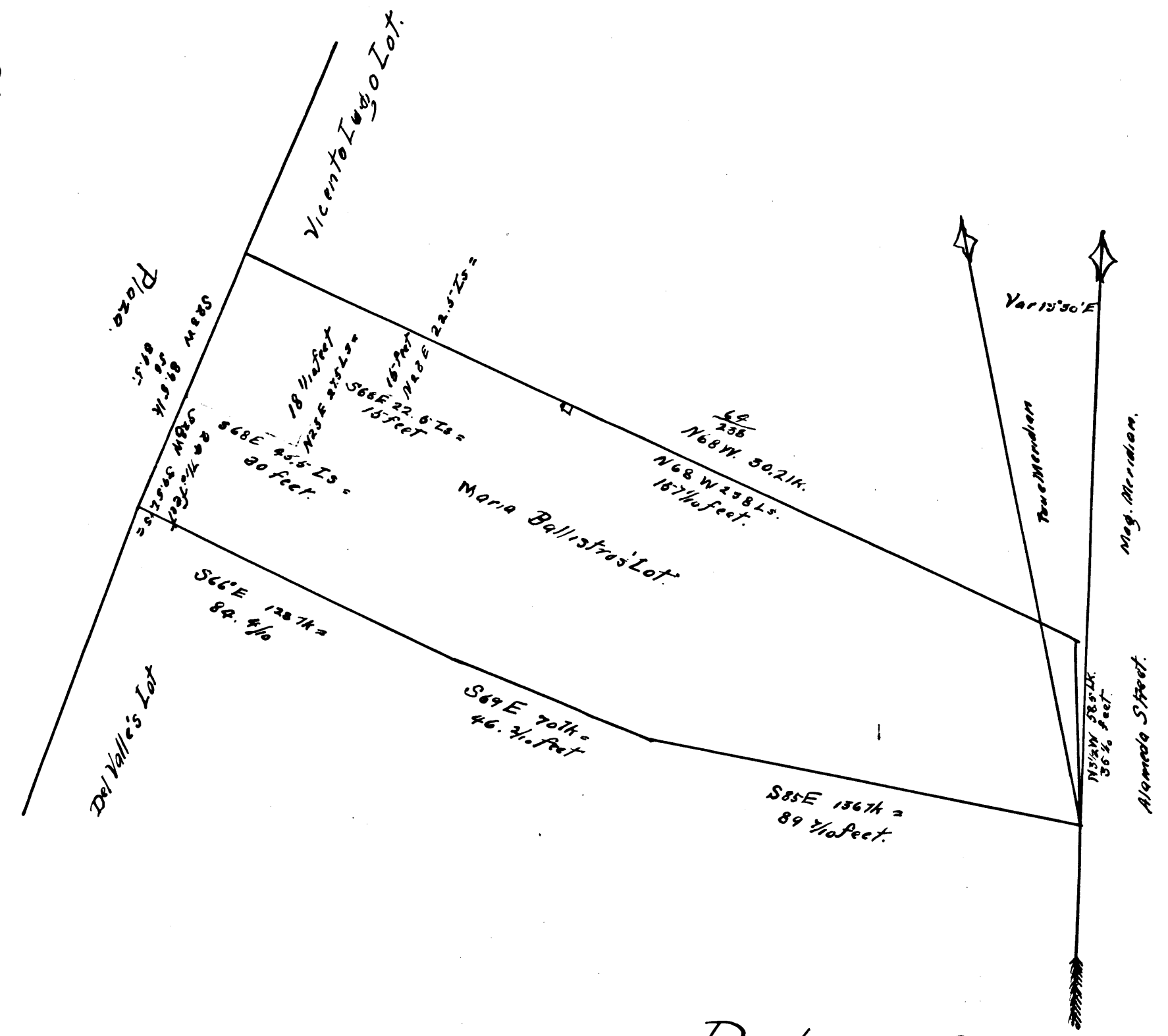


I hereby certify this to be a correct
 copy of a plat of a Survey executed
 by me February 2nd 1858
 Juan Y Cot Deputy County
 Surveyor of
 Los Angeles County.

Title given on six day of March A.D. 1858.
 John & Nicholas
 Mayor.



District Court
 No. 1829

C.F. 33

Scale of 2 inches to the chain.
 Courses are Magnetic.