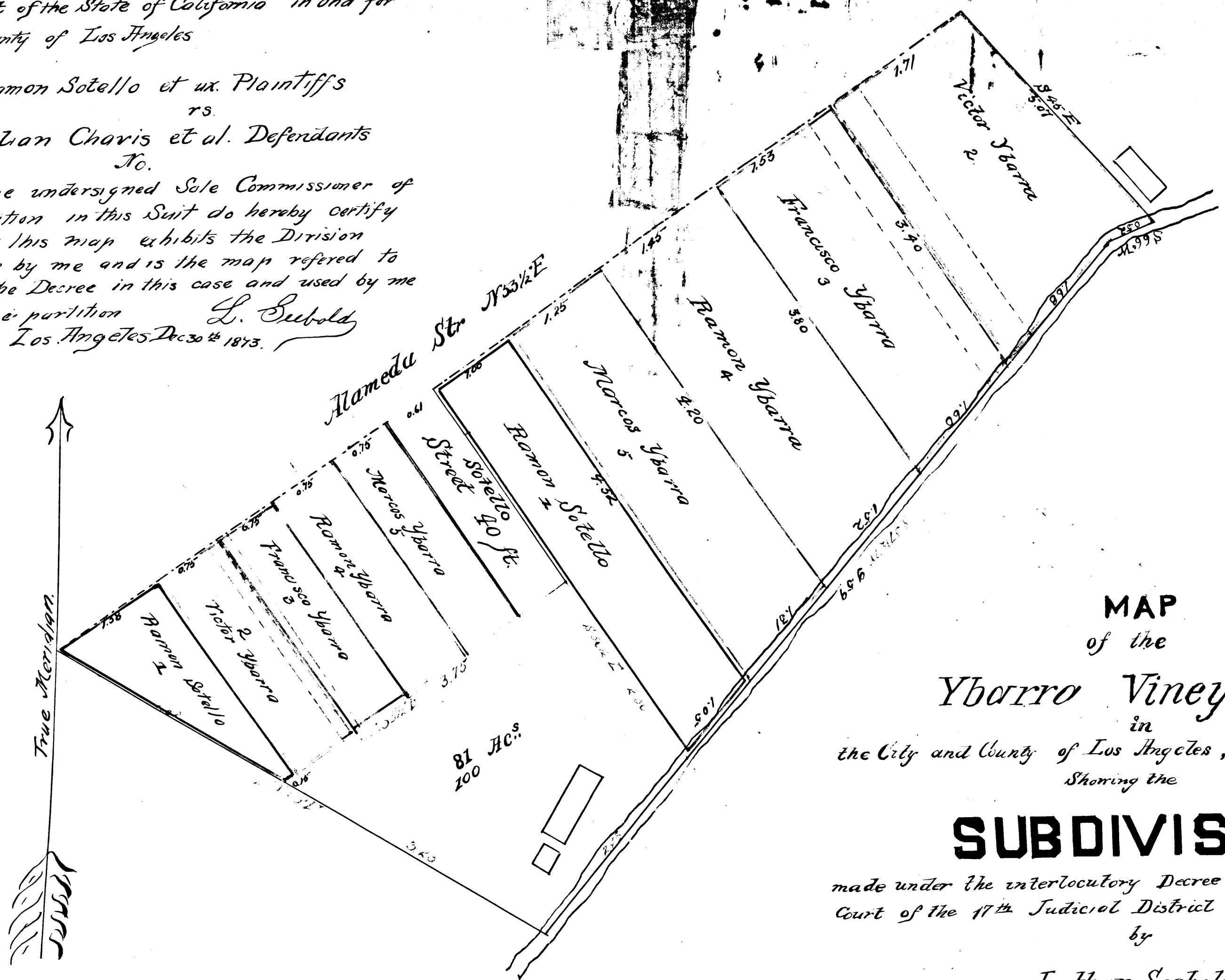


In the District Court of the 17th Judicial
 District of the State of California in and for
 the County of Los Angeles

Ramon Sotello et ux. Plaintiffs
 vs.
 Julian Charis et al. Defendants
 No.

I the undersigned Sole Commissioner of
 Partition in this Suit do hereby certify
 that this map exhibits the Division
 made by me and is the map referred to
 in the Decree in this case and used by me
 in the partition
 L. Seebold
 Los Angeles Dec 30th 1873.



MAP
 of the
 Ybarro Vineyard
 in
 the City and County of Los Angeles, California
 Showing the

SUBDIVISION

made under the interlocutory Decree of the District
 Court of the 17th Judicial District of date Oct. 1st 1873.
 by

Lothar Seebold
 Sole Commissioner of partition
 in November 1873

Scale of One inch to One Chain
 True Courses Var. 14° 45' E

District Court
 No. 2146

C.F. 38 -