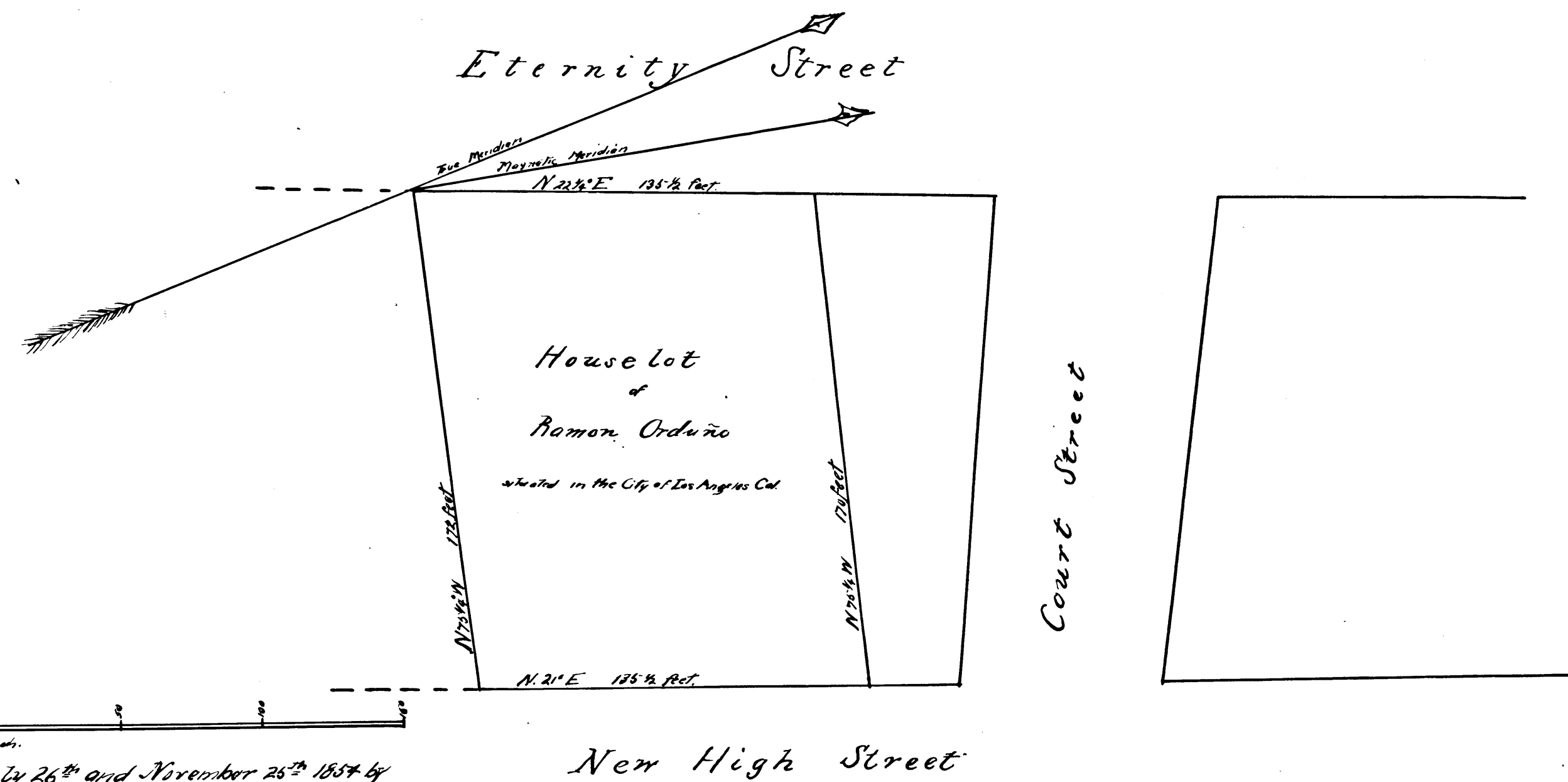


1057
1058
1059



Var. $12^{\circ} 44' E$
Scale of 50 Feet to the inch.
Surveyed July 26th and November 26th 1854 by
G. Hansen Dep. County Surveyor of Los Angeles Co.

I hereby certify the above to be a correct copy of a plot of a
survey executed by me July the 26th & Nov. 25th 1854.
Los Angeles City Dec. 16th 1854.
Geo Hansen Deputy County Surveyor of Los Angeles County.

Ex 10"

District Court
No 2281

C.F. 40 1/2 -

