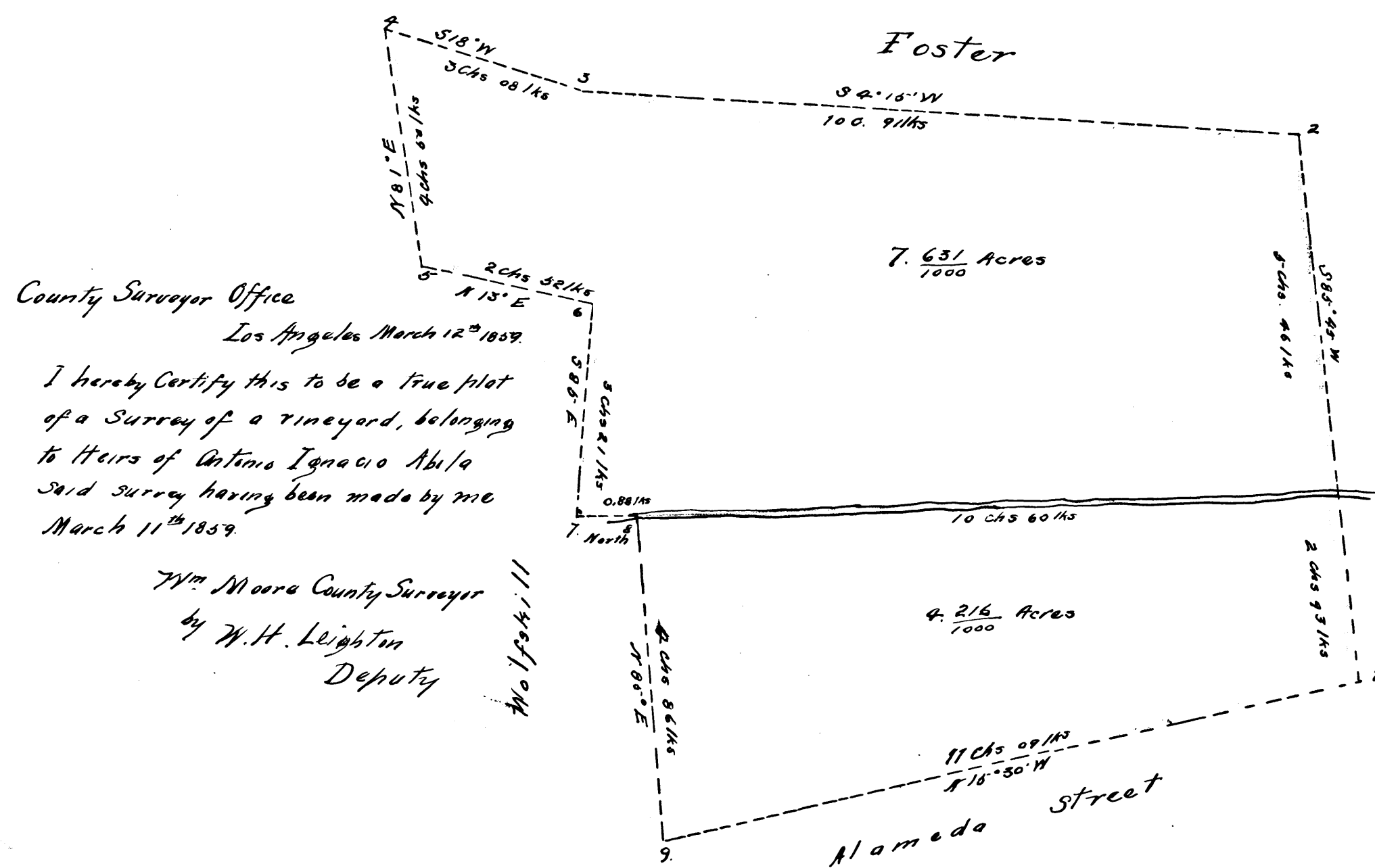


Plat of Vineyard belonging to  
Heirs of Ignacio Abila

Surveyed March 11<sup>th</sup> 1859  
by W. H. Leighton  
Deputy Co. Surveyor  
Los Angeles County.



County Surveyor Office  
Los Angeles March 12<sup>th</sup> 1859.

I hereby Certify this to be a true plat  
of a Survey of a vineyard, belonging  
to Heirs of Antonio Ignacio Abila  
said Survey having been made by me  
March 11<sup>th</sup> 1859.

Wm. Moore County Surveyor  
by W. H. Leighton  
Deputy

No 1/2 chs 11

Scale of 2 chs to 1 inch  
Courses Magnetic.

District Court  
No. 9003

