

**SUBDIVISION OF BLOCK**

the property of L. Wolfskil

Los Angeles, Cal.

O. W. Childs.

J. W. Haverstick

**T W E L F T H**

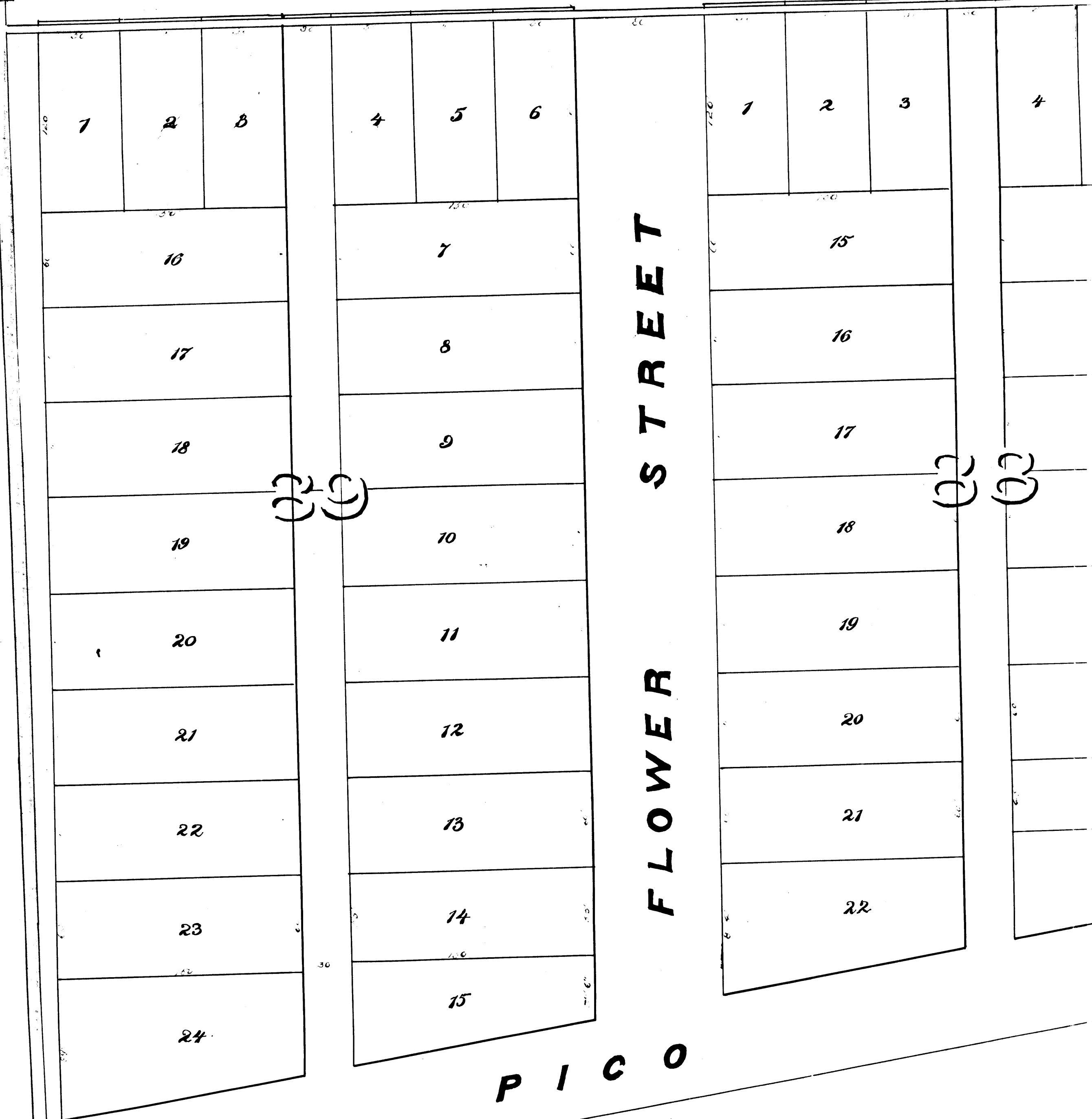
C.F. 53

**P E A R L  
S T R E E T**

**S T R E E T**

**F L O W E R**

**P I C O**



Scale: 50 feet to 1 inch

# OF BLOCKS 88 & 89

Party of L. Wolfskill Esqr

Los Angeles, Cal.

O. W. Childs.

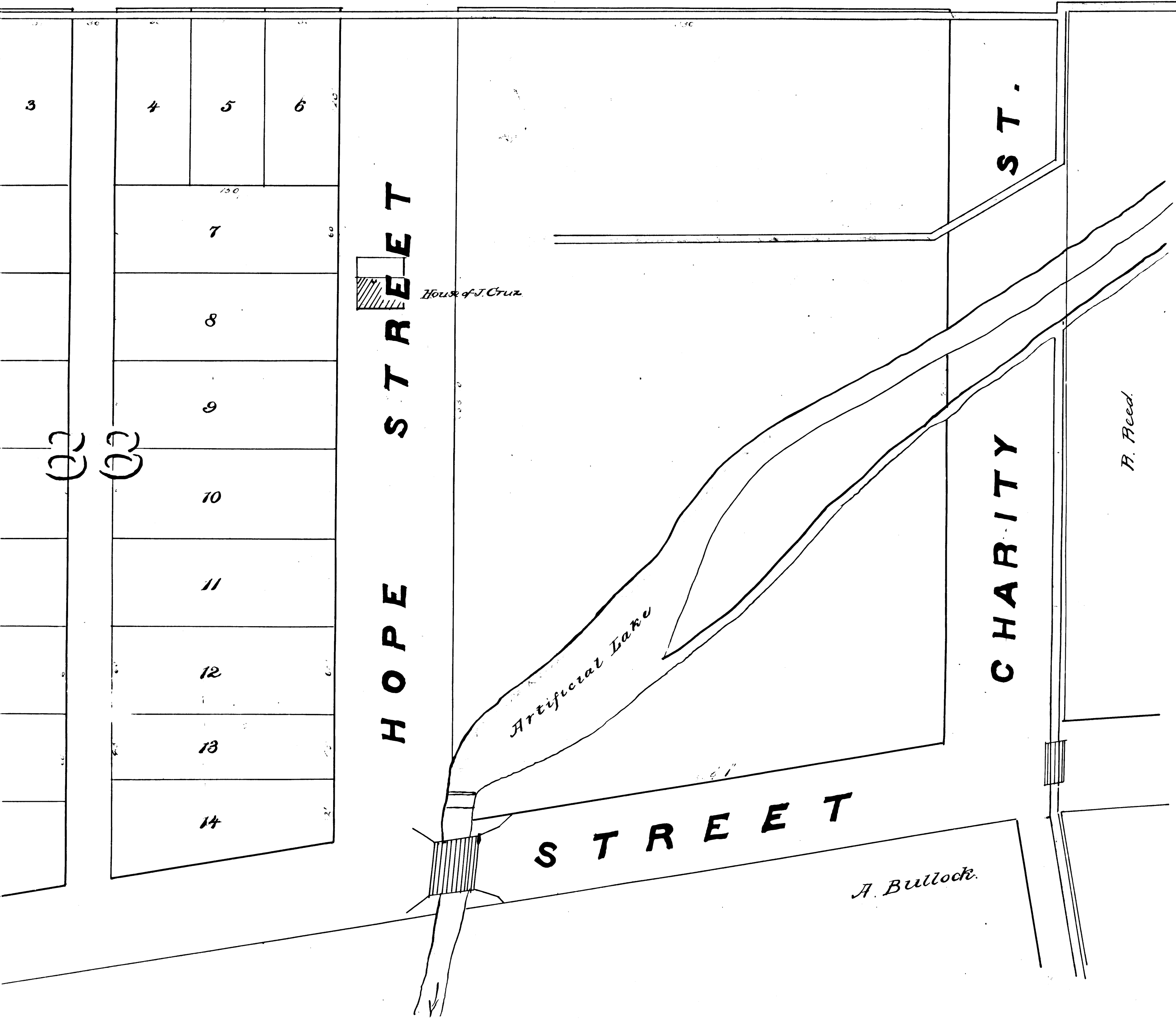
J. E. Ward.

2

C.F. 53

H

S T R E E T



District Court  
No. 7130

Surveyed & drawn, April 1875

Rumble & Gortney  
Engrs

Scale: 50 feet to 1 inch