



Andres Machado					acres
Tract	1 st class	2 ^d class	3 ^d class	4 th class	Total
1	17.9037				17.9037
2		17.1855			17.1855
3			36.7641		36.7641
4			61.9733		61.9733
5				26.3891	26.3891

3

C.F. 64



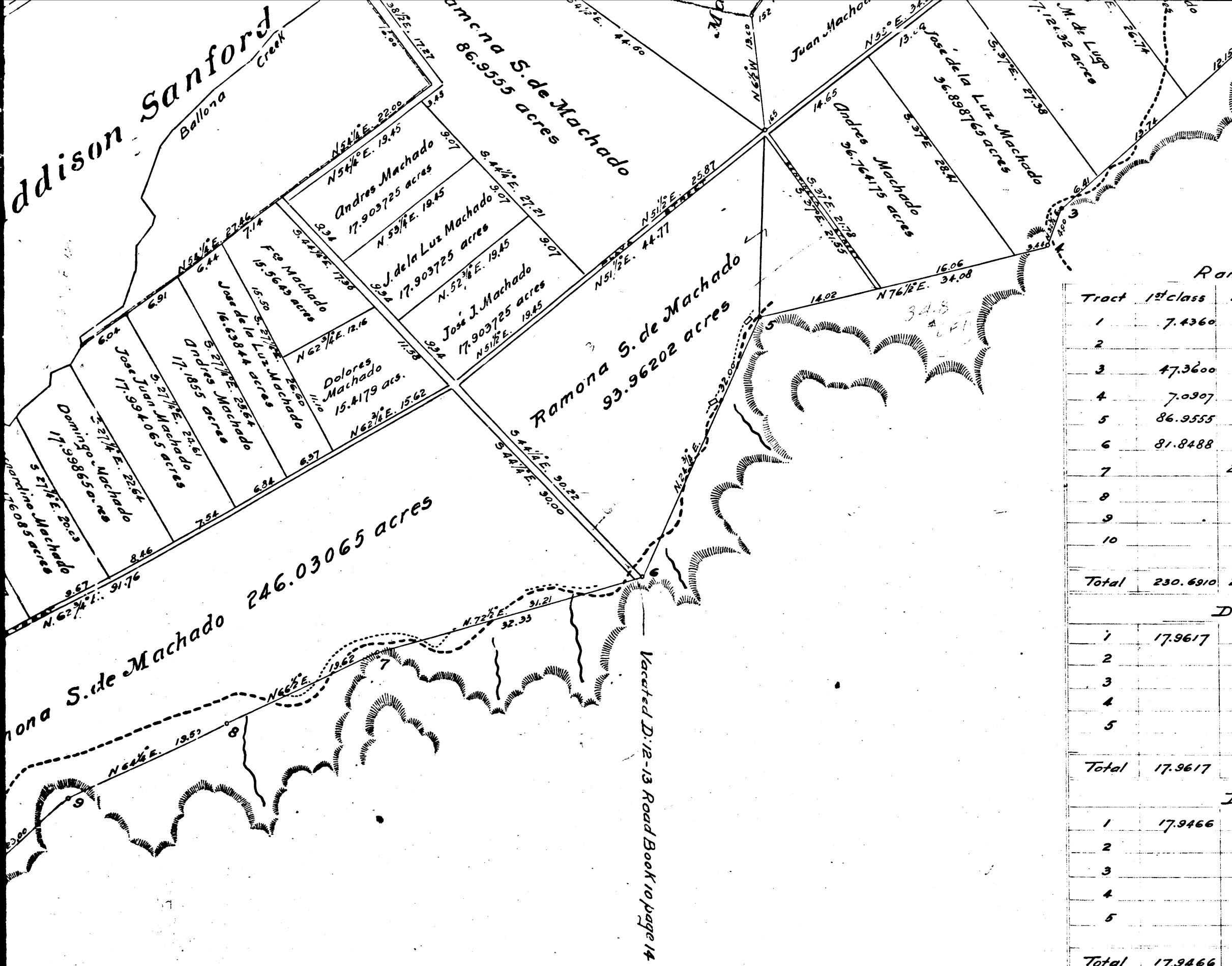


Table of Partition

Interest	1 st class	2 nd class	3 rd class	4 th class	Total
Ramona S. de Machado	230.6910	246.0306	1271.8881	341.8509	2090.4606
Domingo Machado	17.9617	17.9986	100.6755	26.3500	162.9858
Dolores Machado	17.9466	15.4179	98.4981	26.2368	158.0994
Bernardino Machado	18.0905	19.1760	103.1283	26.4099	166.8047
Francisco Machado	17.0868	15.5643	98.0573	26.1436	156.8520
Juan Machado	17.1983	18.9111	99.2544	26.2884	161.6522
Jose Juan Machado	17.9037	17.9940	100.4496	26.3295	162.6768
Andres Machado	17.9037	17.1855	98.7374	26.3891	160.2157
Jose de la Luz Machado	17.9037	16.6384	98.8720	26.3083	159.7224
Vicenta M. de Lugo	17.9470	21.2800	99.0869	26.3679	164.6818
Ascension Machado	17.8334	21.4100	99.1070	26.2859	164.6363
Susana M. de Bernardo	17.9000	20.9326	98.7703	26.1677	163.7706
Candelaria Machado	17.8700	21.1530	97.8636	26.3841	163.2707
Martina M. de Cota	18.0246	20.3175	99.7932	26.1892	164.3245
Road & Streets	5.4680	4.6340	18.3330	8.4180	36.8530
Total	467.7230	494.6435	2582.5147	692.1193	4237.0065

Ramona S. de Machado acres

Tract	1 st class	2 nd class	3 rd class	4 th class	Total
1	7.4360				7.4360
2			15.5712		15.5712
3	47.3600		21.5200		68.8800
4	7.0907				7.0907
5	86.9555				86.9555
6	81.8488		12.1132		93.9620
7		246.0306			246.0306
8				341.8509	341.8509
9			417.3302		417.3302
10			805.3535		805.3535
Total	230.6910	246.0306	1271.8881	341.8509	2090.4606

Domingo Machado

Tract	1 st class	2 nd class	3 rd class	4 th class	Total
1	17.9617				17.9617
2		17.9986			17.9986
3			38.6862		38.6862
4			61.9893		61.9893
5				26.3500	26.3500
Total	17.9617	17.9986	100.6755	26.3500	162.9858

Dolores Machado

Tract	1 st class	2 nd class	3 rd class	4 th class	Total
1	17.9466				17.9466
2		15.4179			15.4179
3			37.3198		37.3198
4			61.1783		61.1783
5				26.2368	26.2368
Total	17.9466	15.4179	98.4981	26.2368	158.0994

Bernardino Machado

Tract	1 st class	2 nd class	3 rd class	4 th class	Total
1	18.0905				18.0905
2		19.1760			19.1760
3			41.1390		41.1390
4			61.9893		61.9893
5				26.4099	26.4099
Total	18.0905	19.1760	103.1283	26.4099	166.8047

Francisco Machado

Tract	1 st class	2 nd class	3 rd class	4 th class	Total
1	17.0868				17.0868
2		15.5643			15.5643
3			37.4972		37.4972
4			60.5601		60.5601
5				26.1436	26.1436
Total	17.0868	15.5643	98.0573	26.1436	156.8520

Juan Machado

Tract	1 st class	2 nd class	3 rd class	4 th class	Total
1	17.1983				17.1983
2		18.9111			18.9111
3			37.4886		37.4886
4			61.7658		61.7658
5				26.2884	26.2884
Total	17.1983	18.9111	99.2544	26.2884	161.6522

Jose Juan Machado

Tract	1 st class	2 nd class	3 rd class	4 th class	Total
1	17.9037				17.9037
2		17.9940			17.9940
3			38.4530		38.4530
4			61.9966		61.9966
5				26.3295	26.3295
Total	17.9037	17.9940	100.4496	26.3295	162.6768

Andres Machado acres

Tract	1 st class	2 nd class	3 rd class	4 th class	Total
1	17.9037				17.9037
2		17.1855			17.1855
3			36.7441		36.7441
4			61.9733		61.9733
5				26.3891	26.3891
Total	17.9037	17.1855	98.7374	26.3891	160.2157

Jose de la Luz Machado

Tract	1 st class	2 nd class	3 rd class	4 th class	Total
1	17.9037				17.9037
2		16.6384			16.6384
3			36.8987		36.8987
4			61.9733		61.9733
5				26.3083	26.3083
Total	17.9037	16.6384	98.8720	26.3083	159.7224

Vicenta M. de Lugo

Tract	1 st class	2 nd class	3 rd class	4 th class	Total
1	17.9470				17.9470
2		21.2800			21.2800
3			37.1263		37.1263
4			61.9606		61.9606
5				26.3679	26.3679
Total	17.9470	21.2800	99.0869	26.3679	164.6818

Ascension Machado

Tract	1 st class	2 nd class	3 rd class	4 th class	Total
1	17.8334				17.8334
2		21.4100			21.4100
3			31.5967		31.5967
4			61.7345		61.7345
5				26.2859	26.2859
Total	17.8334	21.4100	99.1070	26.2859	164.6363

Susana M. de Bernardo

Tract	1 st class	2 nd class	3 rd class	4 th class	Total
1	16.6929				16.6929
2		20.9326			20.9326
3			29.6837		29.6837
4			61.9966		61.9966
5				26.1677	26.1677
Total	17.9000	20.9326	98.7703	26.1677	163.7706

Candelaria Machado

Tract	1 st class	2 nd class	3 rd class	4 th class	Total
1	17.8700				17.8700
2		21.1530			21.1530
3			32.9556		32.9556
4			60.9380		60.9380
5				26.3841	26.3841
Total	17.8700	21.1530	97.8636	26.3841	163.2707

Martina M. de Cota

Tract	1 st class	2 nd class	3 rd class	4 th class	Total
1	18.0246				18.0246
2		20.3175			20.3175
3			37.8039		37.8039
4			61.9893		61.9893
5				26.1892	26.1892
Total	18.0246	20.3175	99.7932	26.1892	164.3245

Roads & Streets

Tract	1 st class	2 nd class	3 rd class	4 th class	Total
1	1.5240				1.5240
2		4.8990			4.8990
3			3.2030		3.2030
4				4.1960	4.1960
5				2.2650	2.2650
6		4.6340			4.6340
7				8.4180	8.4180
Total	5.4680	4.6340	18.3330	8.4180	36.8530

4

C.F. 64

Antonio,

Rafael

and

Cris

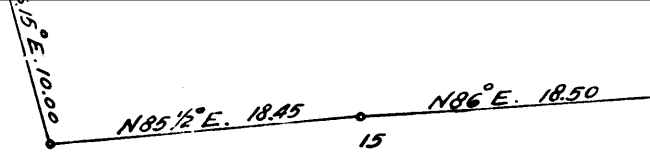
Geo. Addison - Sanford

Jesus Talamantes

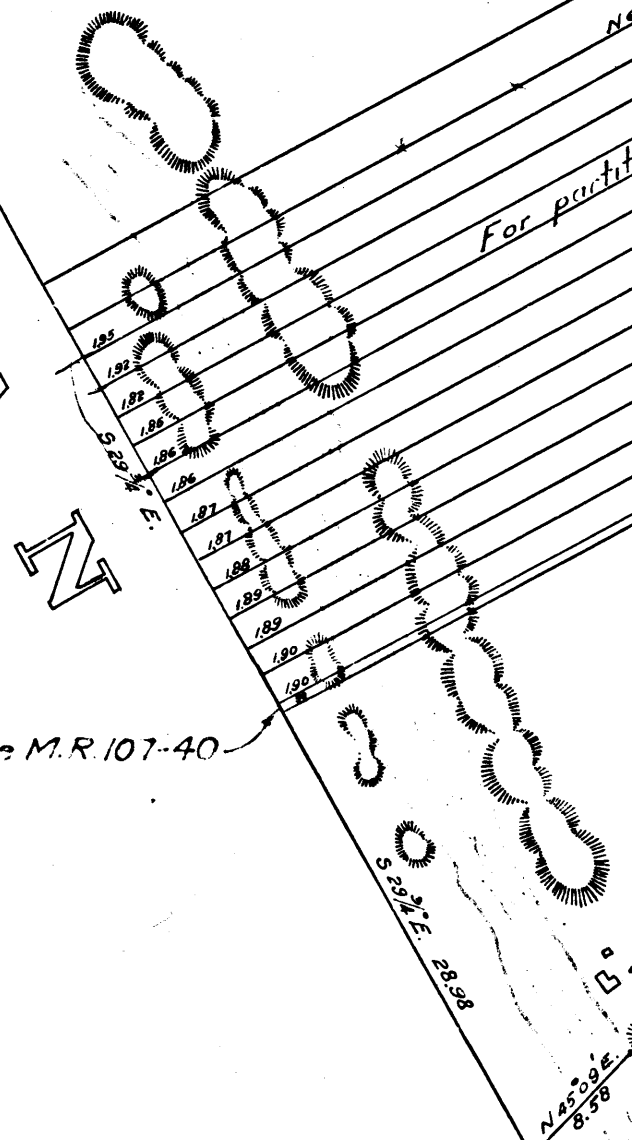
Ramona S. de Machado 246.03065 acres

Ramona S. de Machado

341.85095 acres



COCEAN



- For partition of this parcel
- Francisco and Dolores Machado 44.17acs.
 - Francisco Machado 26.14365 acres
 - Dolores Machado 26.33689 acres
 - Susana M. Bernardo 26.16772 acres
 - Martina M. de Cota S.C.C. 26.18828 acres N.R. 17-17-79
 - Candelaria Machado 26.38410 acres
 - Ascension Machado 26.28598 acres
 - Vicenta M. de Lugo 26.36793 acres
 - Domingo Machado 26.2884 acres
 - Bernardino Machado 26.35008 acres
 - José Juan Machado 26.4099 acres
 - Andrés Machado 26.32959 acres
 - José de la Luz Machado 26.38910 acres
 - José de la Luz Machado 26.30835 acres
 - N61° E. 138.65 chs.

For vacation por Playa Street see M.R. 107-40
For Ballona Creek see C.5894 Sh. 1 and 2

In the District Court of the 17th Judicial District
of the State of California, in and for the County
of Los Angeles,

Ramona S. de Machado }
vs } No 2722
Domingo Machado et al }

I the undersigned referee, appointed to make
partition in the above suit, hereby certify this
to be the map referred in my report of partition
of this date. Los Angeles April 12th 1876

Geo. Hansen.

Table of Interest

Ramona S. de Machado	1/2	23
Domingo Machado	1/26	
Dolores Machado	1/26	
Bernardino Machado	1/26	
Francisco Machado	1/26	
Juan Machado	1/26	
José Juan Machado	1/26	
Andrés Machado	1/26	
José de la Luz Machado	1/26	
Vicenta M. de Lugo	1/26	
Ascension Machado	1/26	
Susana M. de Bernardo	1/26	
Candelaria Machado	1/26	
Martina M. de Cota	1/26	
Road & Streets		
Total	acres	46

5
C.F. 64

Scale of one inch to one mile

17th District Court
 Los Angeles County
 Ramona S. de Machado
 vs
 Domingo Machado et al.

Filed April 19th 1876
 C.W. Potts, Clerk
 By D.W. Maclellan
 Deputy

Recorded at request of F.H. Howard Atty for Plffs. April 29th 1876 at 9 A.M.
 in Book No 3 Miscellaneous Records pages 204, 205, 206, 207 & 208

For copy of this map
 see M.R. 3-204 to 209

Geo. E. Niles
 County Recorder.



of those parts of the

RANCHO

LA BALLONA

in
 LOS ANGELES COUNTY
 CALIFORNIA

which in the suit of John D. Young et al vs Ygnacio Machado et al N^o 965 of the register of actions were allotted to the Heirs of Agustin Machado dec'd by Decree of the District Court of the 1st Judicial District, Cal. of 14 December 1868

showing
 the partition of said lands made in the suit of Ramona S. de Machado vs Domingo Machado et al in the District Court of the 17 Judicial District, California by Geo. Hansen sole referee of partition, appointed by the decree of said District Court of October 11th 1875

For vacation por. Playa Street see M.R. 107-40.
 For Ballona Creek see C.S. 8194 Sht. 1 and 2

