

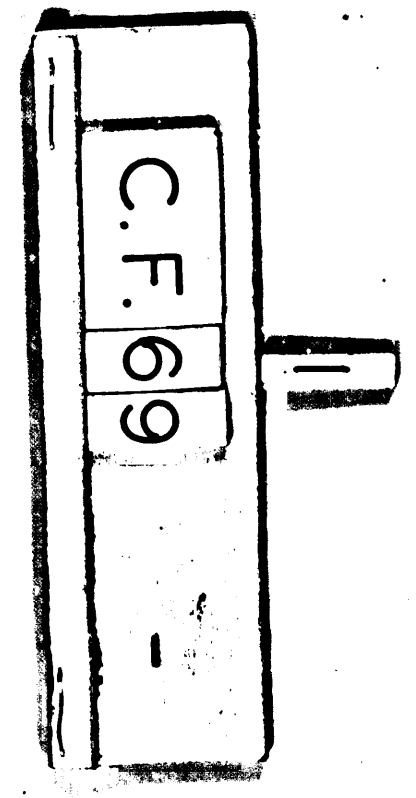
T. B. HAYES.

Part of the County of  
 in and for the County  
 Merchants Exchange Bank of  
 in this Suit do hereby  
 the division made  
 in the Decree in this case

County of Los Angeles  
 State of California

I the undersigned do hereby CERTIFY  
 the above to be a true and correct Map of the Exterior Bound-  
 ries and Subdivisions of a part of the SAN PEDRO RANCH in  
 the County and State aforesaid as surveyed and marked  
 by me in the Month of OCTOBER 1881.

T. B. Hayes  
 Surveyor.

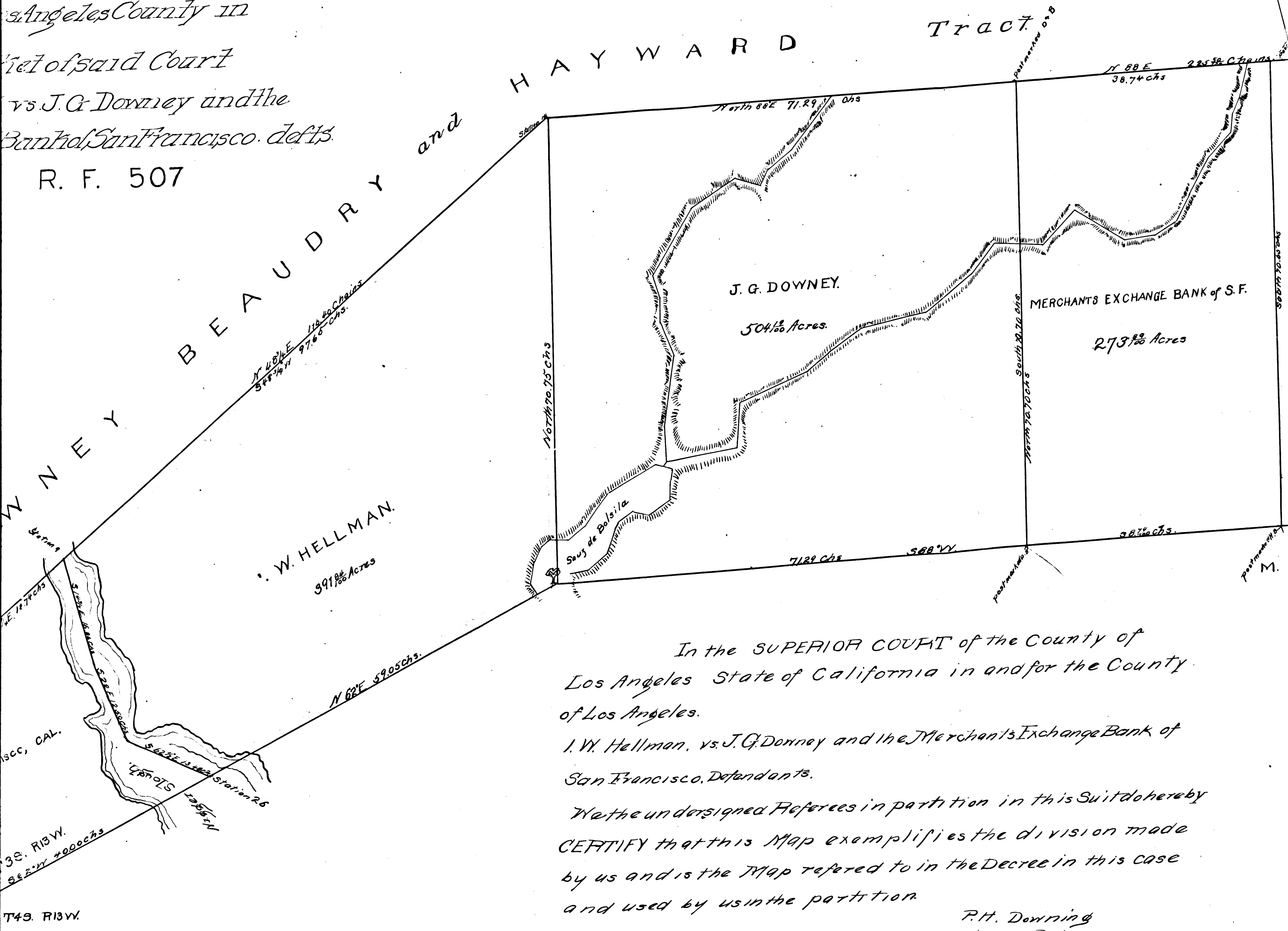


Scale: 10 Chains to one inch.

P.H. Downing  
 Thomas B. Hayes  
 Geo. Carson.

Wilmington & L. A. Rd. D. 36-21 O.P. 150  
 Division Blvd D 81-250, O.R. 1058-397  
 D 81-251, O.R. 10248-160

Map  
 to San Pedro  
 Angeles Cal  
 Surveyed by W. Moore.  
 Instructions of  
 Hayes and Geo Carson  
 appointed by order of the  
 of Los Angeles State  
 Angeles County in  
 of said Court  
 vs J.G. Downey and the  
 Bank of San Francisco. depts.  
 R. F. 507



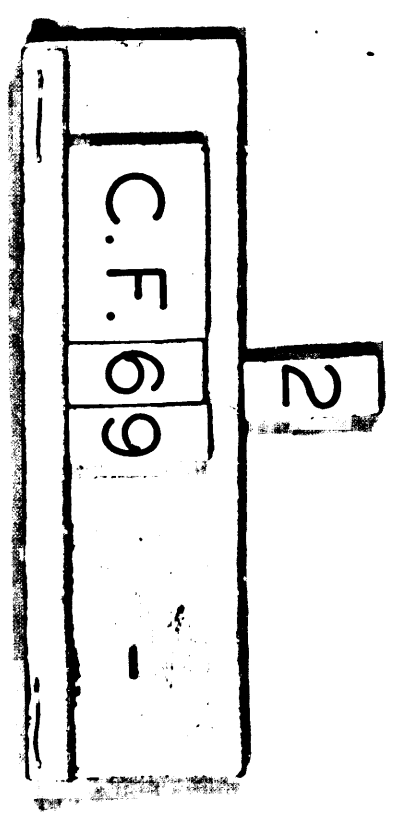
In the SUPERIOR COURT of the County of  
 Los Angeles State of California in and for the County  
 of Los Angeles.

I. W. Hellman, vs. J. G. Downey and the Merchants Exchange Bank of  
 San Francisco, Defendants.

We the undersigned Referees in partition in this Suit do hereby  
 CERTIFY that this Map exemplifies the division made  
 by us and is the Map referred to in the Decree in this case  
 and used by us in the partition.

P. H. Downing  
 Thomas B. Hayes  
 Geo. Carson.

For of J. G. Downey 504 1/2 Ac. for Wilmington & L. Ard D 3A-71 O P 159 A-1-6  
 Avalon Blvd D 81-250, O R 10, 58-397  
 D 81-251, O R 10248-160



# Map

of a

Part of Rancho San Pedro

Los Angeles Cal

Surveyed by W. Moore.

under instructions of

P. H. Downing, T. R. Hayes and Geo. Carson

Referees in Partition appointed by order of the

Superior Court of the County of Los Angeles State

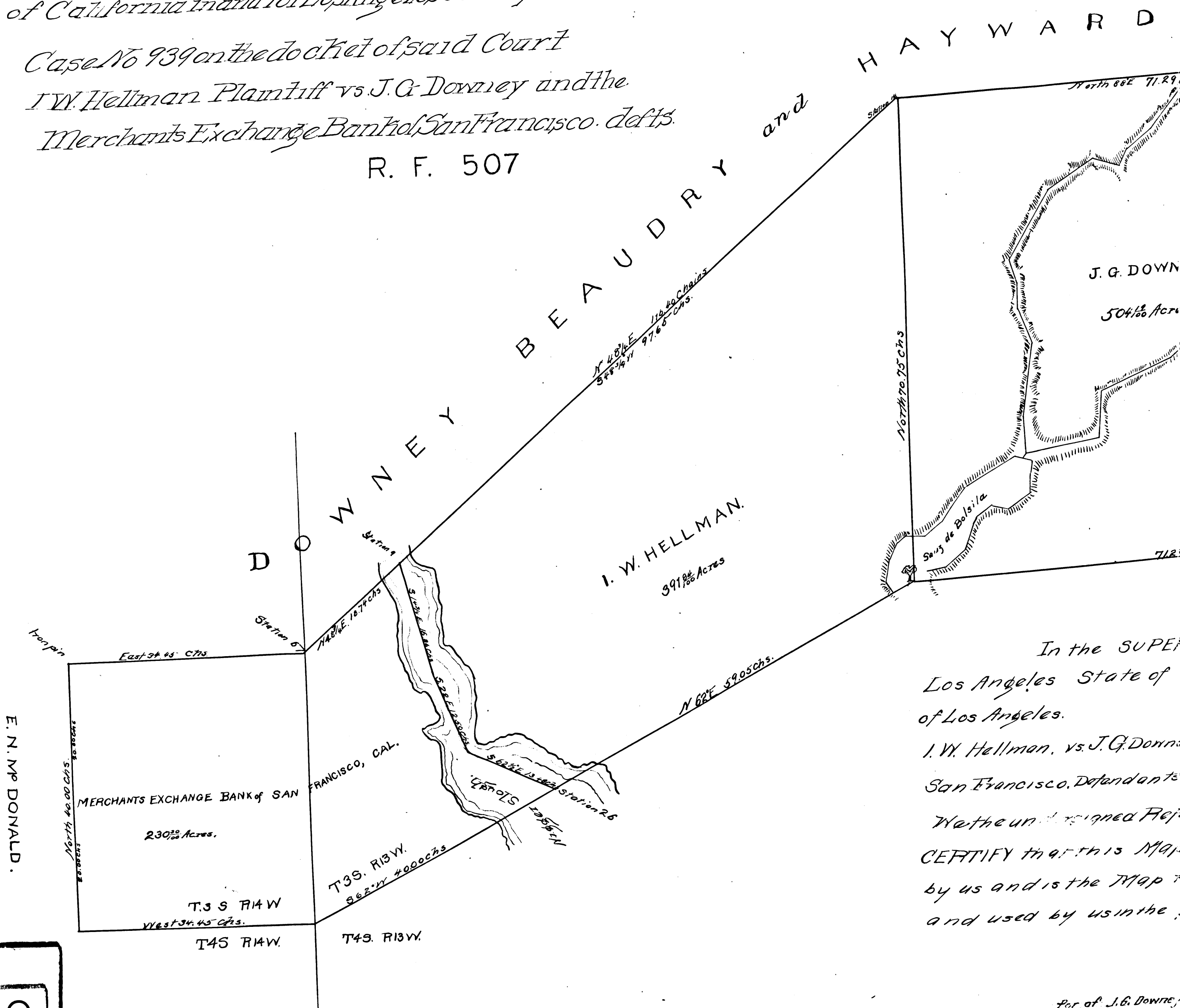
of California in and for Los Angeles County in

Case No 939 on the docket of said Court

I. W. Hellman Plaintiff vs J. G. Downey and the

Merchants Exchange Bank of San Francisco. Defts.

R. F. 507



In the SUPERIOR COURT  
of Los Angeles State of  
of Los Angeles.  
I. W. Hellman, vs. J. G. Downey  
San Francisco, Defendants  
We the undersigned Referees  
CERTIFY that this Map  
by us and is the Map  
and used by us in the

For of J. G. Downey

C.F. 69  
3