

Exterior Boundaries	
No. Course	Chains
1 N 71°15' E	26.36
2 S 87°00' E	15.00
3 N 57°45' E	19.50
4 N 82°00' E	12.50
5 S 78°00' E	25.00
6 S 68°00' E	43.00
7 N 87°00' E	7.00
8 N 69°00' E	13.00
9 N 82°00' E	18.00
10 S 78°45' E	20.63
11 S 63°00' E	41.00
12 S 68°30' E	27.00
13 S 58°30' E	15.00
14 S 60°45' E	12.00
15 S 54°30' E	33.00
16 S 59°30' E	29.70
17 N 22°46' E	190.00
18 N 77°43' W	481.20
19 S 15°45' E	70.90
20 S 12°15' E	27.15
21 S 22°52' E	90.93
22 S 15°45' E	26.90

Table of Allotments						
Names	No. 1 acres	No. 2 acres	No. 3 acres	No. 4 acres	Error acres	Total acres
R. S. Baker et al	2107.84					2107.84
Francisca M de Rios	10.33	247.60	0.44		0.61	258.98
Manuel Marquez	18.82	831.13	0.53		0.02	852.50
Ramona M de Baker	11.21	355.01	0.64		0.87	367.73
Pascual Marquez	40.62	2.34	1233.21		3.01	1279.18
Bonifacio Marquez	2.85	1848.01	0.54	1.67	4.35	1857.42
Road No. 1 Avenue						1.35
Total						6730.86

Allotment No 1 to R. S. Baker et al	
No. Course	Chains
1 N 22° 46' E	190.00
2 N 77° 43' W	179.58
3 South	154.82
4 S 63° 00' E	1.60
5 S 68° 30' E	27.00
6 S 58° 30' E	15.00
7 S 60° 45' E	3.06
8 N 74° 04' E	2.68
9 N 12° 10' W	3.80
10 N 26° 24' E	14.01
11 N 47° 05' E	5.43
12 N 16° 24' E	7.30
13 N 30° 43' W	15.25
14 N 13° 58' E	3.90
15 N 42° 21' W	3.68
16 N 80° 47' W	4.12
17 N 39° 57' W	1.05
18 N 8° 51' E	26.07
19 N 77° 16' W	1.66
20 N 17° 12' E	7.24
21 S 45° 50' E	50.90
22 S 16° 20' E	2.42
23 S 15° 23' W	10.45
24 S 39° 45' E	5.74
25 S 20° 56' W	4.06
26 N 77° 35' W	5.13
27 S 14° 55' W	12.66
28 S 30° 22' E	7.05
29 S 57° 55' E	4.83
30 S 38° 34' E	2.55
31 S 39° 08' E	2.38
32 S 27° 28' E	2.30
33 S 51° 02' W	3.32
34 S 46° 40' W	7.78
35 S 36° 54' E	2.92
36 N 53° 06' E	2.24
37 N 44° 16' E	8.64
38 S 86° 00' E	4.07
39 S 4° 19' E	3.62
40 S 74° 02' W	0.71
41 S 60° 38' W	3.81
42 S 45° 44' E	1.54
43 S 52° 24' W	6.90
44 N 36° 16' W	1.99
45 S 53° 40' W	7.33
46 S 54° 30' E	2.28
47 S 59° 30' E	29.70

Allotment No 1 to Ramona M de Baker	
No. Course	Chains
1 S 68° 45' E	15.80
2 N 25° 13' E	5.42
3 N 49° 07' W	13.20
4 S 42° 15' W	10.52

Allotment No 2 to Ramona M de Baker	
No. Course	Chains
1 North	90.10
2 West	40.10
3 South	32.00
4 N 69° 00' E	...
5 N 82° 00' E	18.00
6 S 78° 45' E	15.98

Allotment No 3 to Ramona M de Baker	
No. Course	Chains
1 S 4° 19' E	3.27
2 S 60° 38' W	1.22
3 N 20° 51' W	4.29
4 S 86° 00' E	2.34

Allotment No 1 to Pascual Marquez	
No. Course	Chains
1 S 44° 22' E	16.25
2 N 39° 18' E	6.76
3 N 35° 48' E	3.45
4 N 24° 26' E	9.15
5 N 16° 33' E	8.28
6 N 80° 33' W	19.91
7 S 14° 45' W	16.50

Allotment No 2 to Pascual Marquez	
No. Course	Chains
1 N 53° 06' E	7.56
2 N 36° 54' W	2.92
3 S 53° 12' W	8.45
4 S 54° 30' E	3.07

Allotment No 3 to Pascual Marquez	
No. Course	Chains
1 North	155.79
2 N 77° 43' W	82.26
3 South	126.60
4 S 24° 15' E	33.55
5 S 78° 00' E	13.94
6 S 68° 00' E	43.00
7 N 87° 00' E	7.00
8 N 69° 00' E	6.15

Allotment No 1 to Bonifacio Marquez	
No. Course	Chains
1 S 36° 16' E	4.65
2 N 52° 24' E	5.36
3 N 45° 44' W	4.61
4 S 44° 16' W	1.48

Street running through above allotment	
No. Course	Chains
1 N 53° 40' E	3.55
2 N 55° 44' E	0.51
3 N 60° 38' E	2.57
4 S 45° 44' E	0.51
5 S 60° 38' W	2.60
6 S 55° 44' W	0.51
7 S 53° 40' W	3.57
8 N 36° 16' W	0.50

Allotment No 2 to Bonifacio Marquez	
No. Course	Chains
1 N 71° 15' E	26.36
2 S 78° 00' E	15.00
3 N 57° 45' E	19.50
4 N 82° 00' E	12.50
5 S 78° 00' E	11.16
6 N 24° 15' W	33.55
7 North	126.60
8 N 77° 43' W	137.35
9 S 15° 45' E	70.90
10 S 12° 15' E	27.15
11 S 22° 52' E	90.93
12 S 15° 45' E	26.90

Allotment No 3 to Bonifacio Marquez	
No. Course	Chains
1 S 45° 44' E	3.75
2 S 60° 38' W	1.58
3 N 45° 44' W	3.31
4 N 44° 16' E	1.33

Allotment No 4 to Bonifacio Marquez	
No. Course	Chains
1 S 54° 30' E	2.20
2 N 53° 40' E	7.52
3 N 36° 16' W	2.16
4 S 53° 06' W	8.22

Allotment No 1 to Francisca M de Rios	
No. Course	Chains
1 S 80° 00' E	16.75
2 N 10° 53' E	4.80
3 N 68° 45' W	15.80
4 S 19° 30' W	8.00

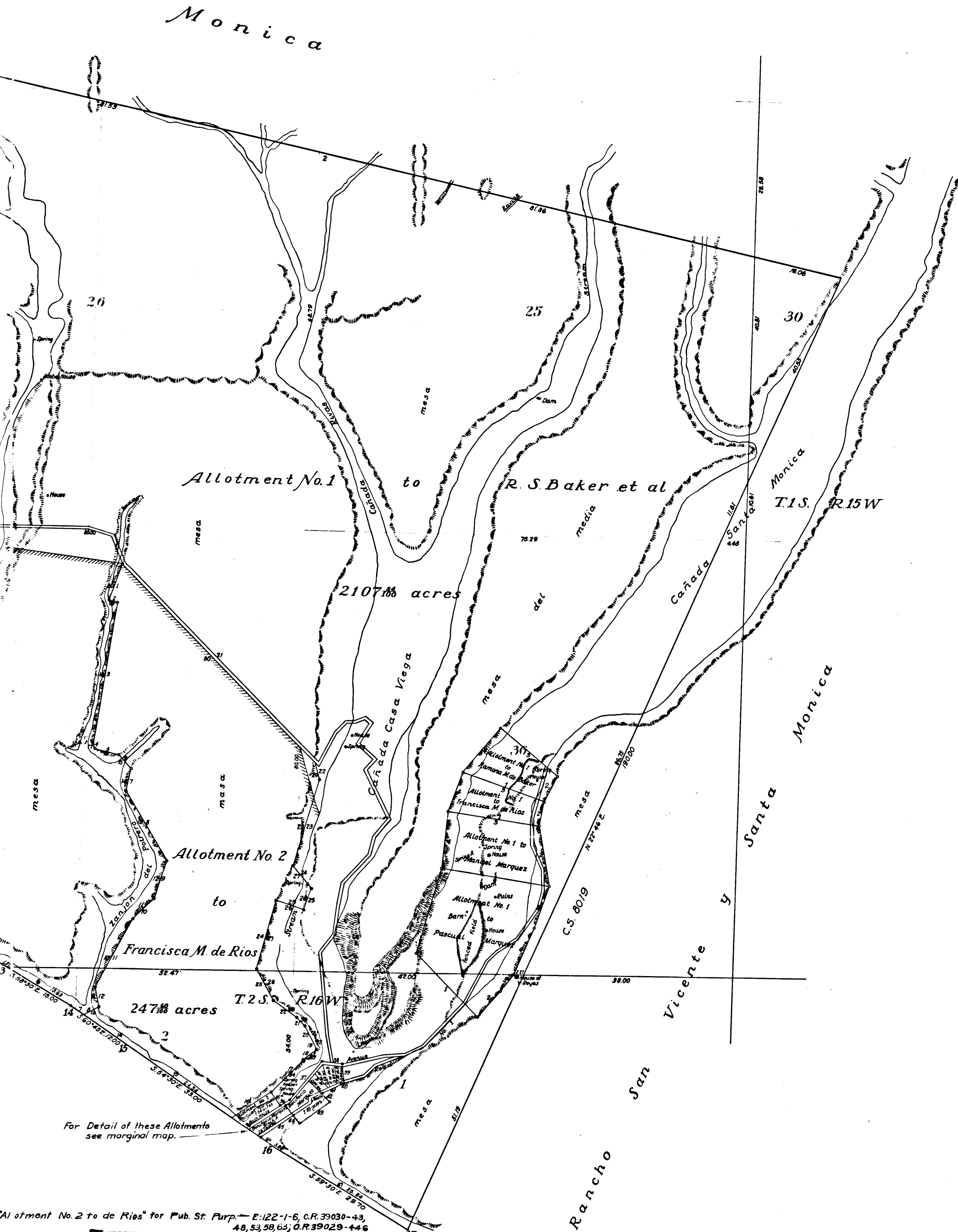
Allotment No 2 to Francisca M de Rios	
No. Course	Chains
1 S 17° 12' W	7.24
2 S 77° 16' E	1.66
3 S 8° 51' W	26.07
4 S 39° 57' E	1.05
5 S 80° 47' E	4.12
6 S 42° 21' E	3.68
7 S 15° 58' W	3.90
8 S 30° 43' W	15.25
9 S 16° 24' W	7.30
10 S 47° 05' W	5.43
11 S 26° 24' W	14.01
12 S 12° 10' E	3.80
13 S 74° 04' W	2.68
14 S 60° 45' E	8.94
15 S 54° 30' E	24.34
16 N 53° 12' E	8.45
17 N 46° 40' E	7.78
18 N 51° 02' E	3.32
19 N 22° 28' W	2.30
20 N 39° 08' W	2.38
21 N 38° 34' W	2.55
22 N 57° 55' W	4.83
23 N 30° 22' W	7.05
24 N 14° 55' E	12.66
25 S 77° 35' E	5.13
26 N 20° 56' E	4.06
27 N 39° 45' W	5.74
28 N 15° 23' E	16.45
29 N 16° 20' W	2.42
30 N 45° 20' W	50.90

Allotment No 3 to Francisca M de Rios	
No. Course	Chains
1 S 4° 19' E	2.54
2 S 74° 02' W	0.75
3 S 60° 38' W	0.88
4 N 47° 19' W	3.27
5 S 86° 00' E	1.55

Allotment No 1 to Manuel Marquez	
No. Course	Chains
1 S 80° 38' E	19.91
2 N 10° 45' W	10.88
3 N 80° 00' W	16.75
4 S 6° 00' W	10.37

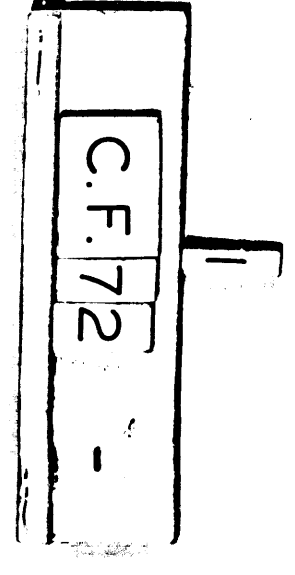
Allotment No 2 to Manuel Marquez	
No. Course	Chains
1 North	154.82
2 N 77° 43' W	82.01
3 South	63.58
4 East	40.00
5 South	90.10
6 S 78° 45' E	4.65
7 S 63° 00' E	39.40

Allotment No 3 to Manuel Marquez	
No. Course	Chains
1 S 20° 51' E	4.29
2 S 60° 38' W	0.48
3 N 45° 44' W	3.75
4 N 44° 16' E	2.29



Allotment No. 2 to de Rios for Pub. St. Purp. - E. 122-1-6, C.R. 39030-43, 48, 53, 59, 63; G.R. 39029-44, 6

For vac. certain Roads see D. 12-142, R.B. 13-276
For Malibu Rd. see C.S. 8036





C.F. 72
2

We the undersigned Referees in partition of the Rancho Boca de Santa Monica hereby certify this to be the true and original map referred to in our report of said partition which is herewith returned as a part of our proceedings in said partition.

Frank Sabichi
L. D. Gavitt
H. M. Mitchell

For Detail of this see margin
For Allotment No. 2 to de Ries

Rancho San

MAP
of the
RANCHO BOCA DE SANTA MONICA

situated in
LOS ANGELES COUNTY, CAL. Boundaries & Triangulations see C.S. 5355

Surveyed and Partitioned under the instructions of
the Referees in Partition, appointed by the Superior
Court of the County of Los Angeles, State of California,
in the Case No 2405 on the Docket, and in conformity
with the instructions of said Superior Court.

Containing 6730 ¹¹/₁₆ acres of land
Variation 14'15" to 15'00" East.
Scale, 10 chains per inch.

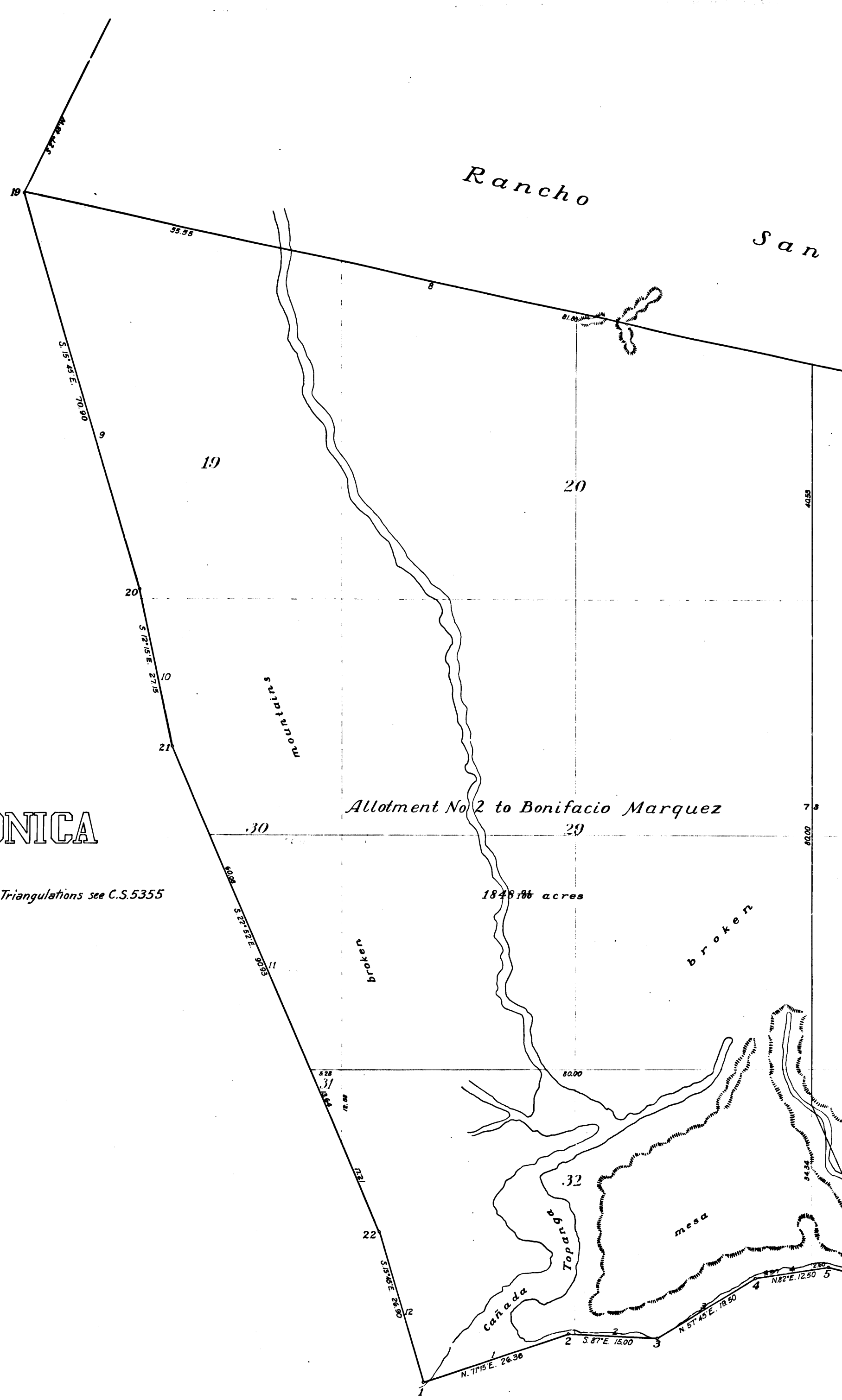
W. P. Reynolds, Surveyor
A. G. Ruxton, Draughtsman.

Note: This case was commenced in the District Court
and transferred to the Superior Court when same was est-
ablished in this County. All papers are filed under District
Court Case No. 2405 in the Clerk's Office.

County Surveyor
Mar. 27, 1916

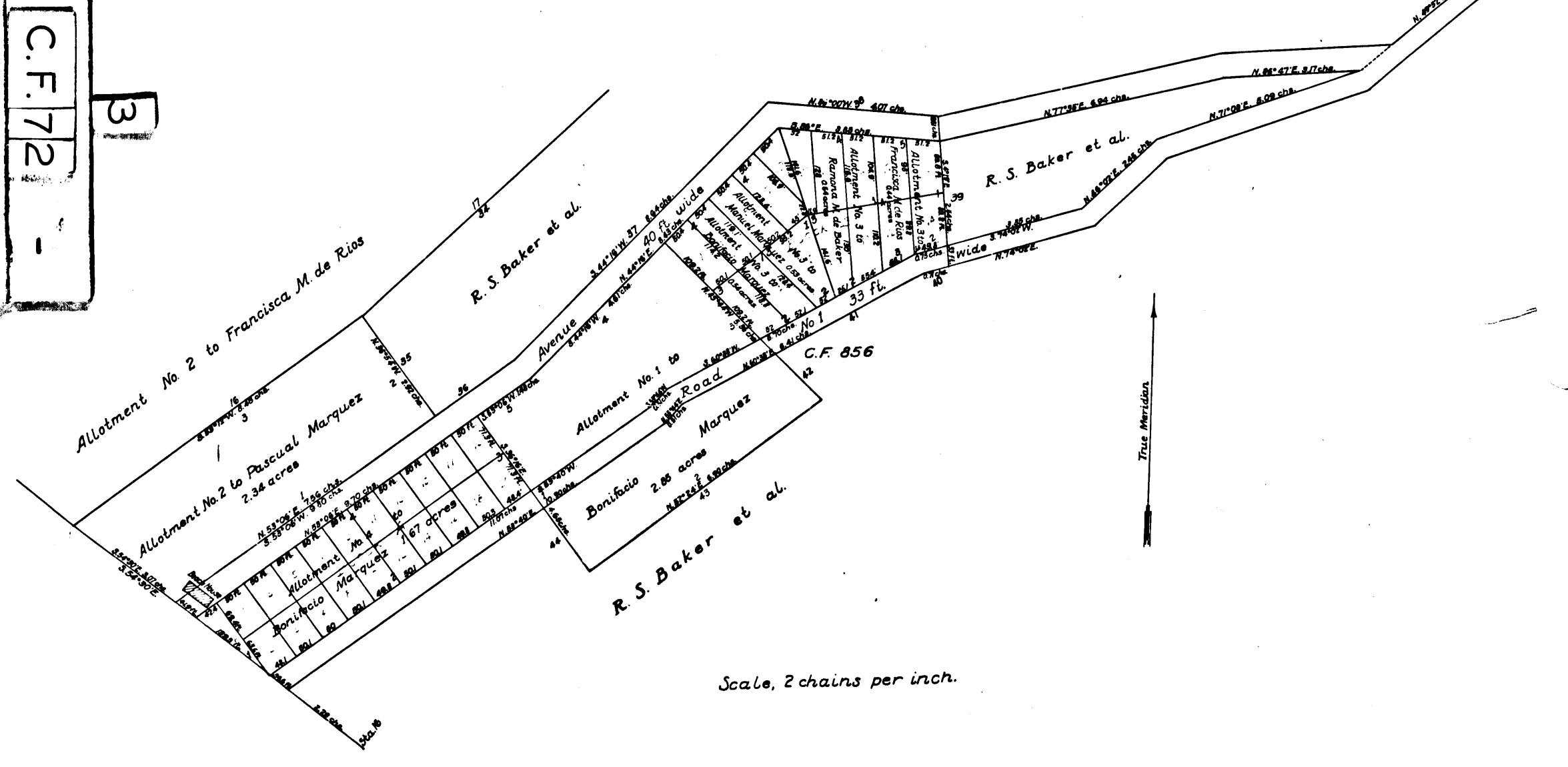
Traced from original June 1935 by R. F. Steen.
Checked by *[Signature]*

NEG. 668



C.F. 72
3

Plot of portion of Rancho Boca de Santa Monica,
showing Lots in Blocks A and B



Scale, 2 chains per inch.