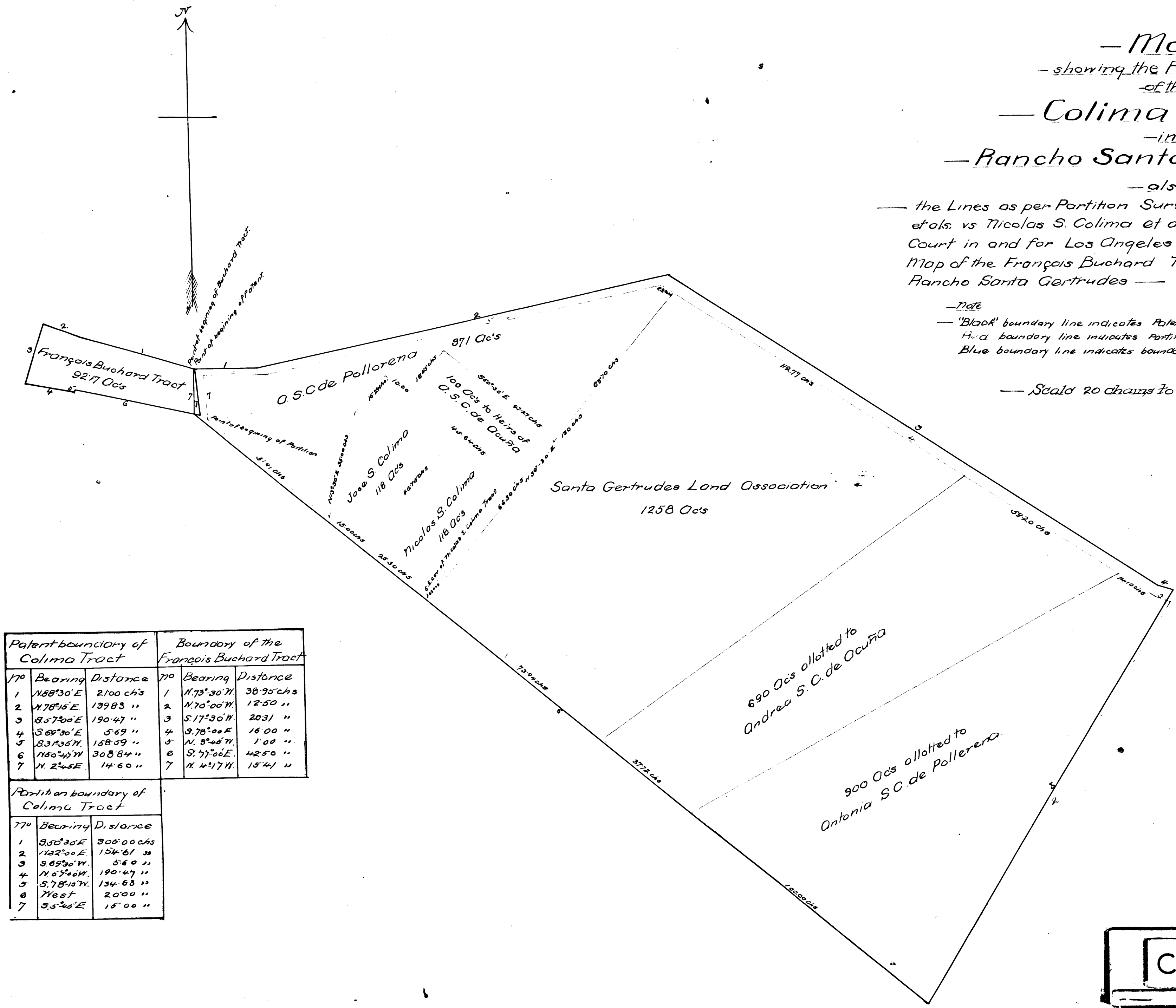


— Map —  
 — showing the Patent Lines —  
 — of the —  
**— Colima Tract —**  
 — in —  
**— Rancho Santa Gertrudes —**  
 — also —

— the Lines as per Partition Survey in Case 17<sup>o</sup> of E. Ocuña et als. vs Nicolas S. Colima et als. In the 17<sup>th</sup> Judicial District Court in and for Los Angeles County California, also the Map of the François Buchard Tract, being a portion of said Rancho Santa Gertrudes —

— Note —  
 — "Black" boundary line indicates Patent boundary of Colima Tract.  
 — Red boundary line indicates Partition boundary of Colima Tract.  
 — Blue boundary line indicates boundary of François Buchard Tract. —

— Scale 20 chains to one inch. —



Patent boundary of Colima Tract			Boundary of the François Buchard Tract		
No	Bearing	Distance	No	Bearing	Distance
1	N 68° 30' E	2100 chs	1	N 73° 30' W	38.95 chs
2	N 76° 15' E	13983 "	2	N 70° 00' W	12.50 "
3	S 57° 30' E	190.47 "	3	S 17° 30' W	2031 "
4	S 67° 30' E	5.69 "	4	S 78° 00' E	16.00 "
5	S 31° 35' W	158.59 "	5	N 3° 45' W	1.00 "
6	N 50° 45' W	308.84 "	6	S 77° 00' E	4250 "
7	N 2° 45' E	14.60 "	7	N 42° 17' W	15.41 "

Partition boundary of Colima Tract		
No	Bearing	Distance
1	S 35° 30' E	305.00 chs
2	N 32° 00' E	154.61 "
3	S 69° 30' W	5.60 "
4	N 67° 45' W	190.47 "
5	S 78° 00' W	134.53 "
6	West	2000 "
7	S 3° 30' E	15.00 "

(Endorsed on back)  
 4367  
 Bouchard  
 vs  
 Heilner et al.  
 Def. Ex. No 3  
 Filed June 3, 1886.  
 Chas. H. Dunsmoor, Clerk  
 By A.N. Hamilton, Deputy

C.F. 75