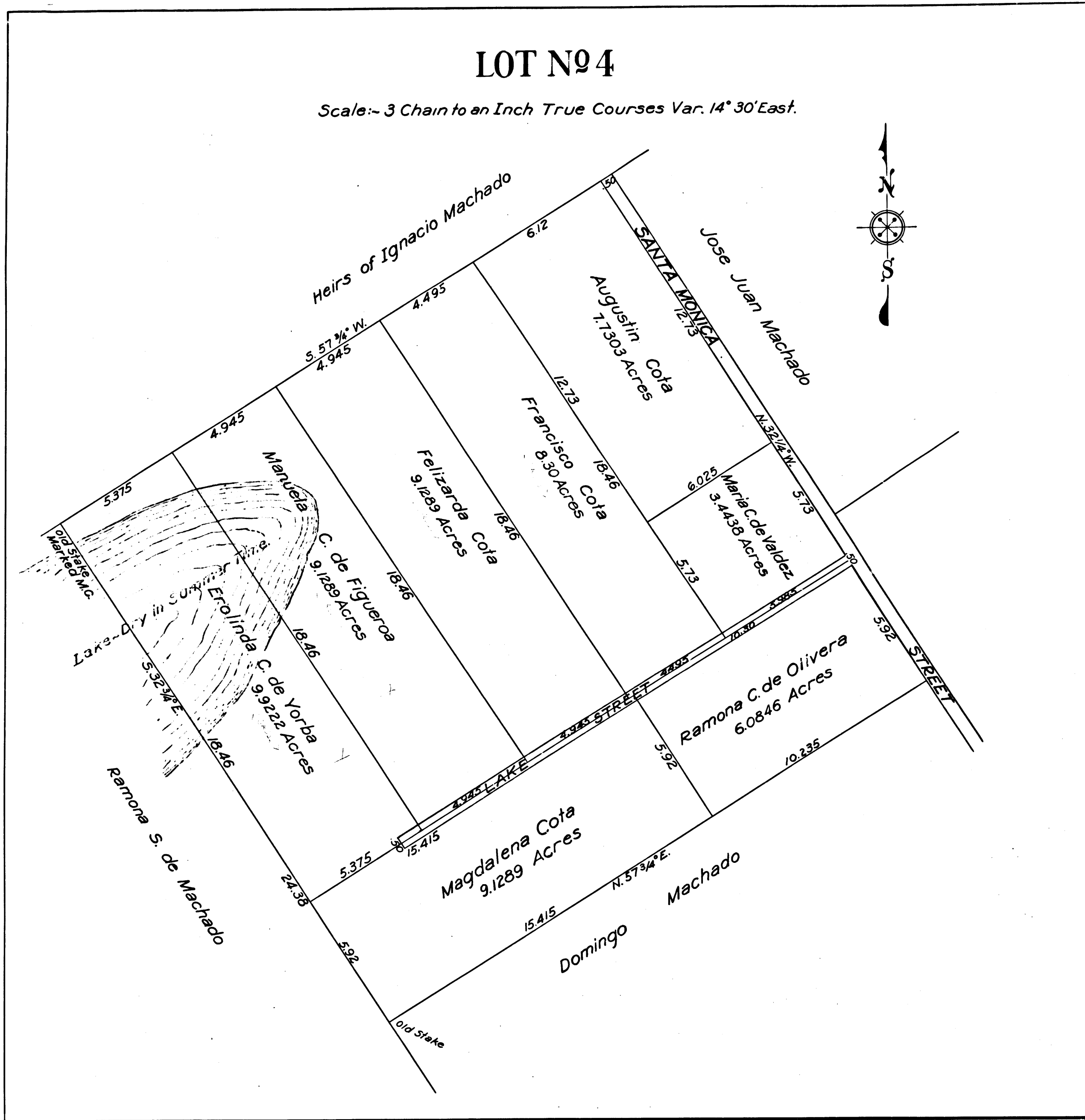


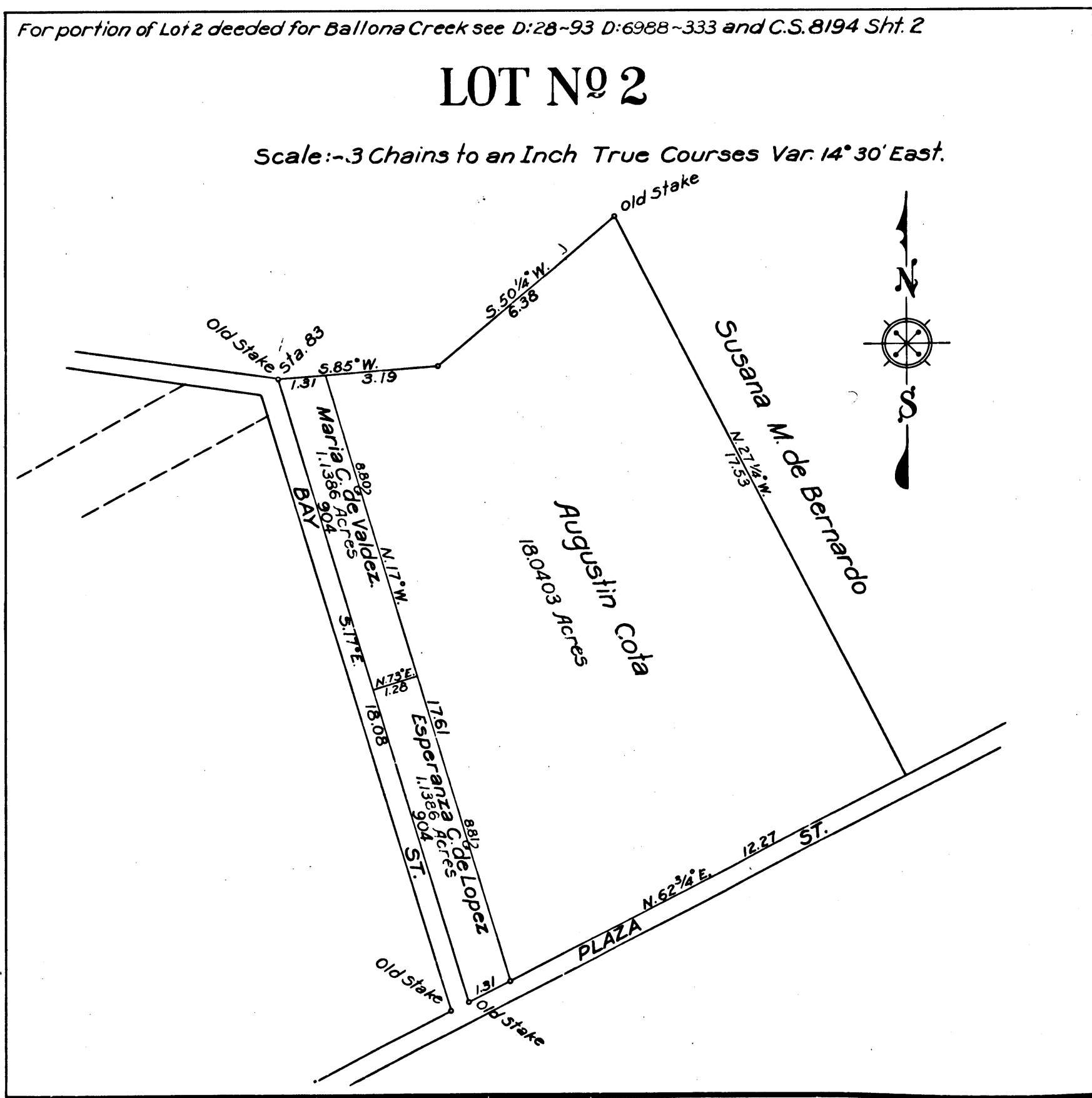
LOT N^o4

Scale: - 3 Chain to an Inch True Courses Var. 14° 30' East.

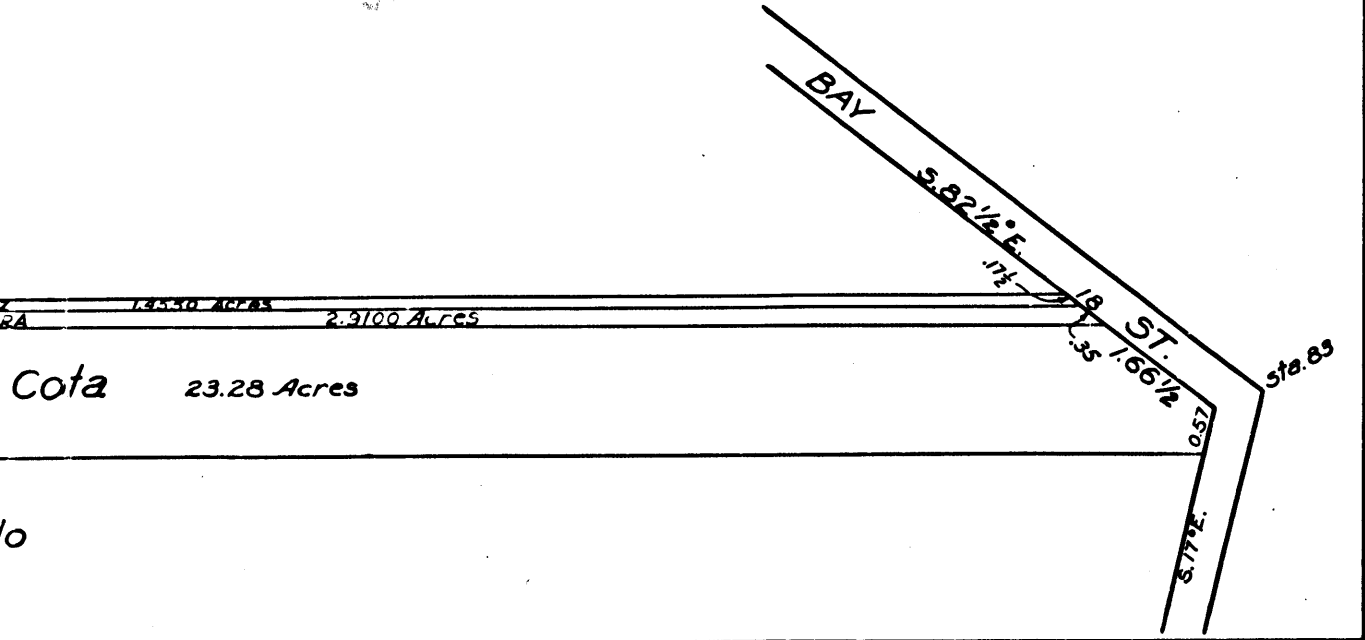


LOT N^o2

Scale: - 3 Chains to an Inch True Courses Var. 14° 30' East.

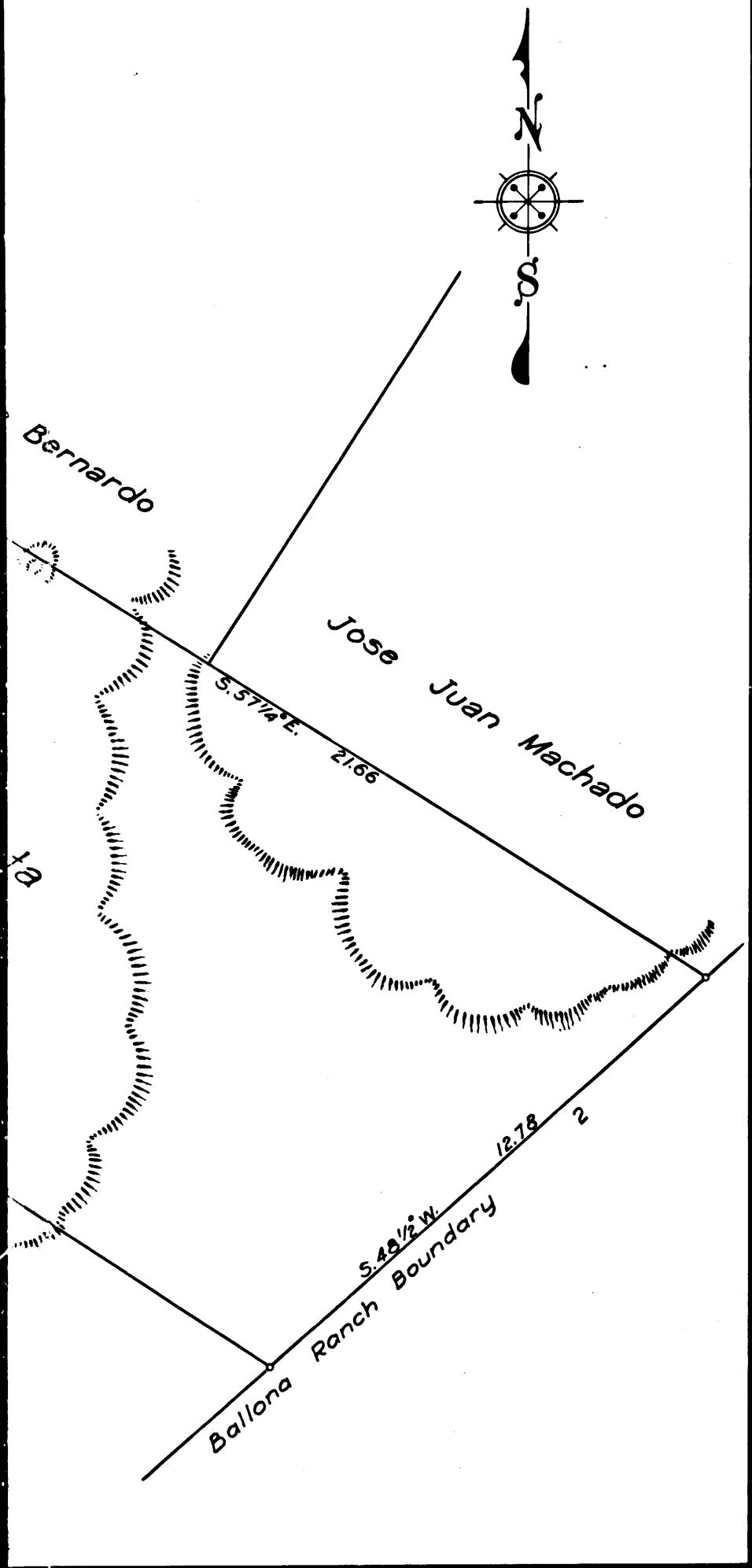


C.F. 78



93

True Courses Var. 14°30' East



MAP

Showing those parts of the RANCHO LA BALLONA

in the Suit of Augustin Cota vs. Erolinda C. de Yorba et al.
in the Superior Court of Los Angeles County,
State of California - Case No. 5630
according to the Allotment made by M. F. Coronel
appointed Sole Referee in the Decree of Partition
Surveyed in March A. D. 1887.

by J. A. Bernal Sur. & C.E.

For Copy of this Map see M.R. 17-77-79

NEG. 640

