



111 ACRE RANGE

20 ACRE RANGE

VERDES

RANGE 8

RANGE 7

RANGE 6

RANGE 5

First Standard Parallel South of San Bernardino Base Line  
T.5S., R.15W.

C.F. 80

Mrs. M. H. Banning  
97.30 Acres

Lucy T. Banning  
18.29 Acres

Mary H. Banning Jr.  
18.29 Acres

Wm. Banning  
6.32 Acres

15.04 Ac.

SEVENTH

SIXTH

FIFTH

FOURTH

THIRD

VILLIE

CANAL

REBECCA

E. ST.

VILES

BANNING

WILSON

DOWNEY

MCFARLAND

DOMINGUEZ

SANFORD

BRENT

CARSON

WATSON

END

First Standard Parallel South of San Bernardino Base Line  
T.5S., R.15W.

VERDES

PALOS

RANCHO

20 ACRE RANGE  
RANGE 8  
RANGE 7  
RANGE 6  
RANGE 5  
RANGE 4  
RANGE 3  
RANGE 2  
RANGE 1



Note: According to Final Decree in this Case allotments extend north to this line, excepting any portions thereof lying within the Town of Wilmington - D.M. 6-66 & 67. Co. Sur. 8/19/31

Survey No. 4 Location No. 57  
State Tide Lands

Wm. Banning  
55.34 Ac.

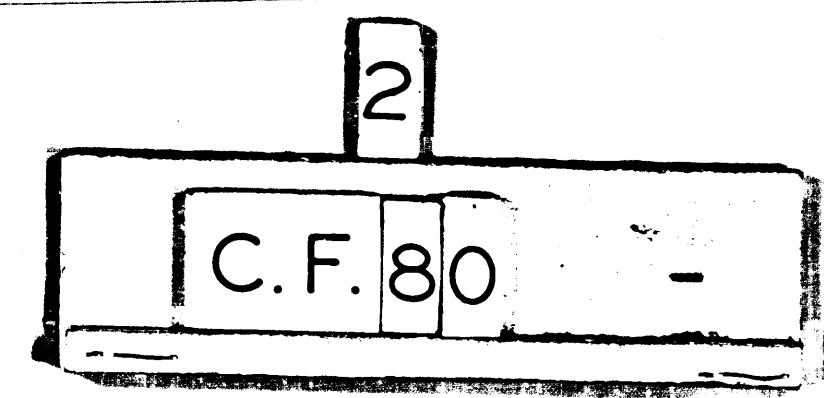
Wm. Banning  
153.21 Ac.

SPRR. DEPOT

GROUND'S

Willie St changed to Main St. D:9-221  
For widening of Canal St. see D:9-200-201-202-203-204-205-206  
For Street Name changes see Ord. 33239  
For Vac. of Government Alley, Dock St. Tide St. & Marine Ave. see Ord. 38548  
For Street Name Changes see Ord. 38813, 38814, 38815, 38816, 38817, 38818, 38850  
See opinion of L.A. City Atty for 2 public Sts. D:20-130  
For Vac. por. of Water St. see Ord. 38943  
For dedic. public alleys sly. from B St. betw. Broad and Lakme Aves.)  
" " " " " Canal - Broad " } Ord. 38996  
" " " " " A " " Canal - Marine " }  
For Vac. of streets see Ord. 38866; also M.R. 282-136 to 142  
For decl. and naming publ. streets and alleys see Ord. 39053  
Canal Ave. changed to Avalon Blvd. Ord. 55530  
For Lomita Blvd in Lots 9 to 12. see C.S.B- 680-1 (in III Acre Range)

B	Mrs. M.H. Banning
L	Lucy T. Banning
M	Mary H. Banning Jr.
H	H. Banning
J	J. B. Banning
W	Wm. Banning



# MAP

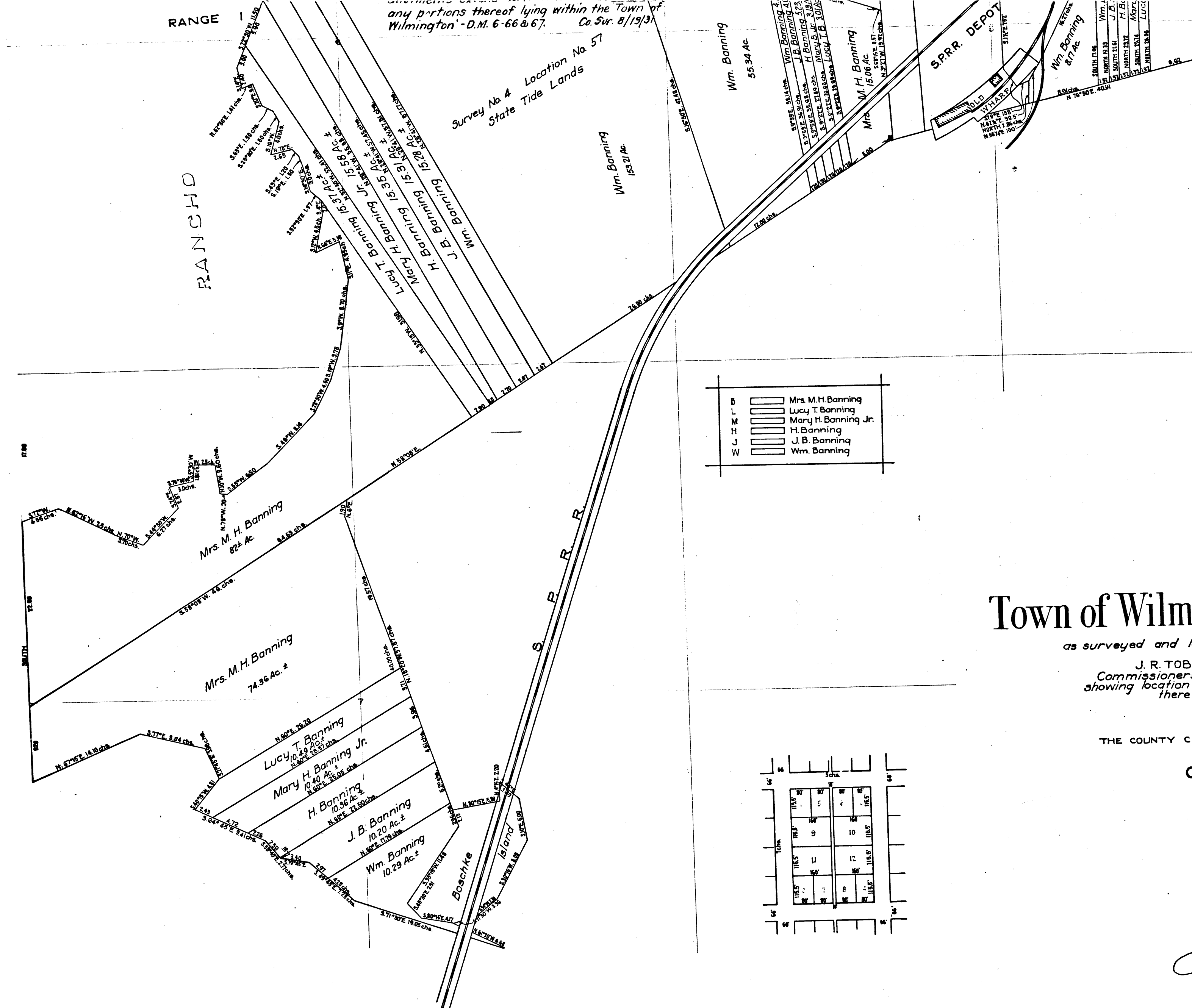
— of the —

## Town of Wilmington & adjacent tide land

as surveyed and located by W. B. Nicholson and R. N. Frick.  
at Request of  
J. R. TOBERMAN - C. T. HEALEY AND E. T. WRIGHT.  
Commissioners in Case No. 6395. Banning, Vs. Banning,  
showing location of property of the different parties in interest  
thereto as allotted by said commissioners.  
Located in 1890 and 1891.

Mrs. M. H. Banning  
82.4 Ac.

Mrs. M. H. Banning  
74.36 Ac. &



RANGE I

any portions thereof lying within the Town of Wilmington - D.M. 6-66 & 67. Co. Sur. 8/19/31

Survey No. 4 Location No. 57 State Tide Lands

B	▬	Mrs. M.H. Banning
L	▬	Lucy T. Banning
M	▬	Mary H. Banning Jr.
H	▬	H. Banning
J	▬	J. B. Banning
W	▬	Wm. Banning

Willie St changed to Main St. D:9-221  
 For widening of Canal St. See D:9-200-201-202 203-204-205-206  
 For Street Name changes see Ord. 33239  
 For Vac. of Government Alley, Dock St Tide St. & Marine Ave. see Ord. 38548  
 For Street Name Changes see Ord. 38313, 38814, 38815, 38816, 38817, 38818, 38850  
 See opinion of L.A. City Art'y for Public Sts. D:20-130  
 For Vac. por. of Water St. see Ord. 38943  
 For dedic. public alleys sly. to St. betw. Broad and Lakme Aves. } Ord. 38996  
 " " " " " Canal " Broad " }  
 " " " " " nly. " Canal " Marine " }  
 For Vac. of streets see Ord. 38563, also M.R. 282-136 to 142  
 For decl. and naming publ. streets and alleys see Ord. 39 J53  
 Canal Ave. changed to Avalon Blvd. Ord. 55530  
 For Lomita Blvd in Lots 9 to 12 see C.S.B- 680-1 (in III Acre Range)

# MAP

- of the -

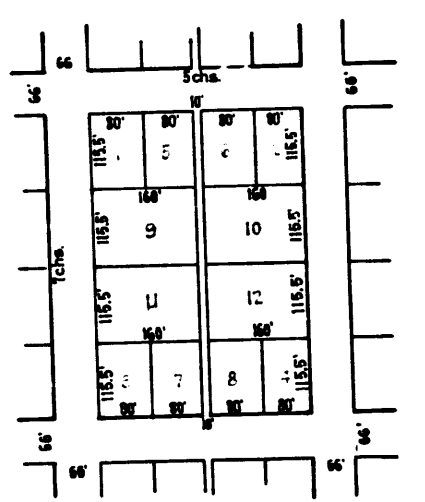
## Town of Wilmington & adjacent tide land

as surveyed and located by W. B. Nicholson and R. N. Frick.  
 at Request of  
 J. R. TOBERMAN - C. T. HEALEY AND E. T. WRIGHT.  
 Commissioners in Case No. 6395 Banning, Vs Banning.  
 showing location of property of the different parties in interest  
 thereto as allotted by said commissioners.  
 Located in 1890 and 1891  
 Scale - 8 chains to one inch.  
 THE COUNTY CLERK'S REFERENCE TO THE ORIGINAL OF THIS MAP IS  
 D - 6 - 181

CLERKS FILED MAP NO. 80

E. T. Wright  
 Charles T. Healey  
 J. R. Toberman

Commissioners



3  
 C.F. 80