

West Line
 17th St
 3rd St

90°

Figueroa
 Street

Street

Electric Light Mast
 N. Line
 Pico St.

To N.W. Cor. Stewart 1187.16
 Said to be N.W. Cor. of
 Lot 8. Block 37, Hancock's Sur

30 ft - 2 inch.

West Line

Cement Wall

angle in curb

7th

Pacific

Street
 Railway

Hitching Post

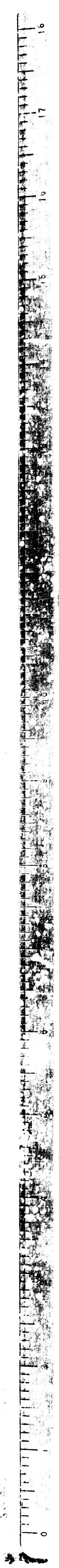
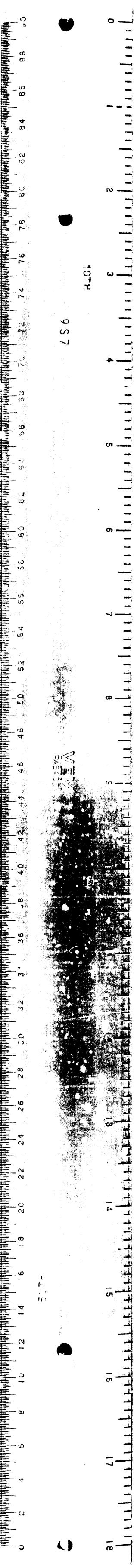
of

Crow's House

FIGUEROA ST. FROM S.E. Cor. Washington Tract to S.W. Cor. Figueroa & Pico STS.

C.F. 86

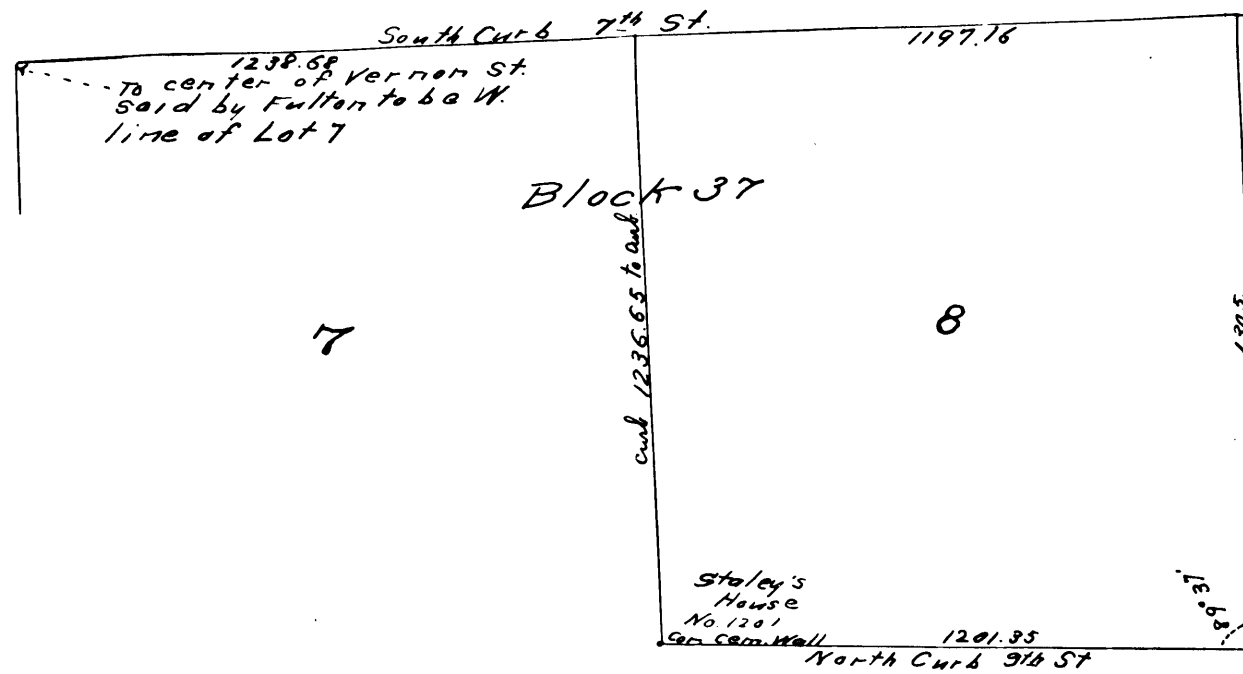
- Duplex -



10-14
9-57
200 ft. - 1 inch.

SE Corner of the
Washington Tract

West
Line



July 29-30, 1891.

See Note Book 97
Pages 3-10

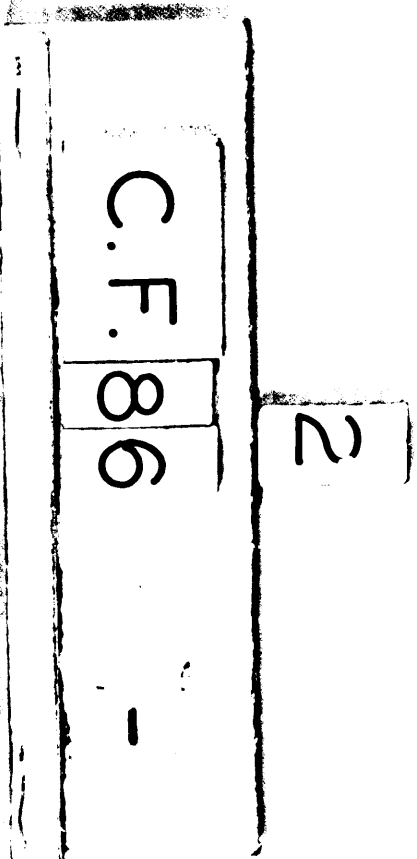
1420
West Line
1720
1130
1250
9th St
1200

1420
1720
1130
1250
9th St
1200

1420
1720
1130
1250
9th St
1200

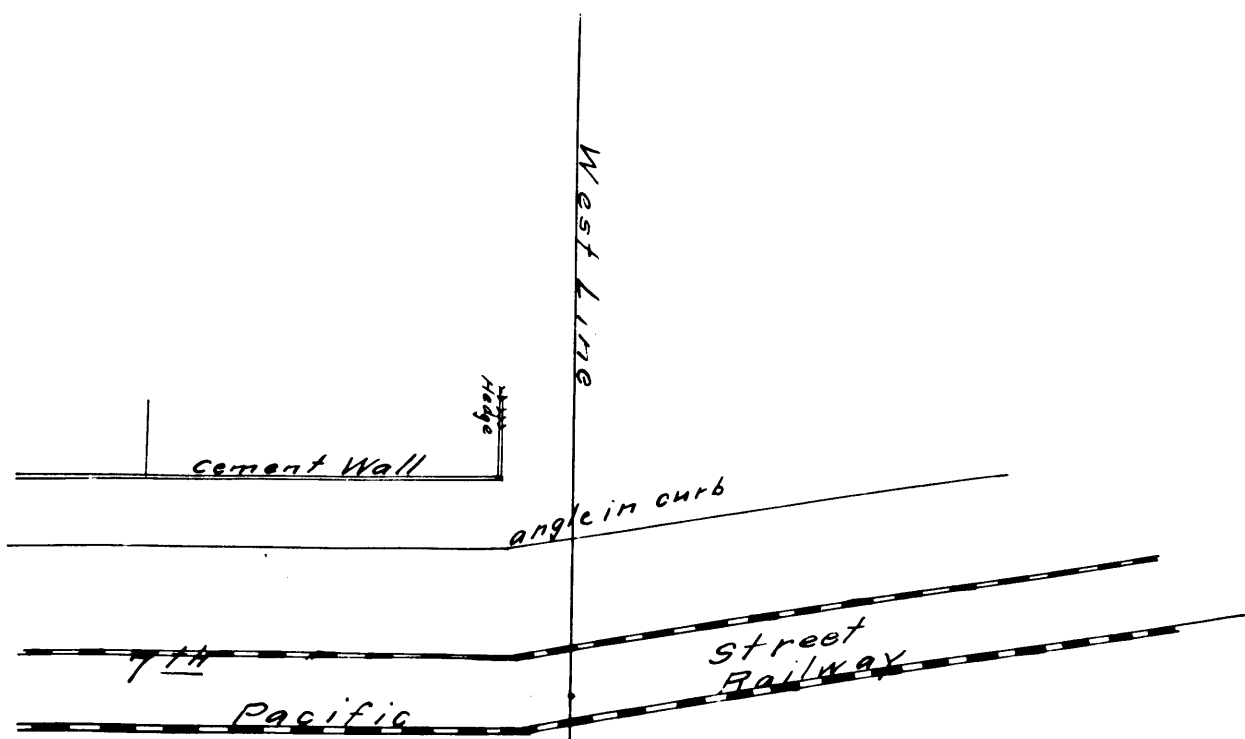
1420
1720
1130
1250
9th St
1200

1420
1720
1130
1250
9th St
1200



Figueroa

Street



← To N.W. Cor. Stewart 1197.16
Said to be N.W. Cor. of
Lot 8, Block 37, Hancock's Sur.

Hitching Post