

Map

SHOWING PARTITION OF THAT PORTION OF THE

RANCHO LA PUENTE

BELONGING TO THE

ESTATE OF ALBERT ROWLAND DECEASED

SCALE 6 CHAINS TO ONE INCH

SURVEYED NOVEMBER AND DECEMBER 1893 BY

TRUE COURSES

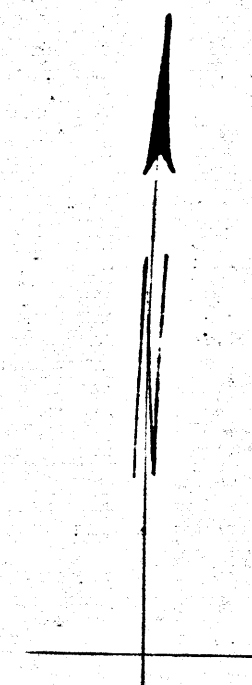
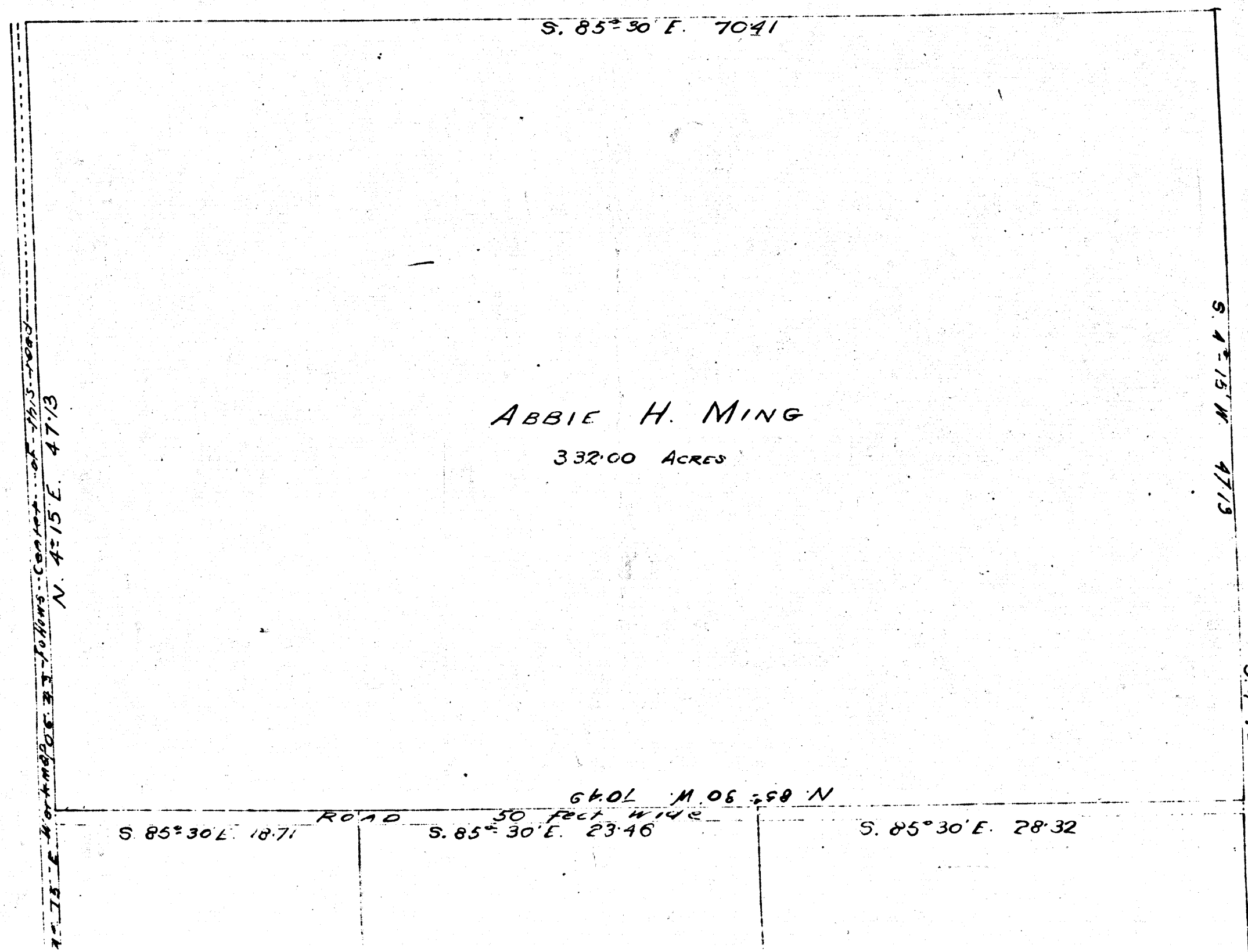
John E. Jackson

SURVEYOR

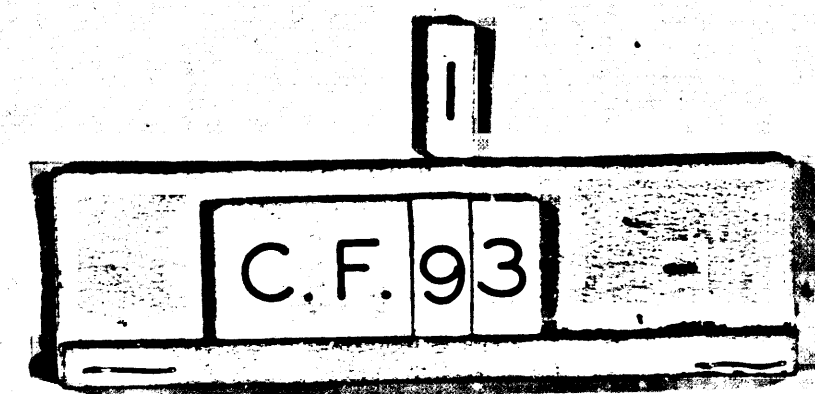
ALL DISTANCES ARE IN CHAINS

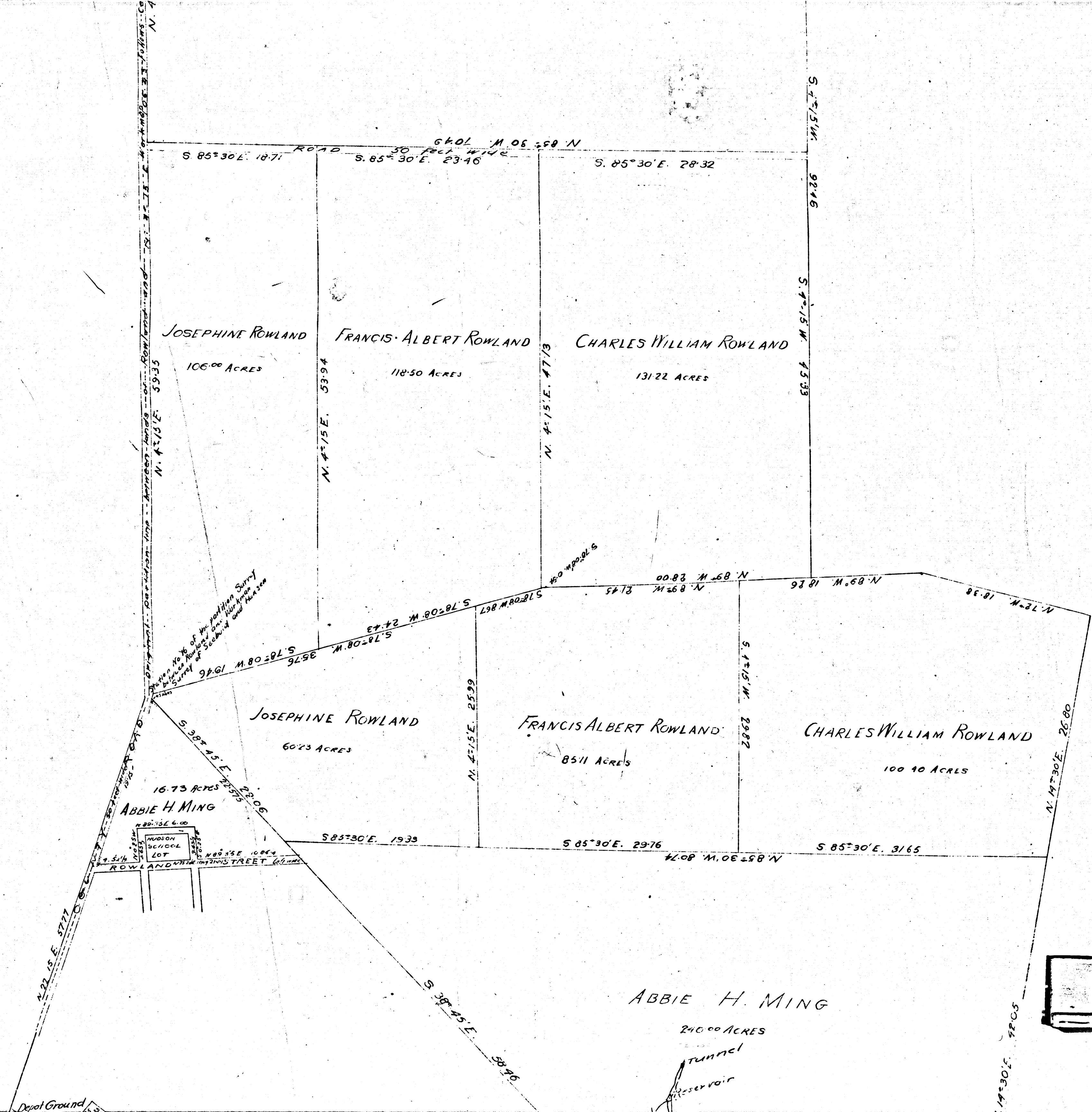
Note: Acreage and measurements of Josephine Rowland - 106.00 Acre Allotment, Francis Albert Rowland - 118.50 Acre Allotment, and Charles William Rowland - 131.22 Acre Allotment go to the north line of the road shown on the north side of said Allotments according to decree of distribution. (Co. Surveyor)

NEG. 688

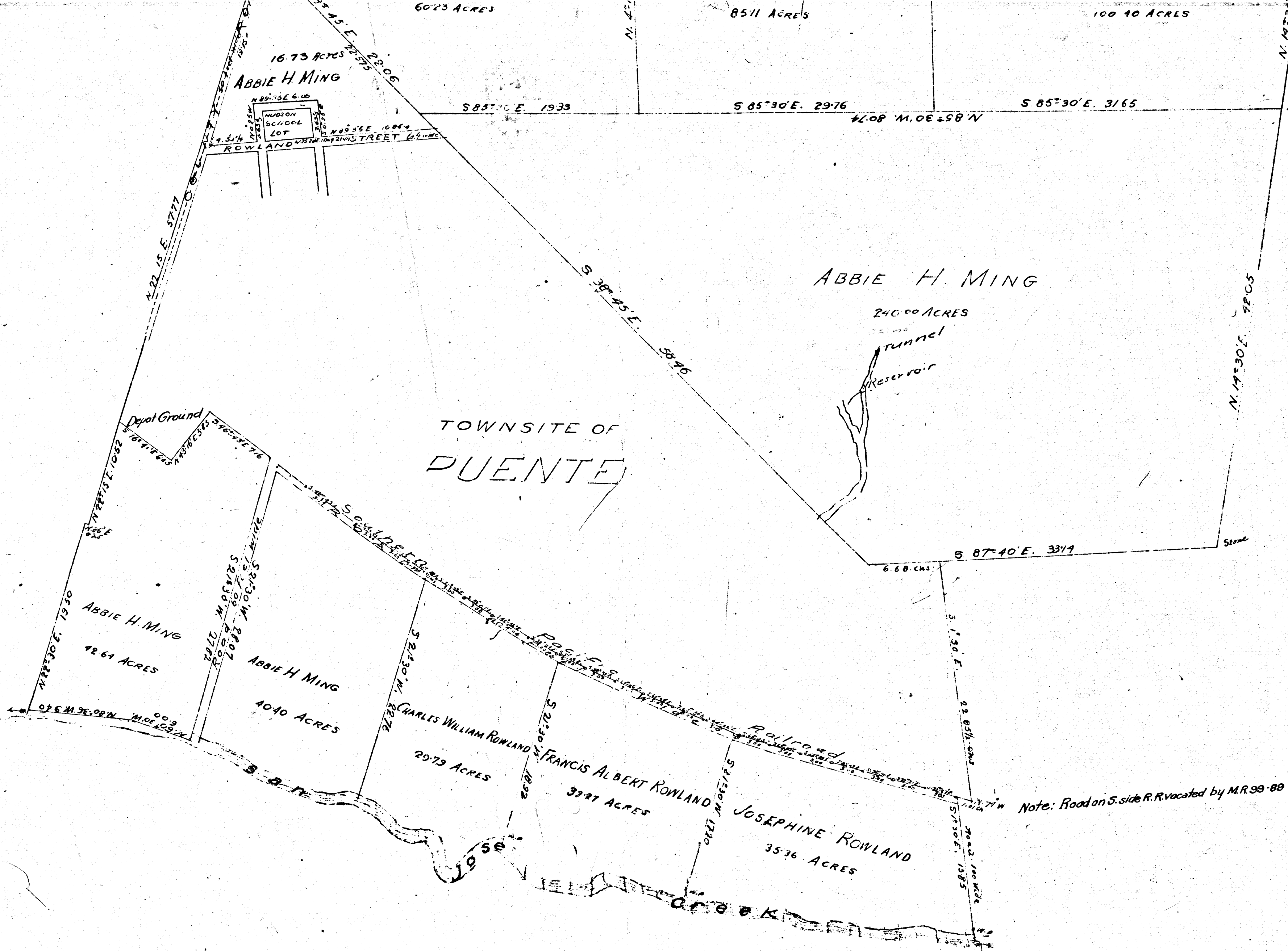


For Rancho La Puente to Hudson School Dist see 192-883 OR 501TA-314





2
C.F. 93



3

C.F. 93