

The part of this plat representing the tract of land conveyed November 6th 1854 by Y. M. Alvarado and Luisa Abila his wife to Emile Cuivilier and by the latter conveyed to Bishop Amat August 21st 1858, is copied from a plat of a survey made 13 Oct. 1854 by M^r White and approved by Henry Hancock County Surveyor. In said plat appears the following: "Ven. 12th 44' E. Courses from at: Corner on Main Street to S. E. Corner of Alexander and Main Streets at 34th E. Top of round house South of Brewery 345th 5th W. from N. E. Corner of large ococypira to S. E. Corner of M^r Dallas Brickhouse N. 16th 24' W. N. E. Corner of M^r Oildquist's fence N. 31th 30' W. S. W. Corner of Dallas Brickhouse N. 20th W. from S. E. Corner of Main Street to cross on church N. 34th E. Lot belonging to Amiel Cavellier Esq. fronting on E. Side of Main Street between 2nd and 3rd Streets containing 3.34894 acres "

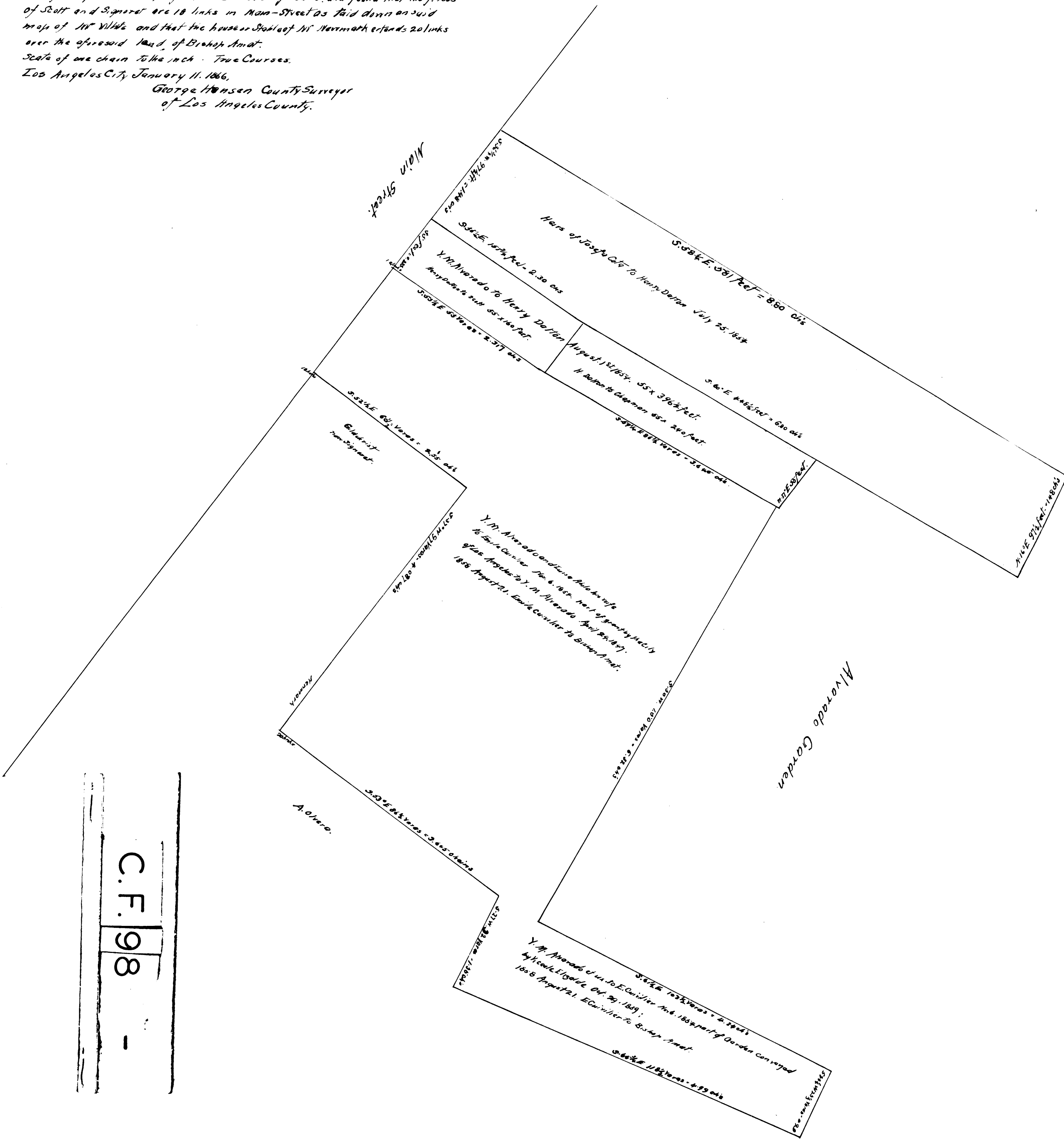
That part of this plat representing the tracts conveyed by the heirs of Josefa Cota to Henry Dalton July 25 1854 and the tract conveyed by Y. M. Alvarado to Henry Dalton on the 12th of August 1867, I have delineated in accordance with the descriptions of said conveyances.

1866 January. I reviewed for duty Amiel the Tracts conveyed to him by E. Cuivilier in conformity with the map of M^r White above referred to. and found that the fences of Scott and Sigaret are 18 links in Main Street as laid down on said map of M^r White and that the house at Southwest of M^r Henmark extends 20 links over the aforesaid road of Bishop Amat.

Scale of one chain to the inch. True Courses.

Los Angeles City, January 11, 1866.

George Hansen County Surveyor of Los Angeles County.



C.F. 98