

MAP of the FIRST CLASS LAND

situated north of and below the level of the irrigation ditch of the Rancho

RINCON DE LA BREA

in Los Angeles County, State of California

showing the subdivision made by the Commissioners of partition Scale of one inch to 3 chains True Courses. Var. 14°45' East

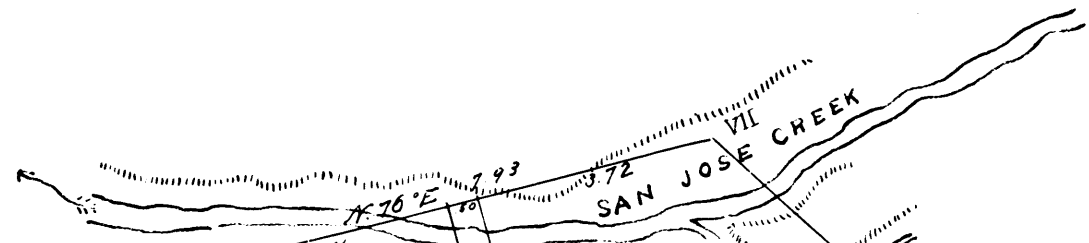
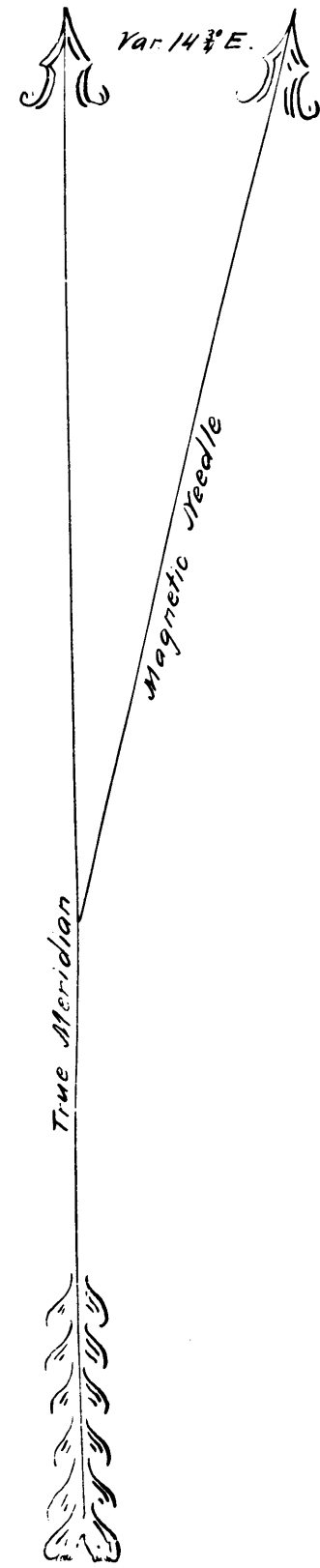
Boundary of 1st class land

St.	Courses	Distance	St.	Courses	Distances
1	S. 72 3/4° E	10.92	11	N. 36° E	2.62
2	S. 79 3/4° E	13.15	12	N. 31° E	2.77
3	N. 19 1/2° E	0.74	13	N. 66 1/2° E	4.33
4	N. 62° E	4.50	14	S. 88 1/2° E	6.13
5	S. 82° E	0.59	15	N. 77° E	0.70
6	N. 39 1/2° E	3.00	16	N. 83 1/2° E	2.00
7	N. 53° E	3.38	17	N. 48 1/2° W	43.25
8	N. 1 1/2° E	2.21		S. 76° W	7.93
9	N. 50 1/2° E	2.78		S. 14 1/2° W	43.00
10	N. 4 1/2° W	3.00			

Area 135.76 acres

Filed November 20, 1874
J.W. Potts, Clerk
By C.W. Gould, Deputy

Location of Vineyard St. D. AC-155 O.R. 9069 302
For F.M. Zarrabano 14,301 acs for Water St. D 55 117, 02 1034 170
" Courses 14 301 Acs
" M. Menchedo 14 301 Acs
" M.L.A.F. Burrows 16 525 Acs



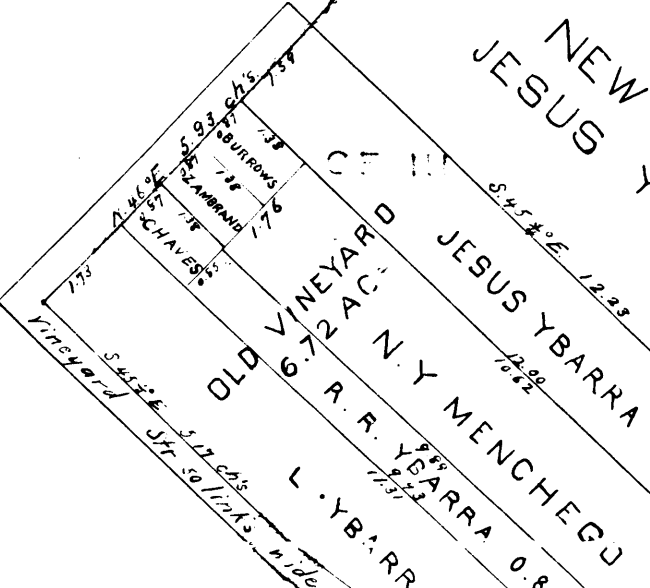
N.Y. MENCHEGU
14.301 ACs

M.L.A.F. BURROWS
16.525 ACs

P. CHAVES
14.301 ACs

JESUS YBARRA

NEW VINEYARD
JESUS YBARRA 6.72 ACs



C.F. 109

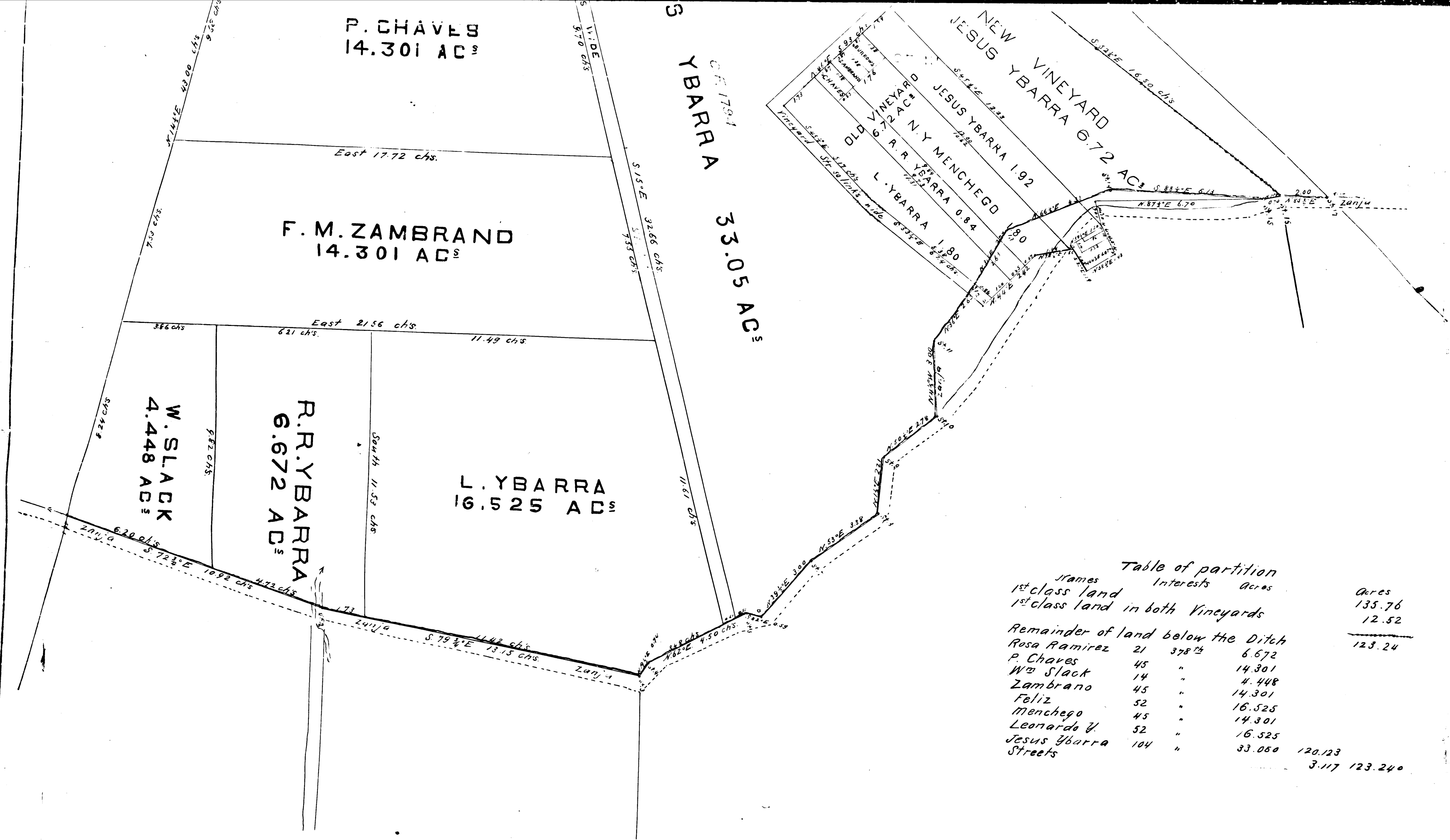


Table of partition

Names	Interests	Acres	Acres
1st class land			135.76
1st class land in both Vineyards			12.52
Remainder of land below the Ditch			123.24
Rosa Ramirez	21 3/8 th	6.672	
P. Chaves	45 "	14.301	
Wm Slack	14 "	4.448	
Zambrano	45 "	14.301	
Feliz	52 "	16.525	
Menchego	45 "	14.301	
Leonardo Y	52 "	16.525	
Jesus Ybarra	104 "	33.050	120.123
Streets			3.117
			123.240

17th District Court } California
 Los Angeles County }

William Slack et al vs. Jesus Ybarra et al.
 No 2168

We the undersign referees in partition in this suit certify, that this map shows the division made by us of the 1st class land situated north of and below the level of the irrigation ditch of this Rancho, and is the map referred to in this decree in this case and used by us in the partition.

Los Angeles November 20th 1894

George Hanson
 J. Warner
 George B. Gibbs

2
 C.F. 109

Selene Dr. Hoffman.