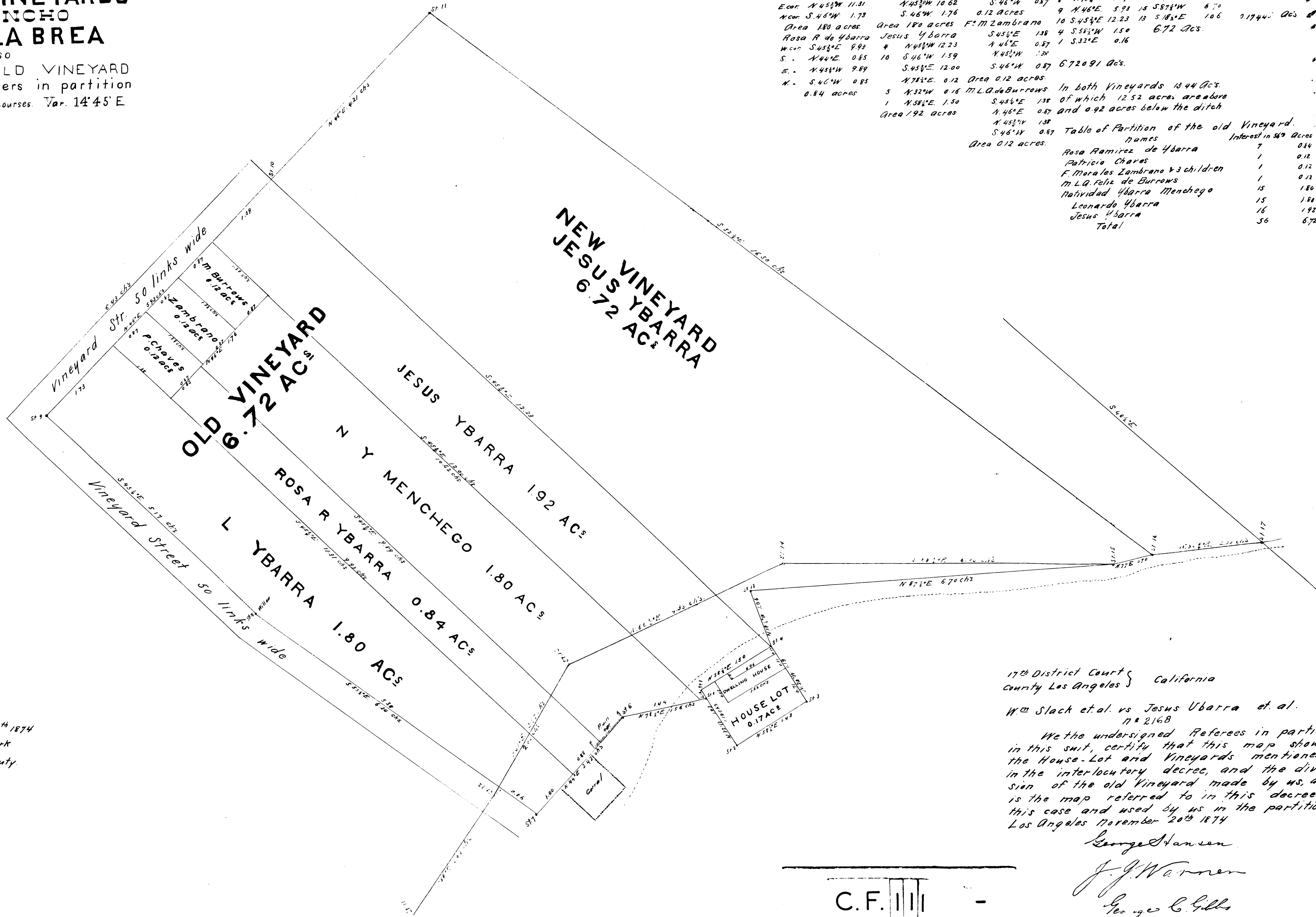
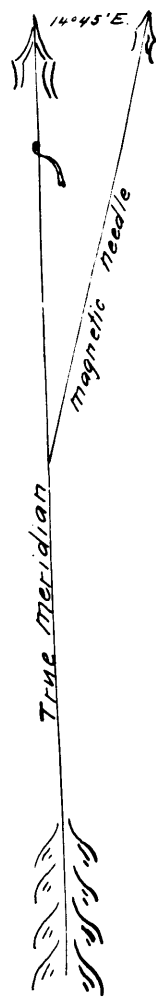


MAP  
OF THE  
**HOUSE LOT & VINEYARDS**  
OF THE RANCHO  
**RINCON DE LA BREA**

SHOWING ALSO  
SUBDIVISION OF THE OLD VINEYARD  
made by the Commissioners in partition  
Scale of 1 inch to 1 chain. True Courses. Var. 14° 45' E



**Boundaries of the Allotments.**

Leonardo Ybarra	N. Y. Menchego	Patricia Chaves	Vineyard	New Vineyard	House Lot
St. Course Dist.	St. Course Dist.	St. Course Dist.	St. Course Dist.	St. Course Dist.	St. Course Dist.
9 S. 45 1/2° E. 5.17	S. 43 1/2° E. 9.89	S. 45 1/2° E. 1.35	5 S. 76 1/2° W. 1.56	4 N. 45 1/2° W. 1.25	1 S. 32° E. 1.19
8 S. 53 1/2° E. 6.24	N. 44° E. 0.57	N. 46° E. 0.89	6 S. 44° W. 2.42	10 N. 45° E. 4.25	2 N. 88 1/2° E. 1.48
7 N. 44° E. 1.00	N. 76 1/2° E. 1.44	N. 45 1/2° W. 1.38	7 N. 55 1/2° W. 6.24	11 S. 52 1/2° E. 1.65	3 N. 28° W. 1.18
E. cor. N. 45 1/2° W. 11.31	N. 45 1/2° W. 10.62	S. 46° W. 0.87	8 N. 45 1/2° W. 5.17	16 S. 77° W. 0.75	4 S. 28 1/2° W. 1.50
N. cor. S. 46° W. 1.73	S. 46° W. 1.76	0.12 acres	9 N. 46° E. 5.93	15 S. 87 1/2° W. 6.70	
Area 180 acres	Area 180 acres	F. M. Zambrano	10 S. 45 1/2° E. 12.23	13 S. 18 1/2° E. 10.6	0.17440 acs
Rosa R de Ybarra	Jesus Ybarra	S. 45 1/2° E. 1.35	4 S. 55 1/2° W. 1.50	6.72 acs.	
N. cor. S. 45 1/2° E. 9.93	N. 45 1/2° W. 12.23	N. 46° E. 0.87	1 S. 32° E. 0.16		
S. N. 44° E. 0.65	10 S. 46° W. 1.59	N. 45 1/2° W. 1.38			
E. N. 45 1/2° W. 9.89	S. 45 1/2° E. 12.00	S. 46° W. 0.87	6.72091 acs.		
N. S. 46° W. 0.85	N. 76 1/2° E. 0.12	Area 0.12 acres			
0.84 acres	5 N. 32° W. 0.16	M. L. Q. de Burrows	In both Vineyards 13.44 acs.		
	1 N. 38 1/2° E. 1.50	S. 45 1/2° E. 1.35	of which 12.52 acres are above		
	Area 1.92 acres	N. 46° E. 0.87	and 0.92 acres below the ditch		
		N. 45 1/2° W. 1.38			
		S. 46° W. 0.87			

**Table of Partition of the old Vineyard.**

Names	Interest in 679 acres
Rosa Ramirez de Ybarra	7
Patricia Chaves	1
F. Morales Zambrano & 3 children	1
M. L. Q. Felix de Burrows	1
Natividad Ybarra Menchego	15
Leonardo Ybarra	15
Jesus Ybarra	16
Total	56

Filed November 20<sup>th</sup> 1874  
G. W. Pitts, Clerk  
By C. W. Gould, Deputy

17<sup>th</sup> District Court } California  
County Los Angeles }  
Wm Slack et al. vs Jesus Ubarra et al.  
7<sup>th</sup> 2168  
We the undersigned Referees in partition  
in this suit, certify that this map shows  
the House-Lot and Vineyards mentioned  
in the interlocutory decree, and the divi-  
sion of the old Vineyard made by us, and  
is the map referred to in this decree in  
this case and used by us in the partition.  
Los Angeles November 20<sup>th</sup> 1874

George Hansen  
J. J. Warren  
George C. Ellis

C.F. III

G. S. Jeno, Draftsman.