

PUEBLO LANDS  
of the  
CITY OF LOS ANGELES

SCOTT'S VINEYARD

SAINSEVAIN'S GARDEN

Exterior boundaries  
of Tract T<sup>o</sup> 1  
St. Courses Dist.  
1 East 33.58  
2 S. 24° W 68.28  
3 S. 18° W 20.50  
4 North 87.69  
146,743.44 acres

Table of Apportionment of Tract T<sup>o</sup> 1

Names	1 <sup>st</sup> class land Acres	2 <sup>d</sup> class land Acres	Total Acres
Gibson	3,909,560.5	10,575,449	14,485,009.5
Squires	3,909,560.5	10,575,449	14,485,009.5
Glassell & Co	31,851,929.0	85,941,492	117,893,421.0
<b>Total</b>	<b>39,771,050.0</b>	<b>106,972,390</b>	<b>146,743,440.0</b>

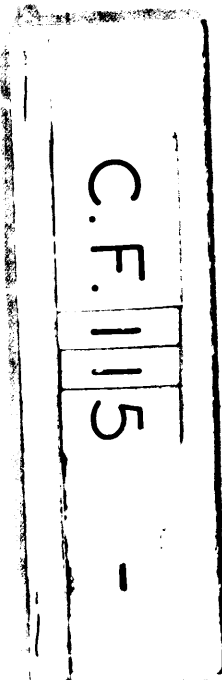
Allotment of Glassell, Chapman & Smith

St. Courses	Distance, St.	Courses	Distance
East	33.58	North	50.08
S. 24° W	24.60	East	4.04
West	21.20	N. 14° W	3.48
N. 3° W	3.49	N. 33° W	2.22
West	4.27	East	18.70
North	19.00	S. 24° W	29.51
<b>67,338.866 acres</b>		<b>50,534,781 acres</b>	
Area 117,893,421.0 acres			

Allotment of Gibson

St. Courses	Distances	St. Courses	Distances
North	9.39	North	8.76
East	20.30	East	4.27
S. 24° W	6.40	S. 3° E	3.49
West	18.70	East	21.20
S. 34° E	0.22	S. 24° W	5.77
S. 14° E	5.48	West	23.98
West	4.84		
<b>Area 14,485,009.5 acres</b>		<b>Area 14,485,009.5 acres</b>	

WESTERN HALF OF SEC 10 T. 2 S. R. 13. W.



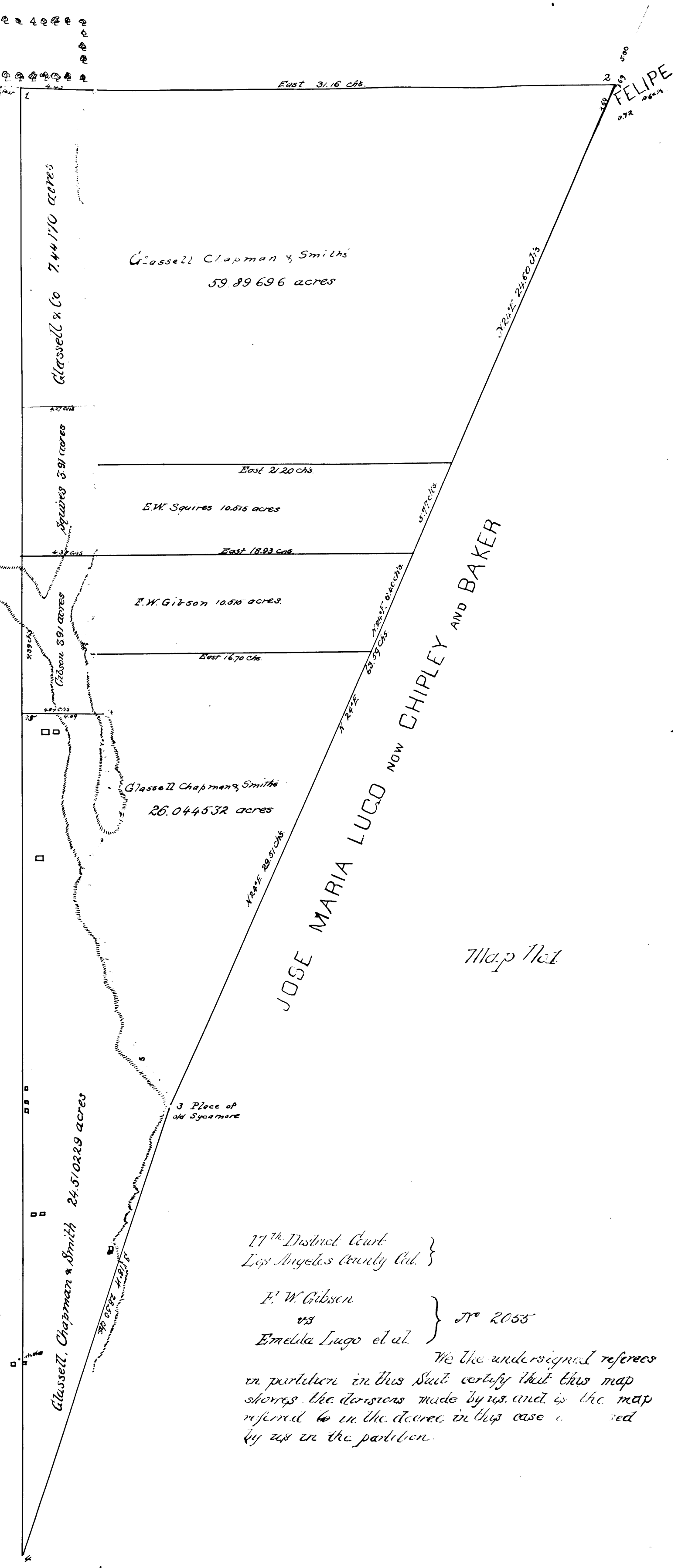
Surveyed by C.F. Hines  
For E.W. Squires 10,575,449 Ac. To L.A. Cit., Dist. No. 533-212

MAP

of that part of the

RANCHO SAN ANTONIO

in the County of Los Angeles State of California bounded North by the Pueblo Lands of the City of Los Angeles, on the East by the Jose Maria Lucio (now Chipley and Baker) tract and by the Felipe Lucio tract and on the West by the Eastern boundary of the West Half of Sec. 10 T. 2 S. R. 13 W surveyed May 1874 by George Hansen under instructions from the Commissioners in partition John S. Thompson, A. H. Owen and Willard Judge appointed by the District Court of the 17<sup>th</sup> Judicial District for Los Angeles County State of California in case No 2055 of E. W. Gibson et al. vs. Emelida Lucio et al.  
Scale of One inch to 4 chs  
for 14 to 11<sup>th</sup> True Courses



17<sup>th</sup> District Court  
Los Angeles County Cal.

E. W. Gibson

vs

Emelida Lucio et al.

No 2055

We the undersigned referees in partition in this suit certify that this map shows the divisions made by us and is the map referred to in the decree in this case and is approved by us in the partition.

Filed Dec. 12, 1874