

**ACT NO 2**

Note: Widths shown in "Dullis Red" indicate the dedicated width in District Court Case No. 3530 See Stat. Book P. 236, and were added by County Surveyor.

# MAP

Showing THE PARTITION OF A PORTION OF THE

## HOME TRACT

OF ANTONIO MARIA LUGO AND MARIA GERMAN LUGO

BEING A PORTION OF RANCHO SAN ANTONIO

Subdivided

UNDER THE INSTRUCTIONS OF THE COMMISSIONERS,

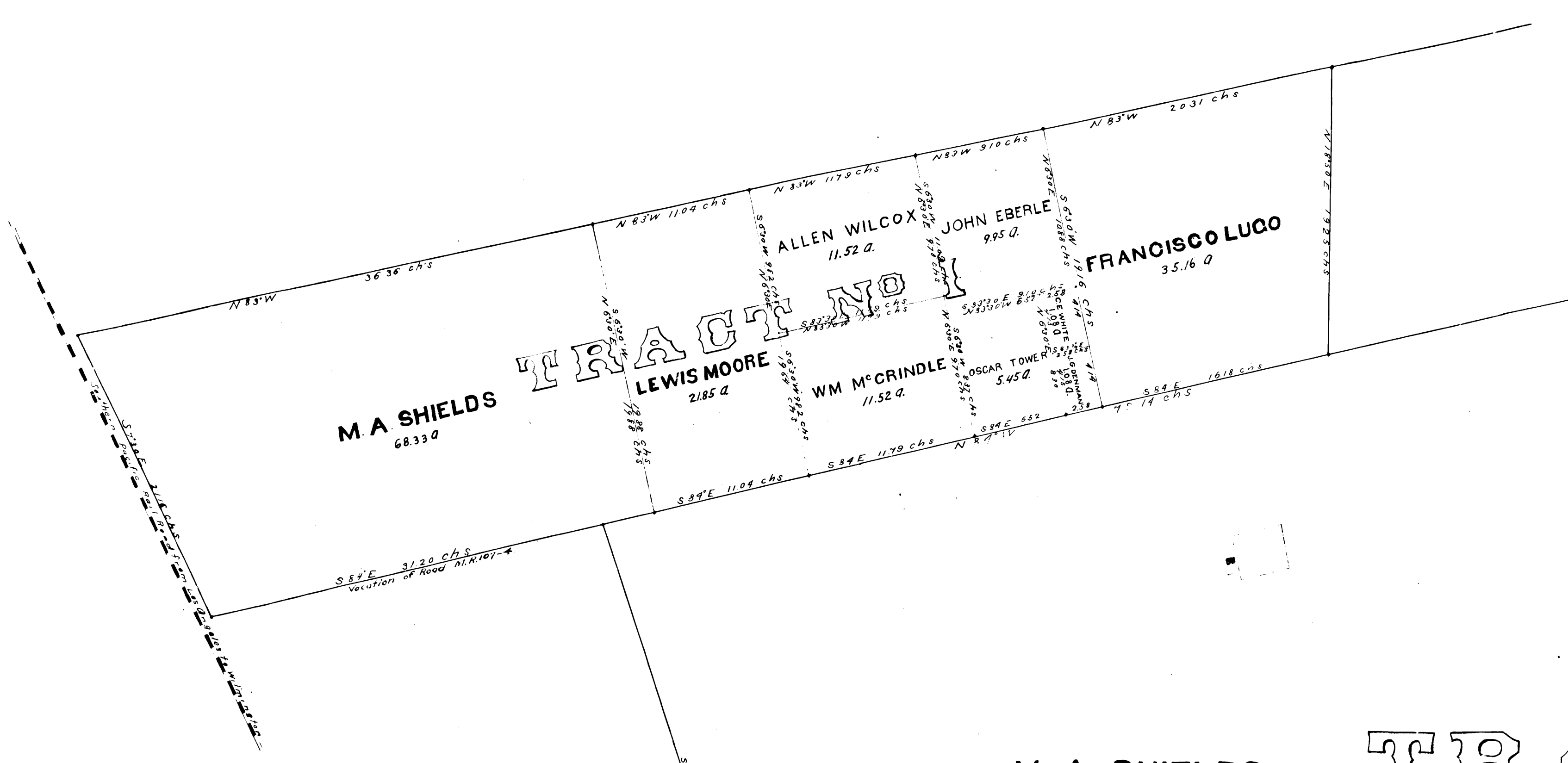
George C. Gibbs  
G. D. Compton  
John H. Wildy

MARCH & APRIL

1878

NEG. 448

Part of Tract for Howard Unit School District in E-139-83



M.A. SHIELDS  
68.33 a

# TRACT NO

LEWIS MOORE  
21.85 a

ALLEN WILCOX  
11.52 a

JOHN EBERLE  
9.95 a

FRANCISCO LUGO  
35.16 a

WM M°CRINDLE  
11.52 a

OSCAR TOWER  
5.45 a

M. A. SHIELDS  
327.31 a

# TRACT

DISTRICT COURT OF THE 17<sup>TH</sup> JUDICIAL DISTRICT  
Case No 3590

Lewis Moore } vs { Francisco Lugo  
et al } et al.

We hereby certify that this is the map to which we refer in our report as commissioners in the above named case and that it truly represents the partition made to us in the latter part of March and the first part of April of the current year

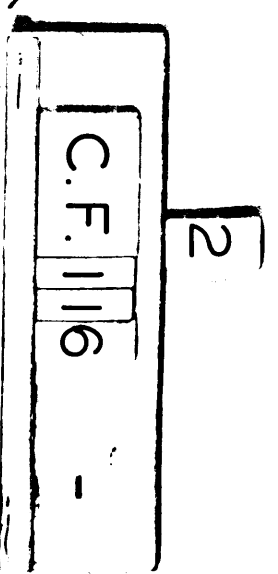
Commissioners { George C. Gibbs  
G. D. Compton  
John H. Wildy

Los Angeles California  
April 30 1878

I hereby certify that this is a true and complete map of a survey made by me according to the instructions of the above signed commissioners

John H. Wildy  
Commissioner & Surveyor

Los Angeles California  
April 30<sup>th</sup> 1878



S 71° 50' E 36.07 chs  
N 71° 50' W 36.07 chs

FRANCISCO  
234.09 a

