

T 5 R 13 W

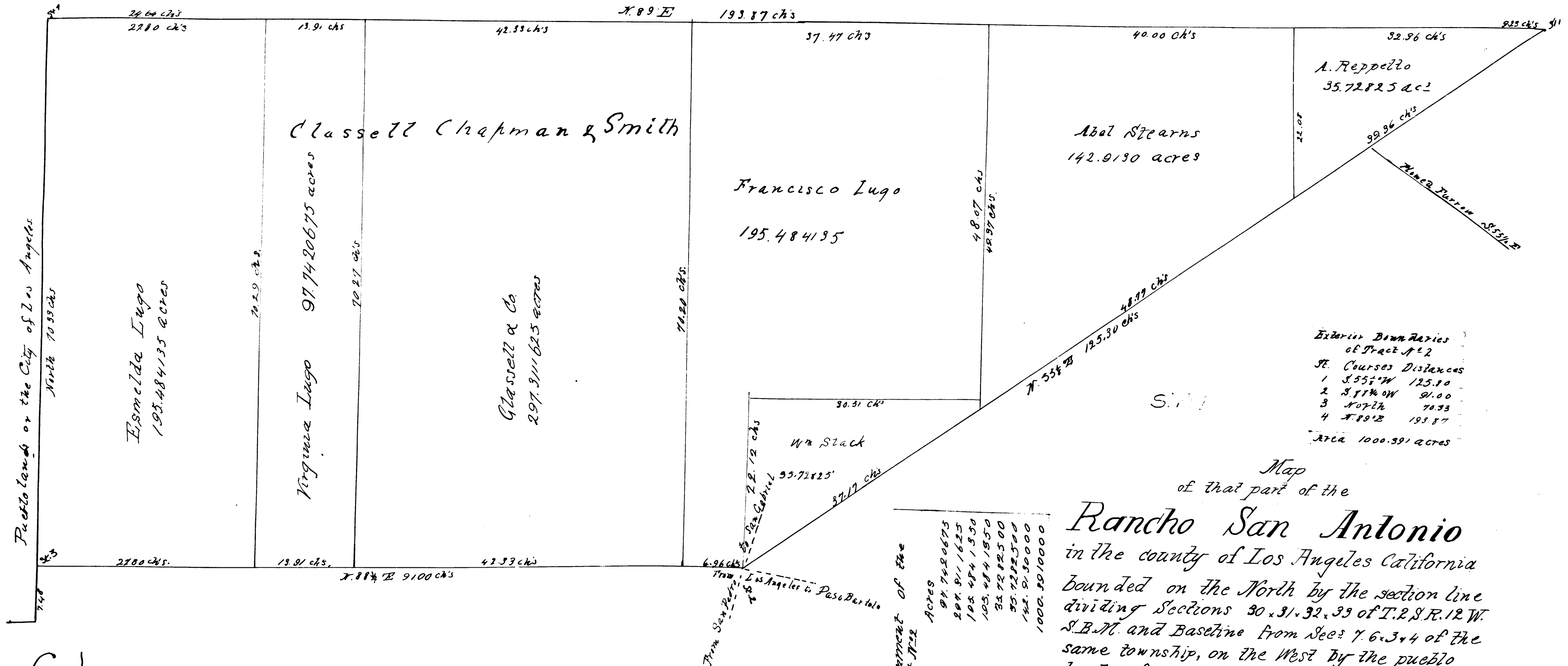
T 5 R 12 W

26

31

32

33



Exterior Boundaries of Tract No 2

St.	Course	Distances
1	S 55 1/2° W	125.10
2	S 71 1/4° W	91.00
3	N 07 1/2° E	70.33
4	N 89° E	193.87

Area 1000.391 acres

Map of that part of the
Rancho San Antonio
 in the county of Los Angeles California

Bounded on the North by the section line dividing Sections 30, 31, 32, 33 of T. 2 S. R. 12 W. S. B. M. and Baseline from Secs 7, 6, 3, 4 of the same township, on the West by the pueblo lands of the City of Los Angeles and on the South and South East by the Felipe Lugo tract of the Rancho San Antonio. Surveyed May 1874 by Geo. Hansen under instructions from the Commissioners in partition John S. Thompson, E. H. Owen and Hilliard Judge appointed by the District court of the 17th Judicial District for Los Angeles County State of California in case No 2055 of E. W. Gibson et al. vs Esmelda Lugo et al. Scale of one inch to 10 chs. Var. 1445 E True Courses.

Table of Apportionment of the Tract No 2

Name	Acres
Virginia Lugo	97.7420675
Classett & Co	297.911625
Esmelda Lugo	195.484135
Francisco Lugo	195.484135
William Slack	35.7282500
A. Reppello	35.7282500
Abel Stearns	142.913000
Total	1000.3910000

Map No 2

Gibson
 Slack
 et al
 vs
 Esmelda
 Lugo
 Filed

Dec 14th 1874
 H. W. Polt CLK
 By C. W. Gould Deputy

C.F. 1117