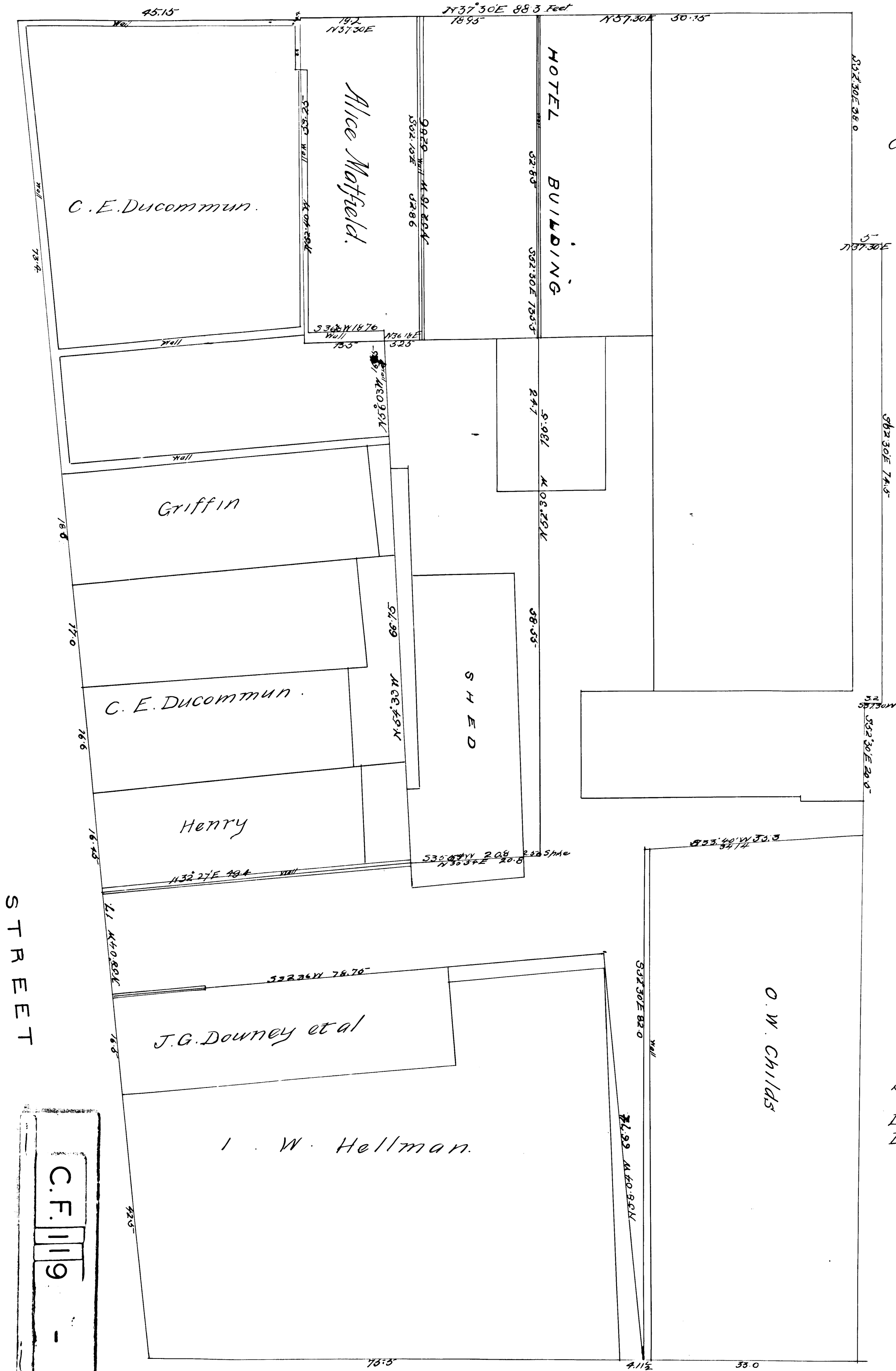


MAIN

STREET

COMMERCIAL



Late
County Bank
then
Jewellers Store

Plat of partition of the property of
S. H. Mott & Mary E. Flashner
In action No 303 of the Superior Court
Los Angeles Co. California.
S. H. Mott v. Mary E. Flashner et al.

Lines colored red and blue in this tract allotted to S. H. Mott
Lines colored yellow and green in this tract allotted to Mary E. Flashner

Scale 10 feet = 1 in. Mag. Var. 14° 30' E.

Albert G. Fluxton
Referee
August 11th 1880

Superior Court
No 303

C.F. 119

LOS ANGELES STREET