

C.F. 120 -

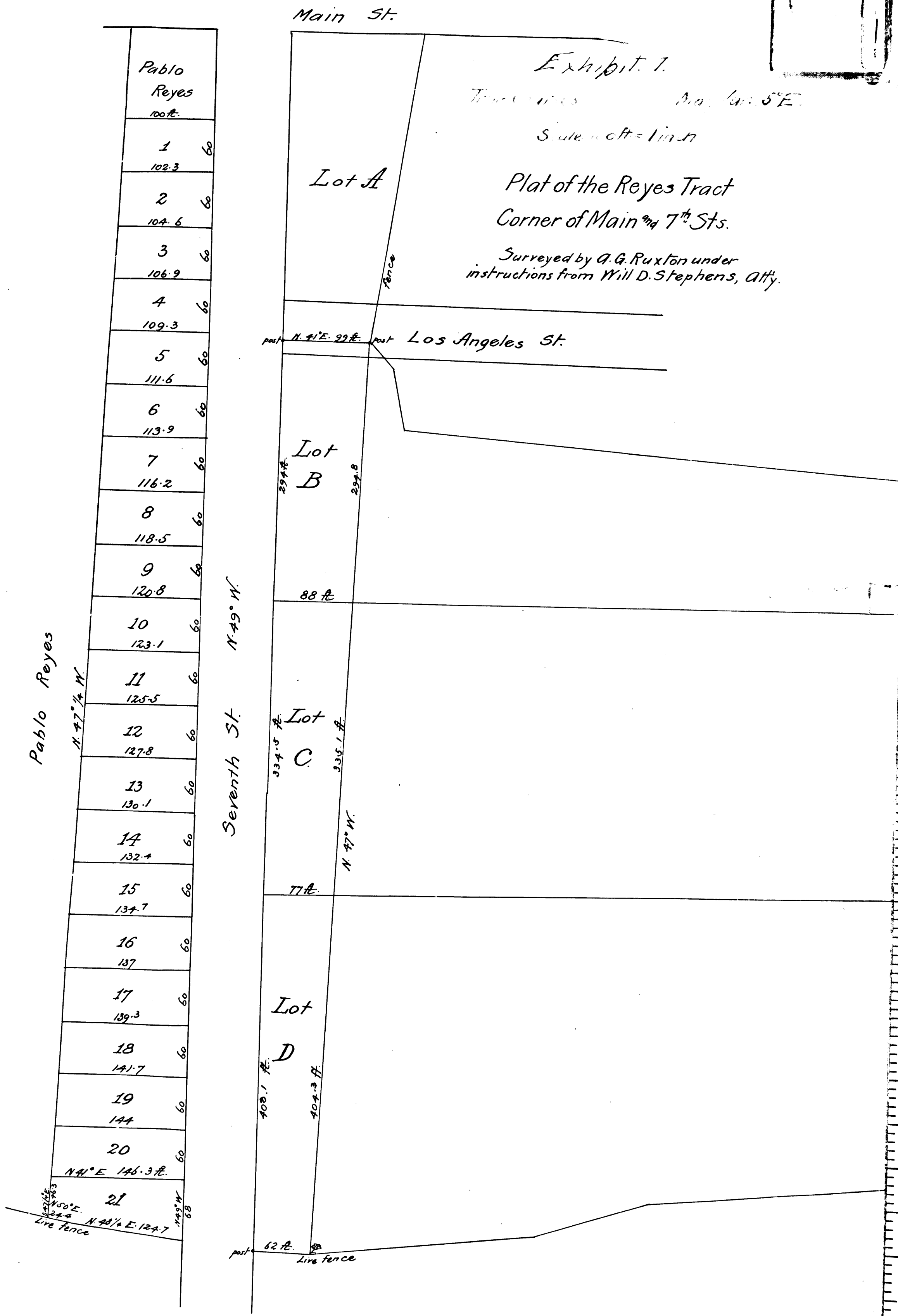


Exhibit 1.
 True Lines Area: 600,575
 Scale: 1" = 100 ft.
 Plat of the Reyes Tract
 Corner of Main and 7th Sts.
 Surveyed by A. G. Ruxton under
 instructions from Will D. Stephens, Atty.

Superior Court Case No 431
 K.