

Plan
of the
La Puente Mill Property
owned by
J.H Temple Lucy T. De Arnez and three minor heirs.

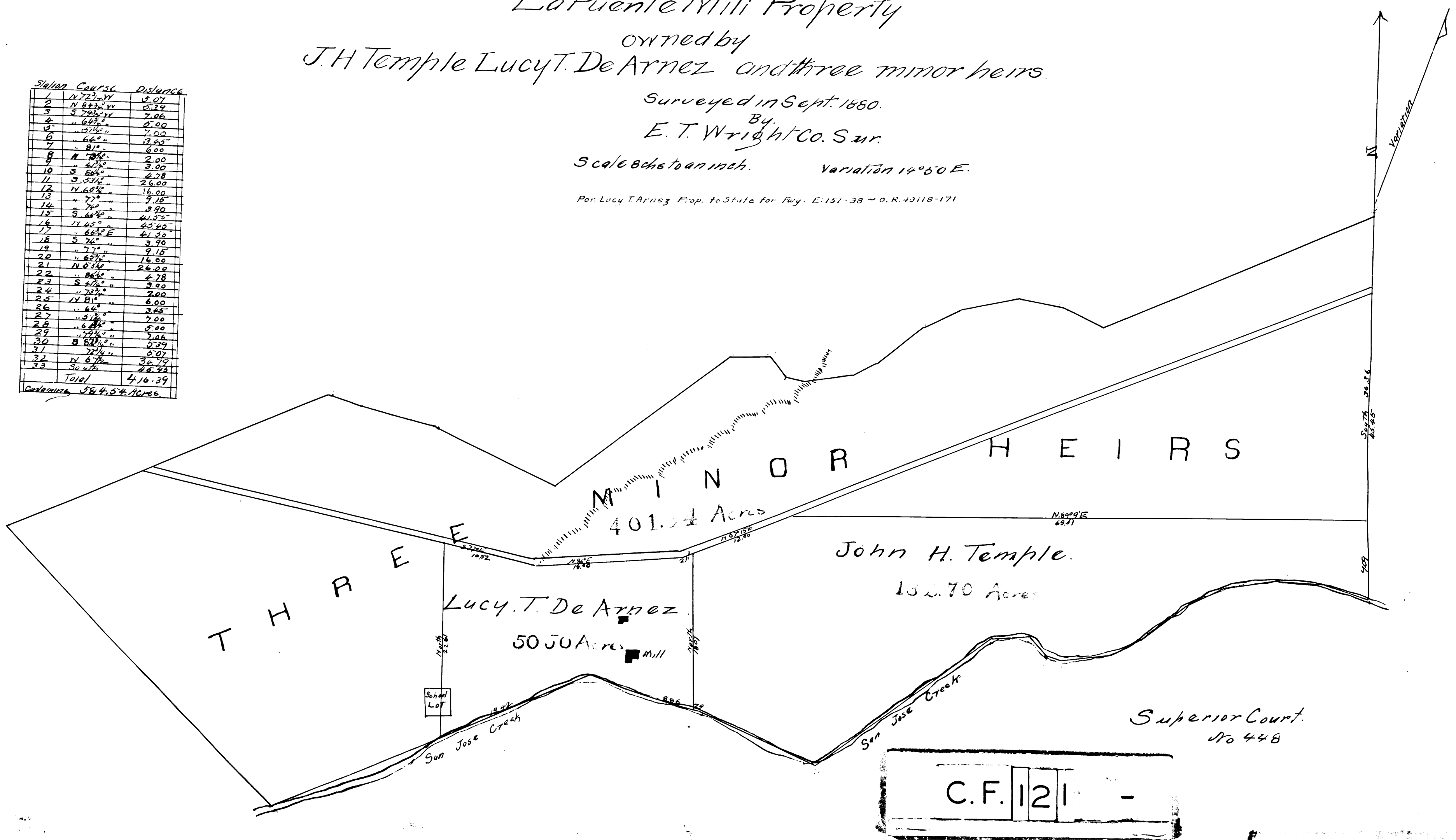
Surveyed in Sept. 1850.
By
E. T. Wright Co. Sur.

Scale 8ch to an inch. Variation 14°50' E.

Pat. Lucy T. Arnez Prop. to State for Fay. E. 151-38 ~ O.R. 43118-171

Station	Course	Distance
1	N 72° W	3.07
2	N 84° W	0.27
3	S 70° W	7.06
4	" 64° "	0.00
5	" 07° "	7.00
6	" 66° "	3.65
7	" 81° "	6.00
8	N 70° "	2.00
9	" 47° "	3.00
10	S 58° "	4.78
11	S 53° "	26.00
12	N 68° "	16.00
13	" 77° "	2.12
14	" 74° "	3.90
15	S 64° "	61.50
16	N 42° "	40.65
17	S 63° E	41.20
18	S 74° "	3.90
19	" 77° "	9.15
20	" 63° "	16.00
21	N 63° "	26.00
22	" 84° "	4.78
23	S 57° "	3.00
24	" 72° "	2.39
25	N 81° "	6.00
26	" 66° "	3.65
27	" 51° "	7.00
28	" 68° "	0.00
29	" 47° "	3.00
30	S 81° "	2.06
31	" 74° "	0.07
32	N 67° "	30.79
33	S 47° "	46.45
Total		416.39

Containing 384.54 Acres.



Superior Court
No 448

C.F. 121 -