

os Angeles

appointed  
 e sui. hereby  
 red to, in  
 date

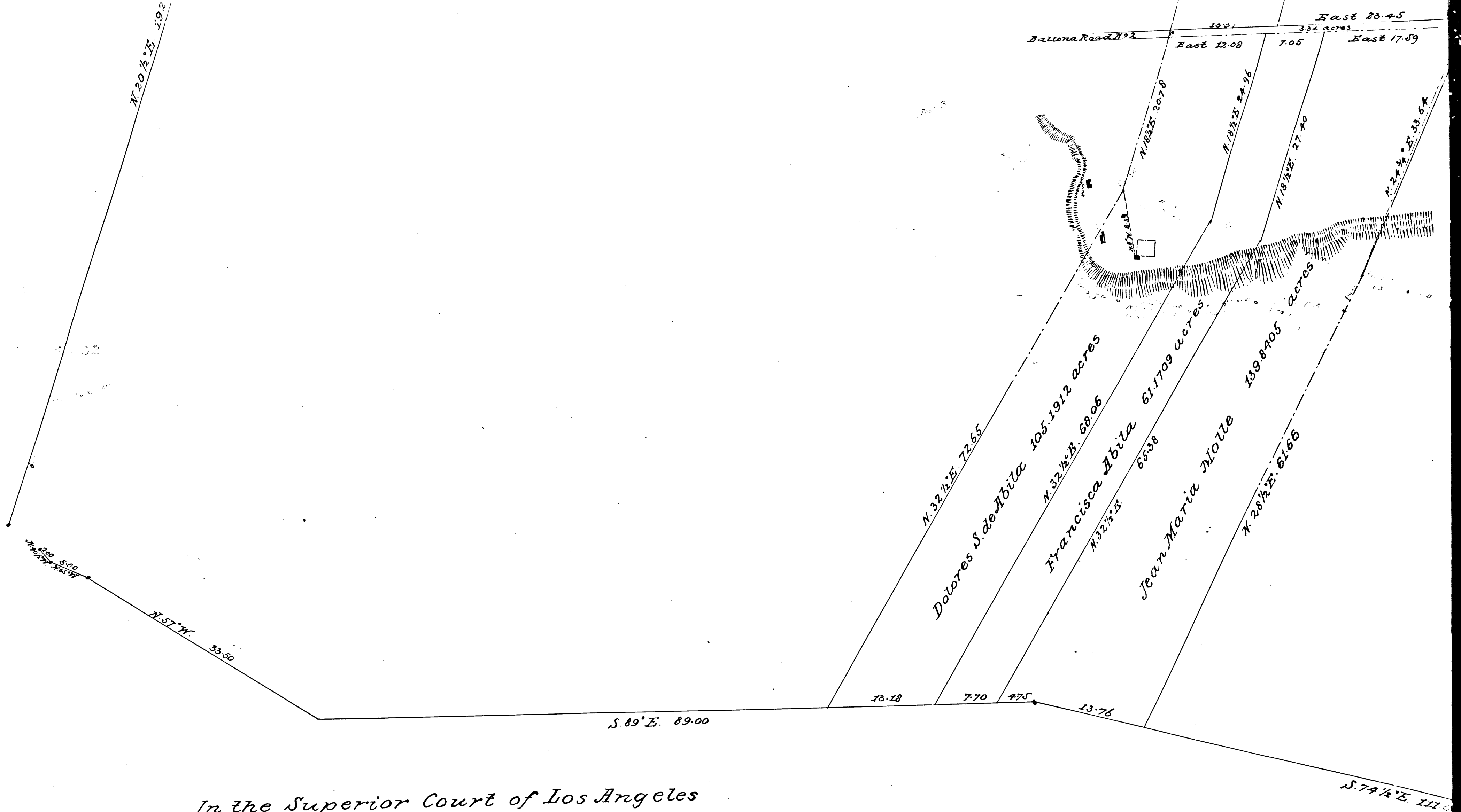
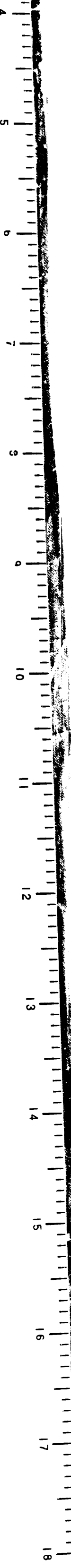
Referees

C.F. 123 -

EST. ON MAP, QUARTER CORNER



MEMCO  
PASADENA, CAL.

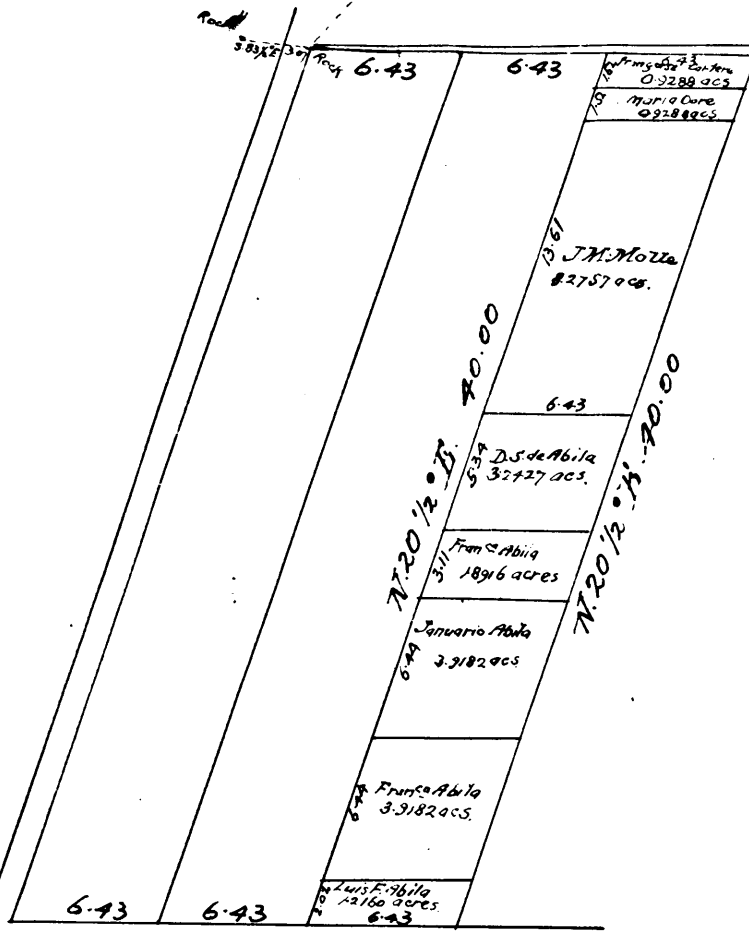


In the Superior Court of Los Angeles  
County, State of California  
Jean Marie Molle  
vs  
Dolores S. de Abila et al. } No 860

We the Referees appointed  
to make partition in the above suit hereby  
certify this to be the map referred to, in  
our report of partition of this date  
Los Angeles, Feb. 18<sup>th</sup> 1882.

H.M. Mitchell  
John M. Baldwin  
George Hansen } Referees

2  
C.F. 123 -



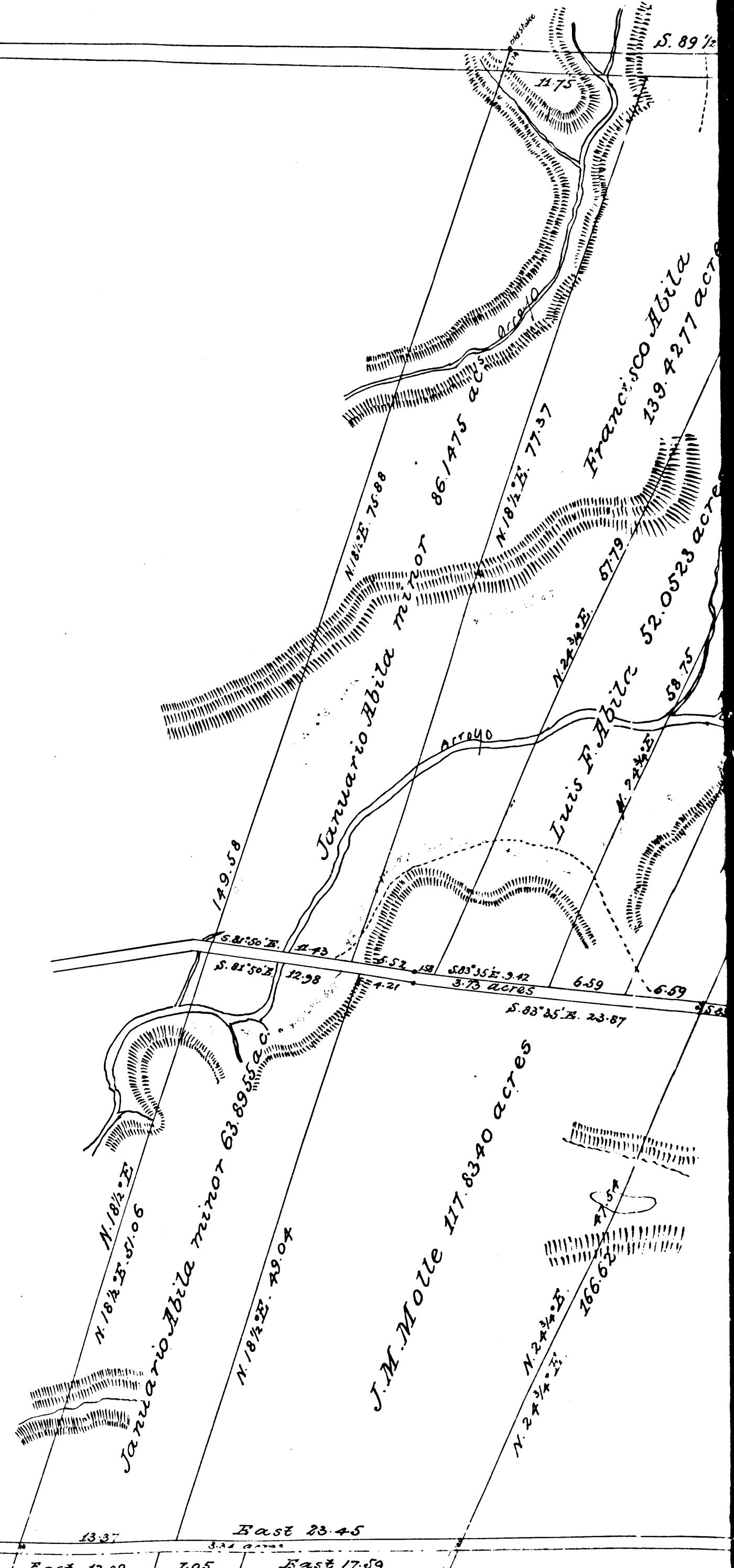
Map  
of the  
**JANUARIO ABILA TRACT**  
in the Rancho  
**LA CIENEGA**  
in the County of  
LOS ANGELES CALIFORNIA

showing  
the partition thereof made under  
the decree of the Superior Court  
of the Los Angeles County, State  
of California, of date Nov. 11<sup>th</sup> 1881  
by the Referees in partition  
H.M. Mitchell, J.M. Baldwin and  
George Hansen.

January 1882  
Surveyed under the direction  
of said Referees by Alfred Solano.  
Scale of 1 inch to 10 ch's. Var. 14°45' E.

3

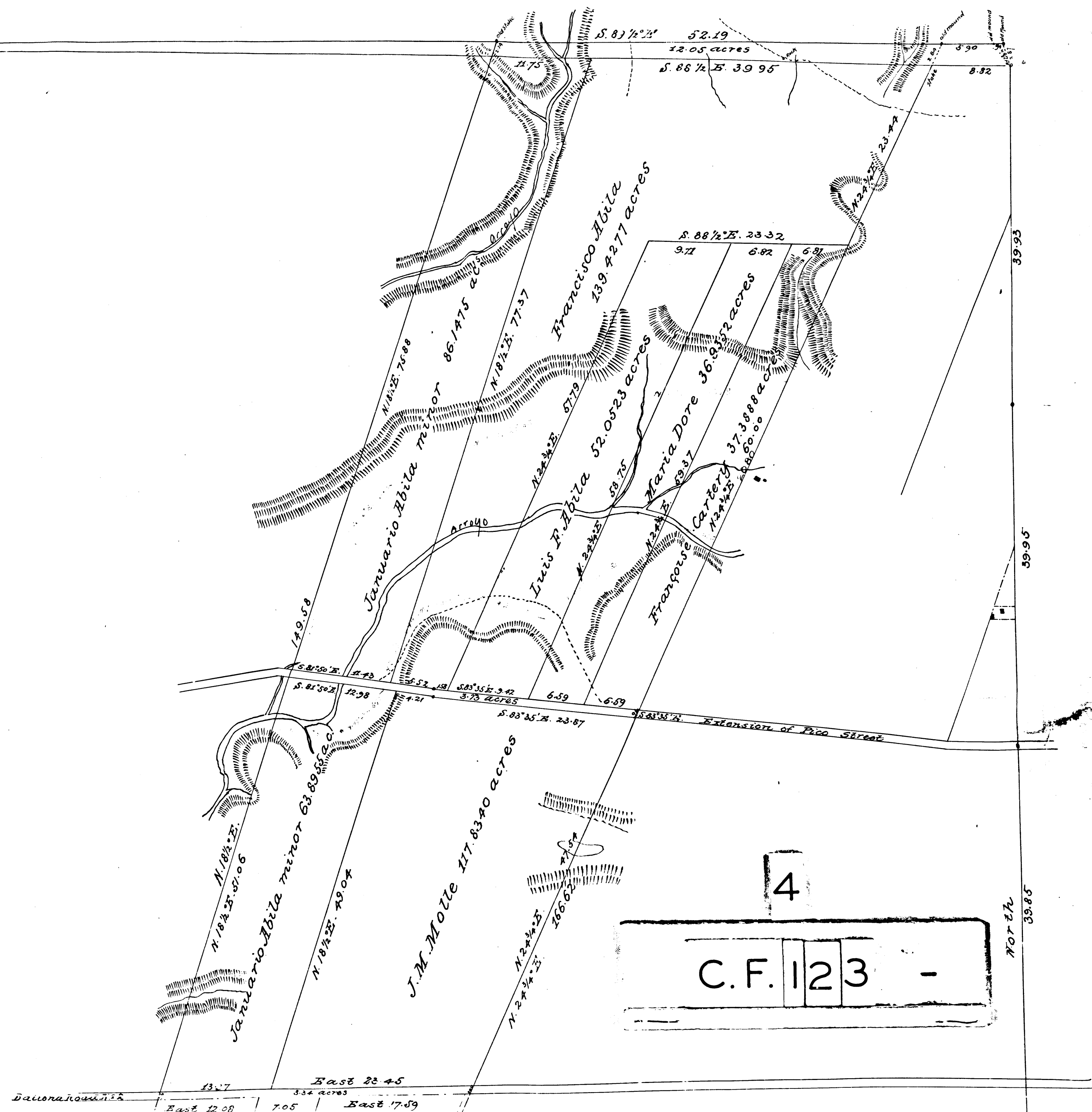
C.F. 123 -



20 1/2 E. 192.38

Rolling Road N. 7  
Base 23.45  
Base 12.08 7.05 Base 17.89

TRACT  
 of  
 ORNIA  
 made under  
 prior Court  
 nty, State  
 Nov. 11<sup>th</sup> 1881  
 partition  
 win and  
 1882  
 direction  
 Alfred Solano.  
 Var. 14°45' E.



100  
 50  
 0  
 50  
 100  
 150  
 200  
 250  
 300  
 350  
 400  
 450  
 500  
 550  
 600  
 650  
 700  
 750  
 800  
 850  
 900  
 950  
 1000

MEMCO  
 PASADENA, CAL.

957

1000

