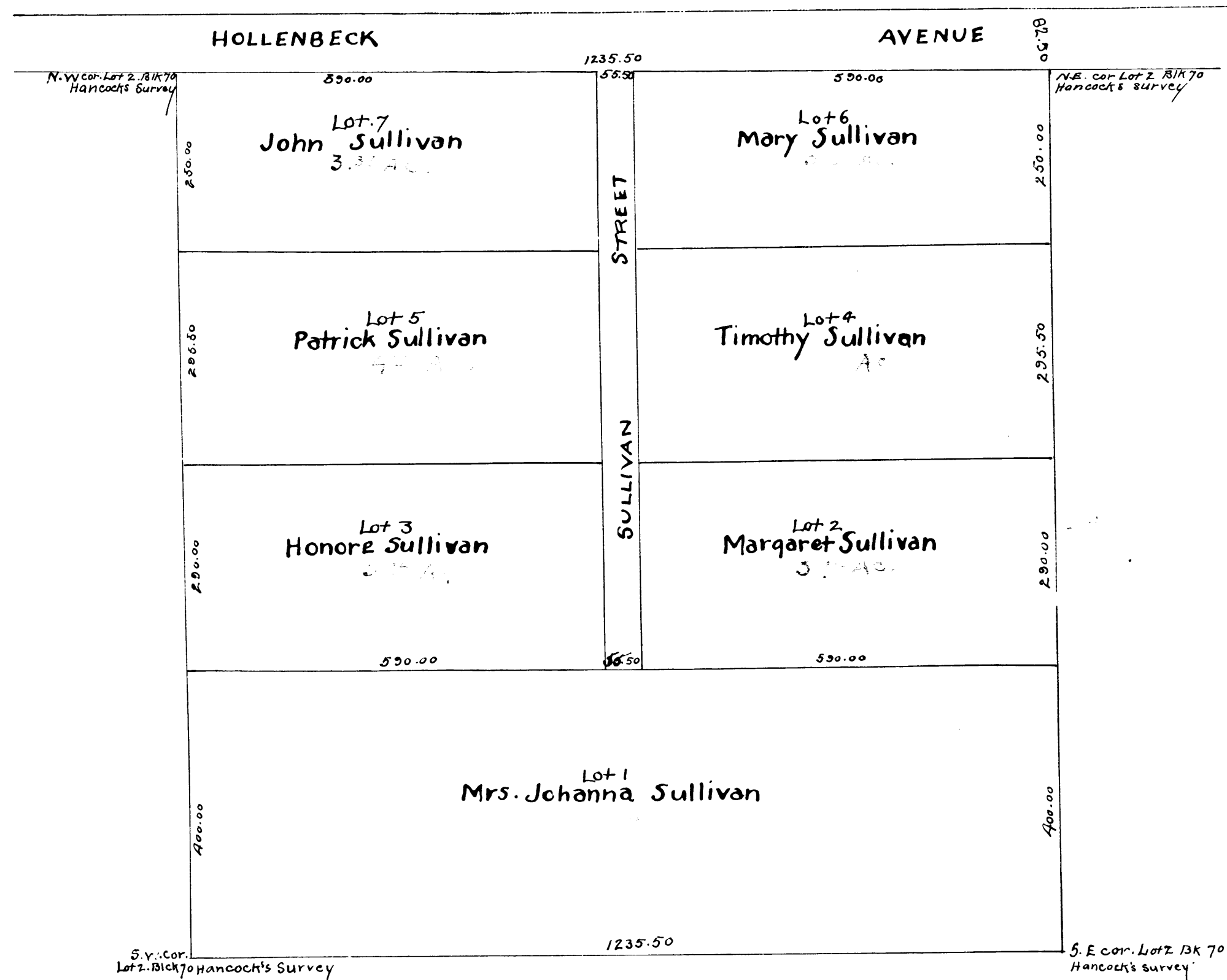


PLAT
OF
LOT 2 BLOCK 70

HANCOCK'S SURVEY, 35 ACRE DONATION LOTS
in the
CITY OF LOS ANGELES

Showing subdivision and partition of said lot between the Heirs of Timothy Sullivan
by order of the Hon. Superior Court of the State of California
in and for the County of Los Angeles

Scale 200ft to 1 inch



In re
Estate Timothy Sullivan

Case No. 1856
Probate Dept
Superior Court
Los Angeles Co.

P. E. Rowan
William
Geo. C. Knapp

COMMISSIONERS
IN
PARTITION

C.F. 128 -