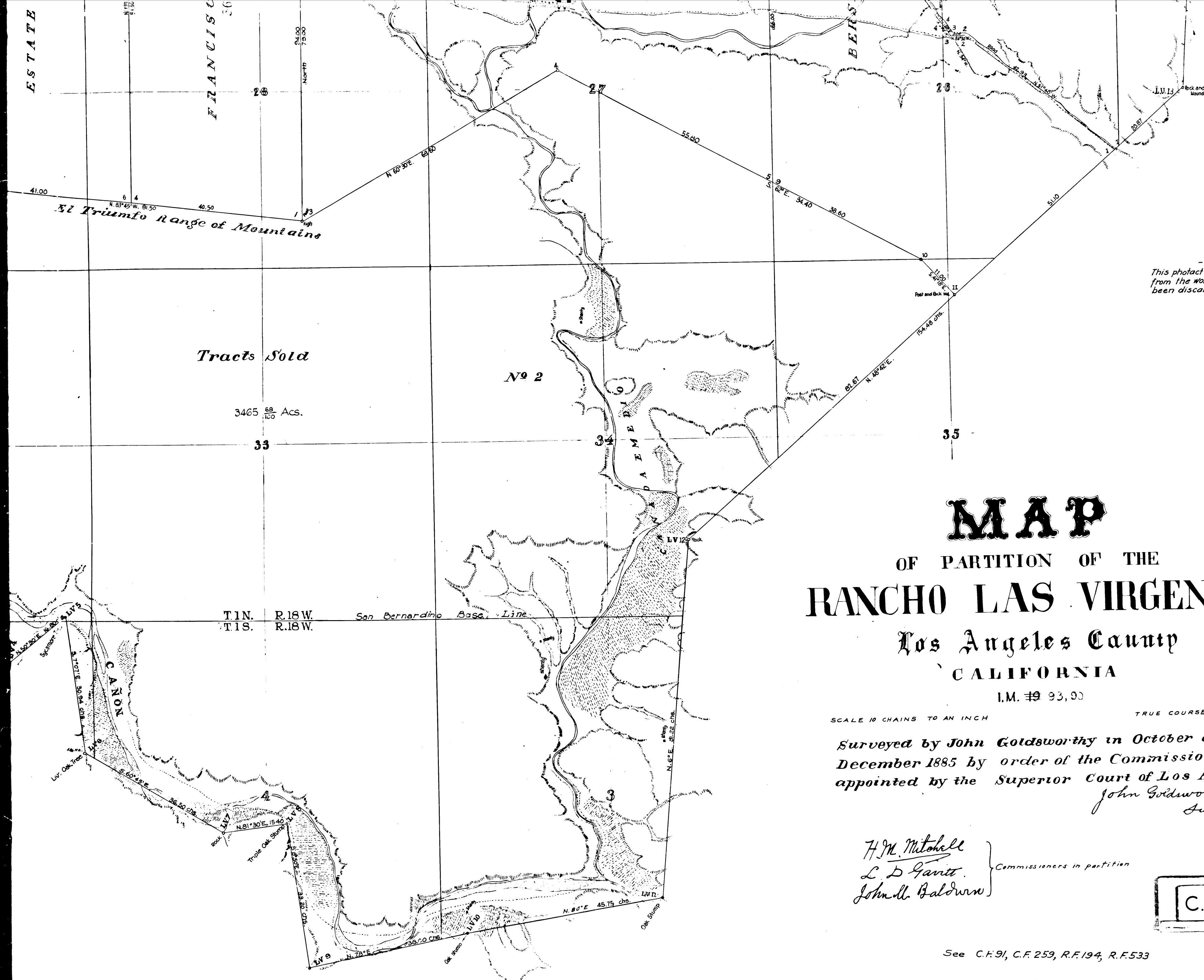


ESTATE

FRANCISCO

BERR

Rock and Stone
Mound



Tracts Sold

3465 ⁶⁸/₁₀₀ Acs.

No 2

T.1N. R.18W.
T.1S. R.18W.

San Bernardino Base Line

MAP

OF PARTITION OF THE
RANCHO LAS VIRGENES
 Los Angeles County
 CALIFORNIA

I.M. #9 93,00

SCALE 10 CHAINS TO AN INCH

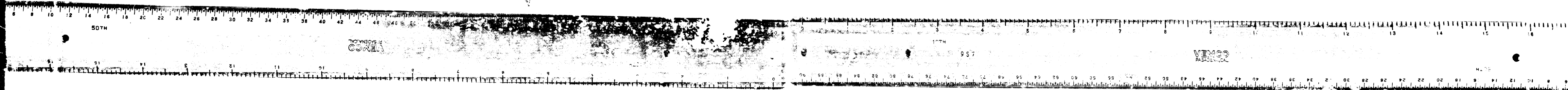
TRUE COURSE

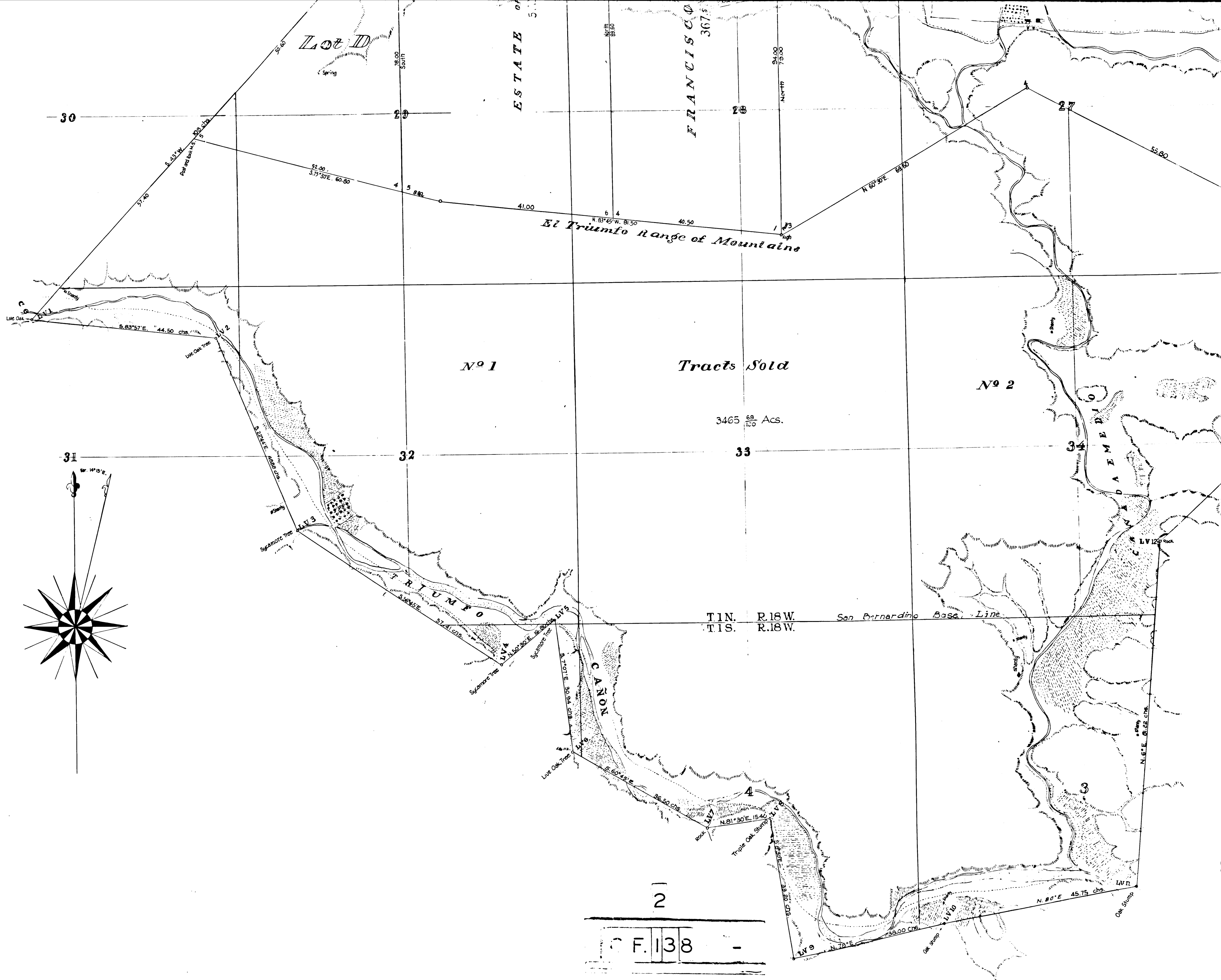
Surveyed by John Goldsworthy in October and
 December 1885 by order of the Commissioners
 appointed by the Superior Court of Los Angeles
John Goldsworthy
 Junr

H.M. Mitchell
L.D. Garitt
John M. Baldwin } Commissioners in partition

C.F. 138

See C.F. 91, C.F. 259, R.F. 194, R.F. 533





SIMI RANCHO 15

L.S. 8-33



CONEJO RANCHO

El Triunfo Range of Mountains

C.F. 138

No 1

Tracts Sold

SIMI RANCHO

13

14

West 303.05 chs. 248.95

L.S. 8-33

1 7 25.60

A M A R G A

Lot B

MIGUEL LEONIS

1767³⁰/₃₃ Acs.

CANADA

QUEMADO

PALO

CANADA

LARGA

Lot A

Lot C

JUANA MARIA de BOTILLER

830⁸⁹/₉₉ Acs.

Lot J

PABLO REYES

727³¹/₃₃ Acs.

Lot F

FRANCISCO REYES

367⁸⁰/₈₀ Acs.

Lot H

DOLORES VEJAR

634³⁶/₃₃ Acs.

BERNABE R. VEJAR

611⁵⁴/₃₃ Acs.

ROAD FROM VENTURE TO LOS ANGELES

UNDERO

91.00

73.00

North

91.00

73.00

North

91.00

73.00

North

91.00

73.00

North

91.00

73.00

North

91.00

73.00

North

Triunfo Range of Mountains

Tracts Sold

Ac 2

4

C.F. 138

- NOTE -
This photact made in April, 1958
from the worn tracing which has
been discarded.