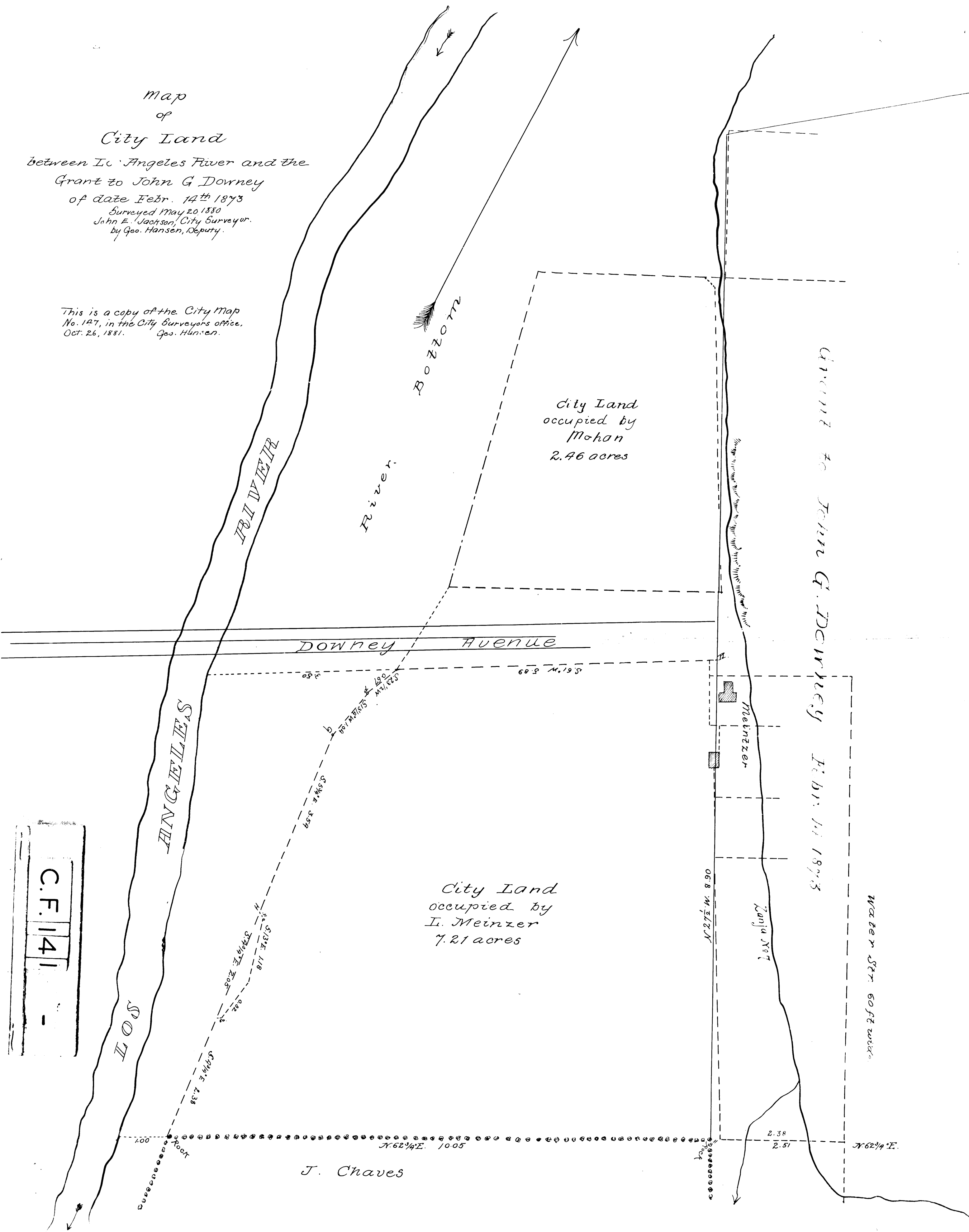


Map
of
City Land
between Los Angeles River and the
Grant to John G Downey
of date Febr. 14th 1873
Surveyed May 20 1880
John E. Jackson, City Surveyor.
by Geo. Hansen, Deputy.

This is a copy of the City Map
No. 147, in the City Surveyors office.
Oct. 26, 1881. Geo. Hansen.



C.F. 141

City Land
occupied by
Mohan
2.46 acres

City Land
occupied by
I. Meinzer
7.21 acres

Grant to John G. Downey
Febr. 14 1873

Water St. 60 ft wide

J. Chaves