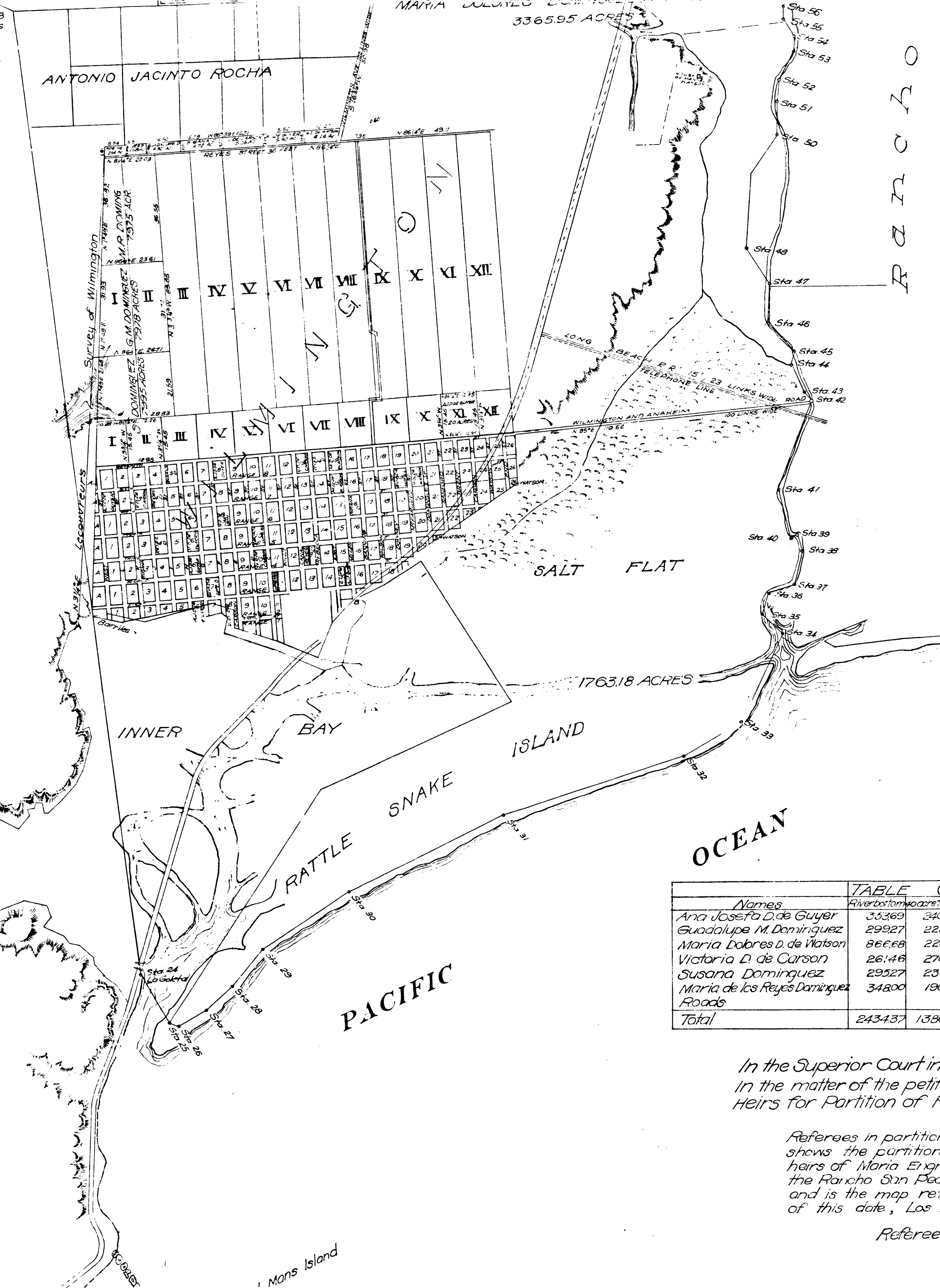


R. DOMINGUEZ		ROADS	
ACT	RAIRIE LAND	R.R. AVE. 227 X 495.85 Chs	115.51 Acres
Dist	Sta	Dist	Sta
71.25	176.57	Wilmington Avenue 410.97 X 100 Chs	41.09
17.50	184.07	Wilmington Road 100 X 141.67 Chs	14.17
12.50	196.57	Victoria Street 100 X 349.90 Chs	34.99
34.16	230.73	Los Angeles Street 100 X 143.06 Chs	14.31
37.08	267.81	Dominguez Street 100 X 175.00 Chs	17.50
10.55	278.36	Carson Street 100 X 167.40 Chs	16.74
55.15	333.51	Wilmington Str extension 100 X 269.00 Chs	26.90
6.64	340.15	Dolores Street 100 X 337.24 Chs	33.72
29.42	369.57	Ocean Street 50 X 337.24 Chs	16.86
34.00	403.57	Rocha Street 50 X 78.28 Chs	3.91
12.00	415.57	Reyes Street 48 X 143.00 Chs	6.86
25.00	440.57	Wilmington & Anaheim Road 100 X 168.00 Chs	16.80
10.00	450.57	Long Beach Str Car track 23 X 85.00 Chs	1.98
60.58	511.15	Total	335.95
90.58	601.73		
OCEAN TRACT			
TRACT	53.0° E	520	
53.0° E	52.0° E	2648	
152.20	16.0° E	45.65	
6.04	12.0° N	31.65	
4.569	56.0° N	45.34	
4318	Table land	4423.43	
114.32			
WILMINGTON			
TRACT	51.0° W	36.82	
51.0° W	13.0° E	23.61	
2000	13.0° W	36.55	
800	58.0° W	20.03	
800	Table land	79.01	
WILMINGTON BUILDING LOTS			
1300	Lots 2, 3, 4, 8, 10, 12 in		
400	Range 5 Block 4		
1400	Range 7 Block 4		
9991	Range 9 Block 14		
3419			
2178			
9700	80.0° W	2.85	
3500	126.0° E	5.51	
2280	16.0° W	2.91	
346004	58.0° W	5.51	
3181	Table land	158.43	
7781			



5	5.0° E	6.50
6	5.72° E	15.00
7	5.63° E	16.00
8	12.24° E	14.13
9	14.65° E	11.50
10	16.04° E	11.50
11	15.84° E	16.00
12	5.34° E	33.00
13	5.67° W	78.50
14	5.34° W	98.00
15	13.15° N	19.44
16	12.73° W	125.20

Area 100.59 Acres
Of which is contained in the extension of 100 yds. of Wilmington 43.40 Ac.
Navigable waters 224.10 Ac.
Balance 653.09 Ac.

Sta	Courses	Dist	Sta	Courses	Dist
12	5.34° E	59.00	35	118.4° E	7.79
13	5.67° W	76.50	36	125.4° E	10.05
14	5.34° W	98.00	37	114.4° E	12.36
25	5.66° E	380.38		116.4° N	59.4
26	16.04° W	1131.39		3.65° W	22.9
27	15.50° E	1050.40		115.4° E	11.10
28	14.15° E	2000.41		124.4° E	33.71
29	15.74° E	3500		5.85° N	110.62
30	16.6° E	6600		3.33° E	16.08
31	17.3° E	6700		5.56° W	73.60
32	16.1° E	2480		5.51° E	2.15
33	12.7° E	3479		116.9° E	10.00
34	14.9° N	10.11		115.8° E	16.00
Area		1763.18	Acres		

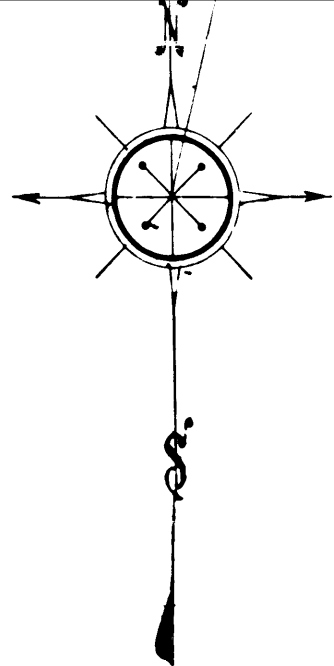
This photact tracing made September 1957 from the worn tracing which has been discarded.
Retouched by Frank Wood, May 1958
Checked by RJA
Note: Photact tracing filed in vault.

Names	TABLE OF ALLOTMENTS									
	River bottom	Moore tract	High land	Valley land	Table land	Alkali	Water	Dunes	Total	
Ana Josefa D. de Guyer	35369	24000			275580		3000	7500	345149	
Guadalupe M. Dominguez	29927	22865	719.25		2072.43	51.12	1346.4	8700	359236	
Maria Dobres D. de Watson	866.69	22000			2280.51	20000	2300		3590.19	
Victoria D. de Carson	261.46	27012	519.43	421.00	1772.83	23800	3700		3519.84	
Susana Dominguez	29527	23140	32956	314.12	2176.71	516.67	27455	7300	4211.28	
Maria de los Reyes Dominguez	34800	19058	611.05		2167.23		131.81	7000	3518.67	
Roads									335.82	
Total	243437	138075	217929	735.12	13225.51	100579	63100	30500	22222.68	

In the Superior Court in and for Los Angeles County, California
In the matter of the petition of Dominguez } No 3284
Heirs for Partition of Real Estate

We the undersigned Referees in partition, do hereby certify that this map shows the partition made by us of the lands of the heirs of Maria Engracia Cota de Dominguez deceased in the Rancho San Pedro in Los Angeles County, California and is the map referred to in our report of partition of this date, Los Angeles June 15, 1885
Referees { Leonardo Cota
Henry D. Barrows
George Hansen

C.F. 145 -



OF THAT PART OF THE

RANCHO SAN PEDRO

IN THE COUNTY OF LOS ANGELES CALIFORNIA

WHICH WAS ALLOTTED TO MANUEL DOMINGUEZ

by the decrees in the District Court of the 1st Judicial District of Cal. in and for the County of Los Angeles in the case of Francisco de R. Rodriguez et al vs Pedro A Dominguez et al No. 196 and in the case of Phineas Banning et al vs J.G. Downey et al No. 677

showing

the partition made by the referees in partition Leonardo Cota, H.D. Barrows & George Hansen under the decree of the Superior Court in and for Los Angeles County, California of date June 27-1884 of all those parts of the said allotments, which belong to the heirs of

MARIA ENGRACIA COTA DE DOMINGUEZ DEC'D

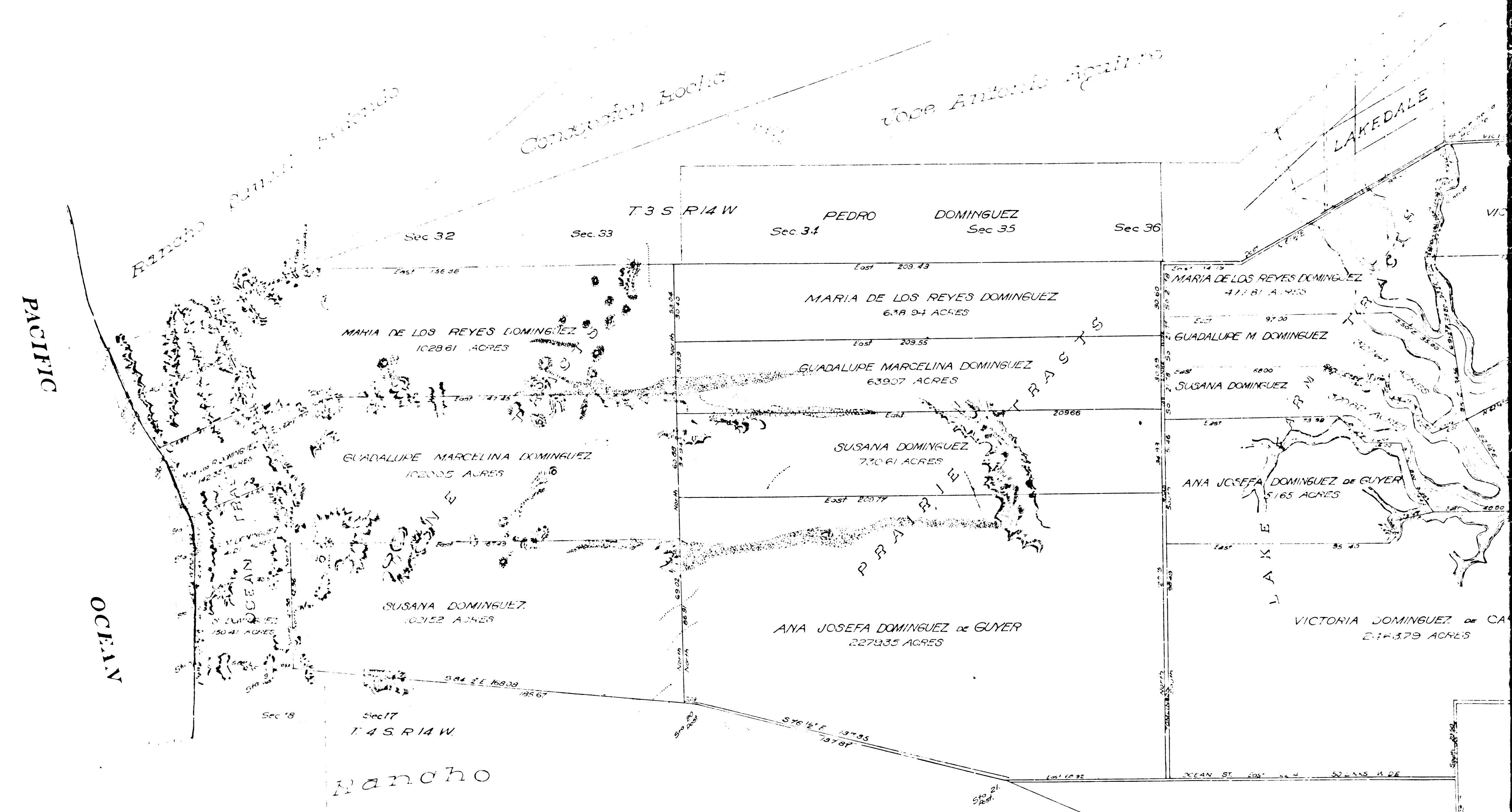
namely Ana Josefa Dominguez de Guyer wife of Charles Guyer, Guadalupe Marcelina Dominguez, Maria Dolores Dominguez de Watson, widow of James Watson deceased Victoria Dominguez de Carson wife of George Carson, Susana Dominguez and Maria de los Reyes Dominguez.

Neg. 72

Scale 1In = 20 Ch's

TRACT PARTITIONED		ESTUARY TRACT	A. J. D. de GUYER	GUADALUPE M. DOMINGUEZ	M. D. de WATSON	SUSANA DOMINGUEZ	V. D. de CARSON	M. de los R. DOMINGUEZ	ROADS
14	3.34°E 320 67	N30°E 114.7	RIVER TRACT	RIVER TRACT	LAKE FARM	WATSON TRACT	RIVER TRACT	PRAIRIE LAND	RIVER TRACT
15	3.24°E 30.00 68	N44°E 8.85	Continued	Continued	Continued	Continued	Continued	Continued	Continued
16	3.74°E 13.92 69	N48°E 10.05	Continued	Continued	Continued	Continued	Continued	Continued	Continued
17	3.24°E 23.00 70	N62°E 6.20	Continued	Continued	Continued	Continued	Continued	Continued	Continued
18	3.74°E 20.92 71	N47°E 6.99	Continued	Continued	Continued	Continued	Continued	Continued	Continued
19	3.24°E 32.10 72	N64°E 10.00	Continued	Continued	Continued	Continued	Continued	Continued	Continued
20	3.74°E 18.57 73	N47°E 6.94	Continued	Continued	Continued	Continued	Continued	Continued	Continued
21	3.76°E 13.77 74	N68°E 4.87	Continued	Continued	Continued	Continued	Continued	Continued	Continued
22	3.76°E 39.35 75	N24°E 10.22	Continued	Continued	Continued	Continued	Continued	Continued	Continued
23	3.76°E 78.70 76	N44°E 10.80	Continued	Continued	Continued	Continued	Continued	Continued	Continued
24	3.16°E 47.38 77	N23°E 15.72	Continued	Continued	Continued	Continued	Continued	Continued	Continued
25	3.74°E 87.70 78	N35°E 5.69	Continued	Continued	Continued	Continued	Continued	Continued	Continued
26	3.76°E 86.16 79	N60°E 5.19	Continued	Continued	Continued	Continued	Continued	Continued	Continued
27	3.76°E 185.67 80	N15°E 7.75	Continued	Continued	Continued	Continued	Continued	Continued	Continued
28	3.76°E 192.85 81	N24°E 9.22	Continued	Continued	Continued	Continued	Continued	Continued	Continued
29	3.76°E 39.35 82	N40°E 6.39	Continued	Continued	Continued	Continued	Continued	Continued	Continued
30	3.76°E 78.70 83	N40°E 10.22	Continued	Continued	Continued	Continued	Continued	Continued	Continued
31	3.76°E 87.70 84	N23°E 15.72	Continued	Continued	Continued	Continued	Continued	Continued	Continued
32	3.76°E 86.16 85	N35°E 5.69	Continued	Continued	Continued	Continued	Continued	Continued	Continued
33	3.76°E 185.67 86	N60°E 5.19	Continued	Continued	Continued	Continued	Continued	Continued	Continued
34	3.76°E 192.85 87	N15°E 7.75	Continued	Continued	Continued	Continued	Continued	Continued	Continued
35	3.76°E 39.35 88	N24°E 9.22	Continued	Continued	Continued	Continued	Continued	Continued	Continued
36	3.76°E 78.70 89	N44°E 10.80	Continued	Continued	Continued	Continued	Continued	Continued	Continued
37	3.76°E 87.70 90	N23°E 15.72	Continued	Continued	Continued	Continued	Continued	Continued	Continued
38	3.76°E 86.16 91	N35°E 5.69	Continued	Continued	Continued	Continued	Continued	Continued	Continued
39	3.76°E 185.67 92	N60°E 5.19	Continued	Continued	Continued	Continued	Continued	Continued	Continued
40	3.76°E 192.85 93	N15°E 7.75	Continued	Continued	Continued	Continued	Continued	Continued	Continued
41	3.76°E 39.35 94	N24°E 9.22	Continued	Continued	Continued	Continued	Continued	Continued	Continued
42	3.76°E 78.70 95	N44°E 10.80	Continued	Continued	Continued	Continued	Continued	Continued	Continued
43	3.76°E 87.70 96	N23°E 15.72	Continued	Continued	Continued	Continued	Continued	Continued	Continued
44	3.76°E 86.16 97	N35°E 5.69	Continued	Continued	Continued	Continued	Continued	Continued	Continued
45	3.76°E 185.67 98	N60°E 5.19	Continued	Continued	Continued	Continued	Continued	Continued	Continued
46	3.76°E 192.85 99	N15°E 7.75	Continued	Continued	Continued	Continued	Continued	Continued	Continued
47	3.76°E 39.35 100	N24°E 9.22	Continued	Continued	Continued	Continued	Continued	Continued	Continued
48	3.76°E 78.70 101	N44°E 10.80	Continued	Continued	Continued	Continued	Continued	Continued	Continued
49	3.76°E 87.70 102	N23°E 15.72	Continued	Continued	Continued	Continued	Continued	Continued	Continued
50	3.76°E 86.16 103	N35°E 5.69	Continued	Continued	Continued	Continued	Continued	Continued	Continued
51	3.76°E 185.67 104	N60°E 5.19	Continued	Continued	Continued	Continued	Continued	Continued	Continued
52	3.76°E 192.85 105	N15°E 7.75	Continued	Continued	Continued	Continued	Continued	Continued	Continued
53	3.76°E 39.35 106	N24°E 9.22	Continued	Continued	Continued	Continued	Continued	Continued	Continued
54	3.76°E 78.70 107	N44°E 10.80	Continued	Continued	Continued	Continued	Continued	Continued	Continued
55	3.76°E 87.70 108	N23°E 15.72	Continued	Continued	Continued	Continued	Continued	Continued	Continued
56	3.76°E 86.16 109	N35°E 5.69	Continued	Continued	Continued	Continued	Continued	Continued	Continued
57	3.76°E 185.67 110	N60°E 5.19	Continued	Continued	Continued	Continued	Continued	Continued	Continued
58	3.76°E 192.85 111	N15°E 7.75	Continued	Continued	Continued	Continued	Continued	Continued	Continued
59	3.76°E 39.35 112	N24°E 9.22	Continued	Continued	Continued	Continued	Continued	Continued	Continued
60	3.76°E 78.70 113	N44°E 10.80	Continued	Continued	Continued	Continued	Continued	Continued	Continued
61	3.76°E 87.70 114	N23°E 15.72	Continued	Continued	Continued	Continued	Continued	Continued	Continued
62	3.76°E 86.16 115	N35°E 5.69	Continued	Continued	Continued	Continued	Continued	Continued	Continued
63	3.76°E 185.67 116	N60°E 5.19	Continued	Continued	Continued	Continued	Continued	Continued	Continued
64	3.76°E 192.85 117	N15°E 7.75	Continued	Continued	Continued	Continued	Continued	Continued	Continued
65	3.76°E 39.35 118	N24°E 9.22	Continued	Continued	Continued	Continued	Continued	Continued	Continued
66	3.76°E 78.70 119	N44°E 10.80	Continued	Continued	Continued	Continued	Continued	Continued	Continued
67	3.76°E 87.70 120	N23°E 15.72	Continued	Continued	Continued	Continued	Continued	Continued	Continued
68	3.76°E 86.16 121	N35°E 5.69	Continued	Continued	Continued	Continued	Continued	Continued	Continued
69	3.76°E 185.67 122	N60°E 5.19	Continued	Continued	Continued	Continued	Continued	Continued	Continued
70	3.76°E 192.85 123	N15°E 7.75	Continued	Continued	Continued	Continued	Continued	Continued	Continued
71	3.76°E 39.35 124	N24°E 9.22	Continued	Continued	Continued	Continued	Continued	Continued	Continued
72	3.76°E 78.70 125	N44°E 10.80	Continued	Continued	Continued	Continued	Continued	Continued	Continued
73	3.76°E 87.70 126	N23°E 15.72	Continued	Continued	Continued	Continued	Continued	Continued	Continued
74	3.76°E 86.16 127	N35°E 5.69	Continued	Continued	Continued	Continued	Continued	Continued	Continued
75	3.76°E 185.67 128	N60°E 5.19	Continued	Continued	Continued	Continued	Continued	Continued	Continued
76	3.76°E 192.85 129	N15°E 7.75	Continued	Continued	Continued	Continued	Continued	Continued	Continued
77	3.76°E 39.35 130	N24°E 9.22	Continued	Continued	Continued	Continued	Continued	Continued	Continued
78	3.76°E 78.70 131	N44°E 10.80	Continued	Continued	Continued	Continued	Continued	Continued	Continued
79	3.76°E 87.70 132	N23°E 15.72	Continued	Continued	Continued	Continued	Continued	Continued	Continued
80	3.76°E 86.16 133	N35°E 5.69	Continued	Continued	Continued	Continued	Continued	Continued	Continued
81	3.76°E 185.67 134	N60°E 5.19	Continued	Continued	Continued	Continued	Continued	Continued	Continued
82	3.76°E 192.85 135	N15°E 7.75	Continued	Continued	Continued	Continued	Continued	Continued	Continued
83	3.76°E 39.35 136	N24°E 9.22	Continued	Continued	Continued	Continued	Continued	Continued	Continued
84	3.76°E 78.70 137	N44°E 10.80	Continued	Continued	Continued	Continued	Continued	Continued	Continued
85	3.76°E 87.70 138	N23°E 15.72	Continued	Continued	Continued	Continued	Continued	Continued	Continued
86	3.76°E 86.16 139	N35°E 5.69	Continued	Continued	Continued	Continued	Continued	Continued	Continued
87	3.76°E 185.67 140	N60°E 5.19	Continued	Continued	Continued	Continued	Continued	Continued	Continued
88	3.76°E 192.85 141	N15°E 7.75	Continued	Continued	Continued	Continued	Continued	Continued	Continued
89	3.76°E 39.35 142	N24°E 9.22	Continued	Continued	Continued	Continued	Continued	Continued	Continued
90	3.76°E 78.70 143	N44°E 10.80	Continued	Continued	Continued	Continued	Continued	Continued	Continued
91	3.76°E 87.70 144	N23°E 15.72	Continued	Continued	Continued	Continued	Continued	Continued	Continued
92	3.76°E 86.16 145	N35°E 5.69	Continued	Continued	Continued	Continued	Continued	Continued	Continued
93	3.76°E 185.67 146	N60°E 5.19	Continued	Continued	Continued	Continued	Continued	Continued	Continued
94	3.76°E 192.85 147	N15°E 7.75	Continued	Continued	Continued	Continued	Continued	Continued	Continued
95	3.76°E 39.35 148	N24°E 9.22	Continued	Continued	Continued	Continued	Continued	Continued	Continued
96	3.76°E 78.70 149	N44°E 10.80	Continued	Continued	Continued	Continued	Continued	Continued	Continued
97	3.76°E 87.70 150	N23°E 15.72	Continued	Continued	Continued	Continued	Continued	Continued	Continued
98	3.76°E 86.16 151	N35°E 5.69	Continued	Continued	Continued	Continued	Continued	Continued	Continued
99	3.76°E 185.67 152	N60°E 5.19	Continued	Continued	Continued	Continued	Continued	Continued	Continued
100	3.76°E 192.85 153	N15°E 7.75	Continued	Continued	Continued	Continued	Continued	Continued	Continued

C.F. 145

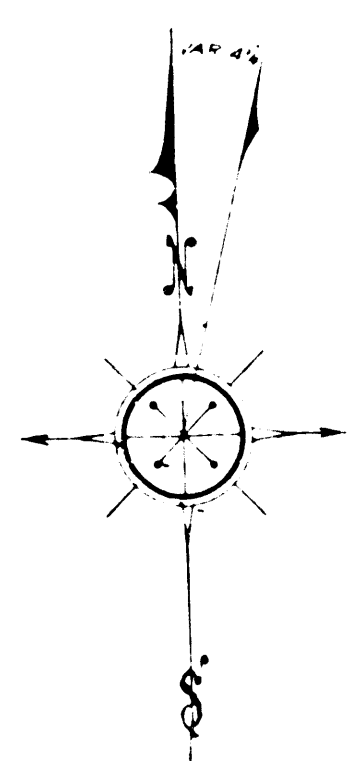


MAP
 OF THAT PART OF THE
RANCHO SAN PEDRO

IN THE COUNTY OF LOS ANGELES CALIFORNIA

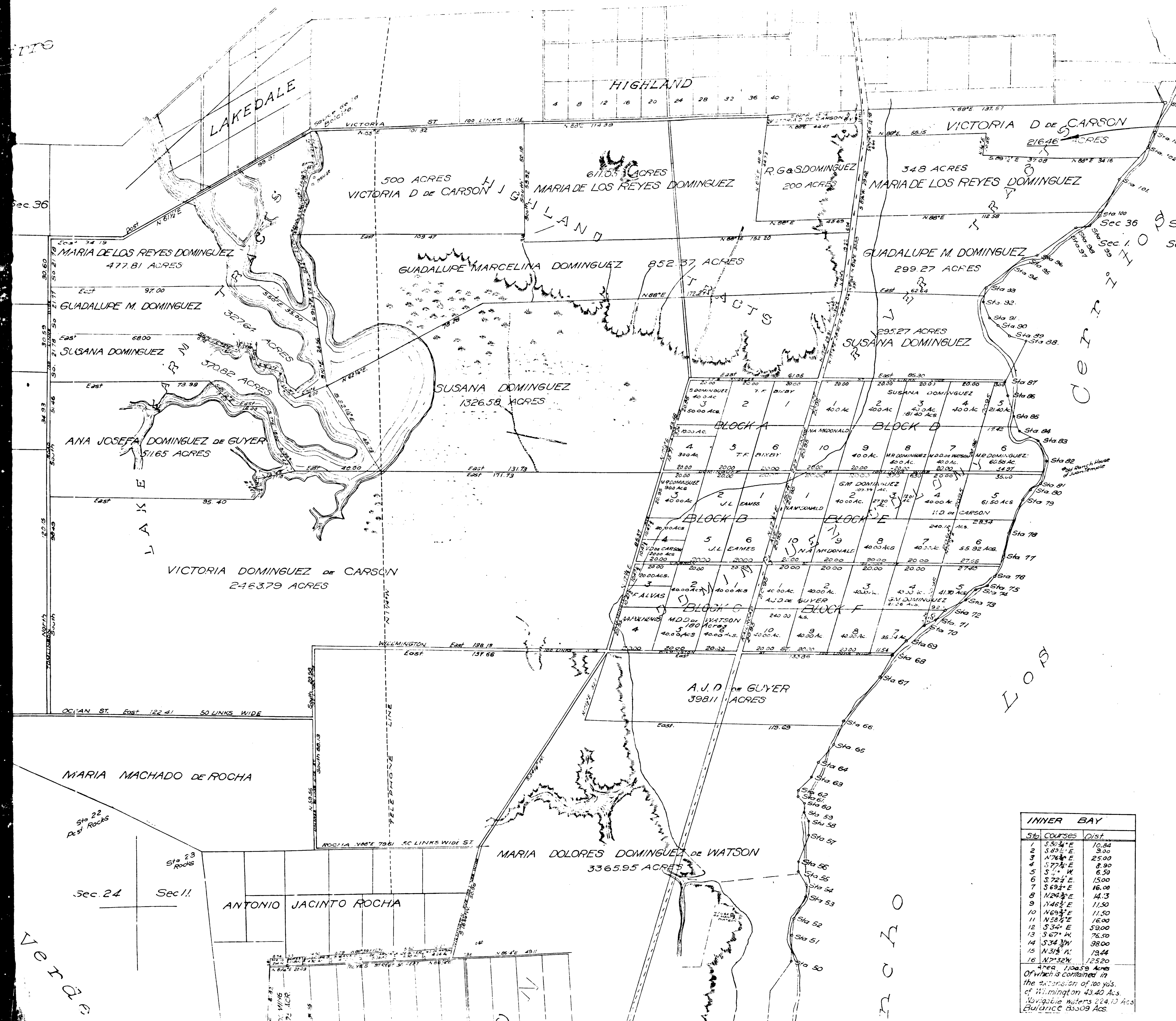
WHICH WAS ALLOTTED TO

MANUEL DOMINGUEZ



3
 C.F. 145 -

Verde



Note: This parcel is shown 261.46 Acres in tables on this map, which is approximately correct. In calculation, the final acres of partition calls for 216.46 Acres. Use 216.46 for legal description.

JOSE L. SALAZAR
6-18-35

Sec. 31. T. 3. S. R. 12 W
Sec. 6. T. 4. S. R. 12 W

INNER BAY		
Sta	COURSE	Dist
1	S 80 3/4° E	10.84
2	S 89 1/2° E	9.00
3	N 76 3/4° E	25.00
4	S 77 1/2° E	6.90
5	S 74° W	6.50
6	S 72 1/2° E	15.00
7	S 69 1/2° E	16.00
8	N 24 3/4° E	14.3
9	N 46 3/4° E	11.50
10	N 69 3/4° E	11.50
11	N 58 1/2° E	16.00
12	S 34° E	59.00
13	S 67° W	76.50
14	S 34 3/4° W	98.00
15	N 31 1/2° N	13.44
16	N 7 3/4° N	125.20

Area 710.50 Acres
Of which is contained in
the extension of 100 yds.
of Wilmington 43.40 Ac.
Navigable Waters 224.10 Ac.
Guidance 630.9 Ac.

4
C.F. 145 -

Victoria

Machado