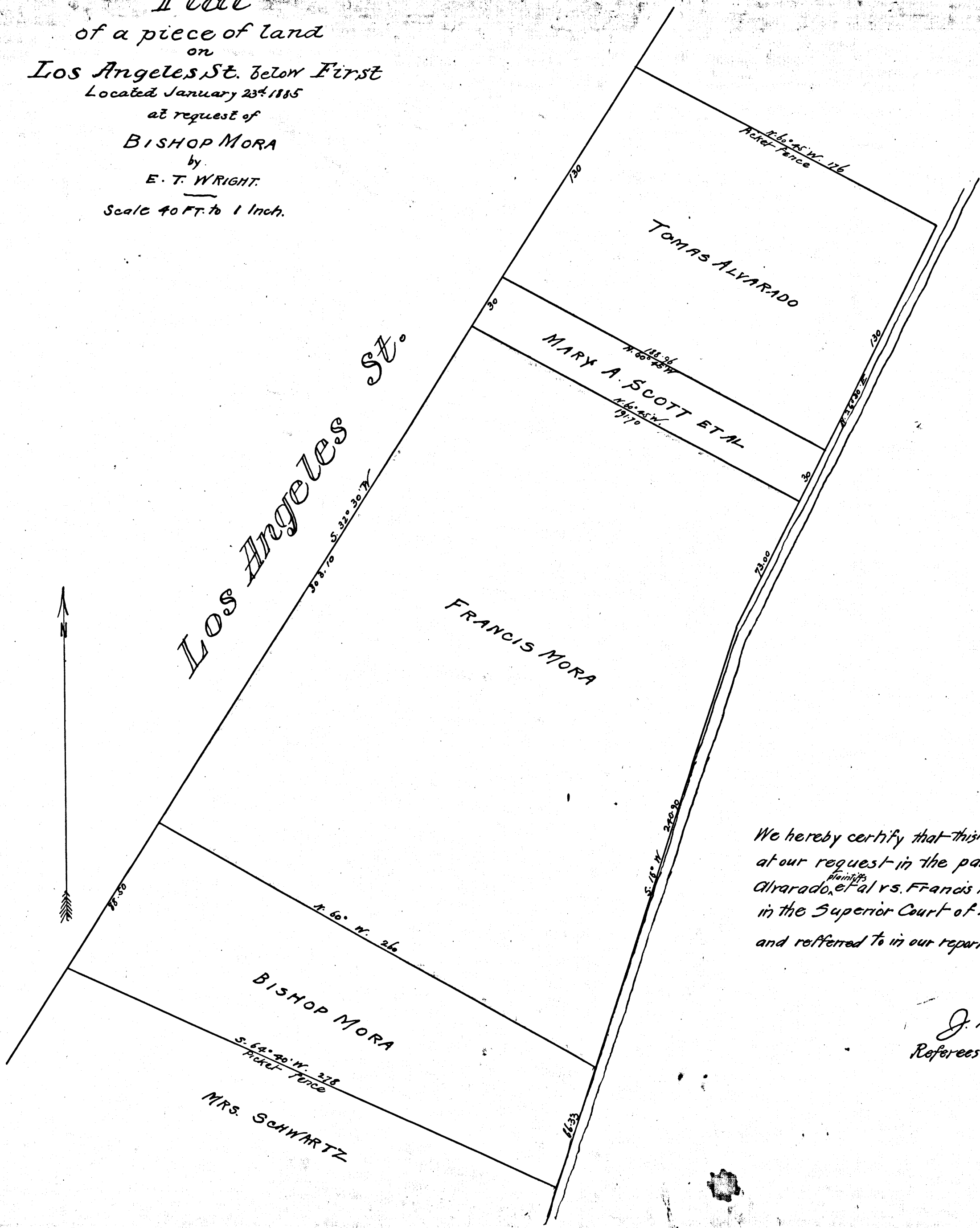


Plot  
 of a piece of land  
 on  
 Los Angeles St. below First  
 Located January 23<sup>d</sup> 1885  
 at request of  
 BISHOP MORA  
 by  
 E. T. WRIGHT.  
 Scale 40 FT. to 1 Inch.



We hereby certify that this is the plat of Survey made  
 at our request in the partition suit of Tomas  
 Alvarado, et al vs. Francis Mora et al, defendants,  
 in the Superior Court of Los Angeles County,  
 and referred to in our report.

Juan de Toro  
 James C. Kaye  
 J. H. Wolfstill  
 Referees in Partition.

C.F. 147