

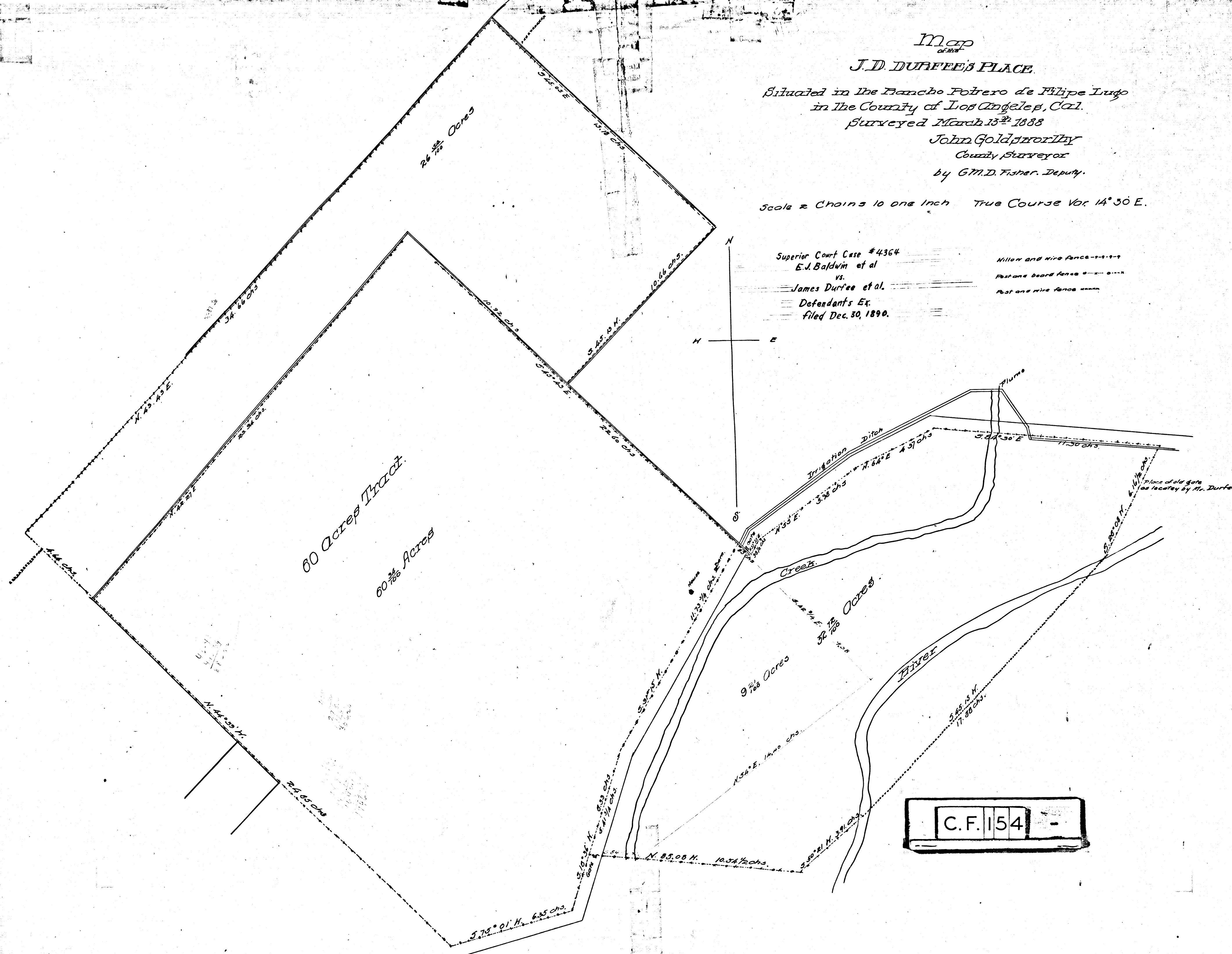
Map
of
J.D. DURFEE'S PLACE.

Situated in the Rancho Potrero de Felipe Lugo
in the County of Los Angeles, Cal.
Surveyed March 13th 1888
John Goldworthy
County Surveyor
by G.M.D. Fisher, Deputy.

Scale = Chains to one Inch True Course Var 14° 30' E.

Superior Court Case #4364
E.J. Baldwin et al
vs.
James Durfee et al.
Defendants Ex.
filed Dec. 30, 1890.

Millon and wire fence - - - - -
Pasture board fence - - - - -
Post and wire fence - - - - -



C.F. 154