

Map showing the Patent lines of the Colima Tract in Rancho Santa Gertrudes

also
the Lines as per Partition Survey in Case No. of E. Acuña
et al vs Nicolas S. Colima et al; In the 17th Judicial District
Court in and for Los Angeles County California also the
Map of the François Buchard Tract being a portion of said
Rancho Santa Gertrudes

Note
"Black" boundary line indicates Patent boundary of Colima Tract - per Reynolds and Wright Decree changed it. See C.F. 156 and C.S.
"Red" boundary line indicates Partition boundary of Colima Tract - per 17th Dist. court No. 2542.
"Blue" boundary line indicates boundary of François Buchard Tract - per Reynolds and Wright Decree changed it. See C.F. 156 and C.S.

Scale 20 chains to one inch

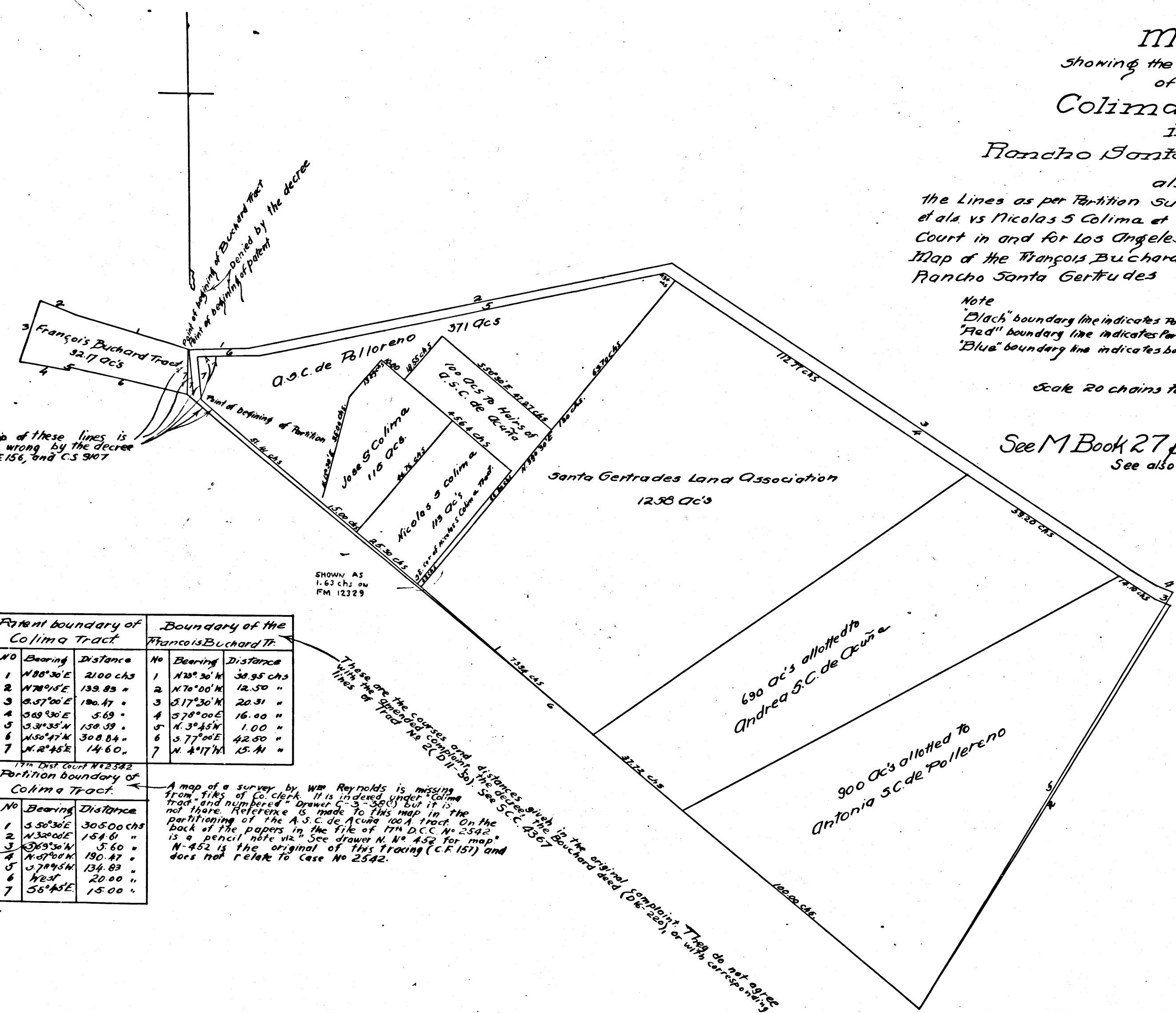
See M Book 27 pages 238 to 245
See also ~~5-2329~~ FM-12329

Surveyed by T. Kardos, Oct 1867
Classified by R.J. Black.

SUPERIOR COURT CASE NO. 4367
CLERKS FILED MAP NO. 157

(Endorsed.)
4367
Buchard vs Heilner et al.
Pet. Ex. No 3
filed June 3 1886
Chas H. Dunsmead Clerk
by G.M. Hamilton Deputy.

C.F. 157



The relationship of these lines is
declared to be wrong by the decree
See C.F. 155, C.F. 156, and C.S. 3907

SHOWN AS
1.63 chs on
FM 12329

| Patent boundary of Colima Tract | | Boundary of the François Buchard Tr. | |
|---------------------------------|-----------------------|--------------------------------------|-----------------------|
| No | Bearing Distance | No | Bearing Distance |
| 1 | N 88° 30' E 21.00 chs | 1 | N 28° 30' W 38.95 chs |
| 2 | N 70° 15' E 139.83 " | 2 | N 70° 00' W 12.50 " |
| 3 | S 57° 30' E 180.47 " | 3 | S 17° 30' W 20.31 " |
| 4 | S 69° 30' E 5.69 " | 4 | S 78° 00' E 16.00 " |
| 5 | S 31° 35' W 130.59 " | 5 | N 3° 45' N 1.00 " |
| 6 | N 50° 47' W 308.84 " | 6 | S 77° 00' E 42.50 " |
| 7 | N 2° 45' E 14.60 " | 7 | N 4° 17' W 15.41 " |

17th Dist. Court No. 2542
Partition boundary of Colima Tract.

| No | Bearing | Distance |
|----|-------------|------------|
| 1 | S 50° 30' E | 305.00 chs |
| 2 | N 32° 00' E | 154.61 " |
| 3 | S 69° 30' W | 5.60 " |
| 4 | N 67° 00' W | 190.47 " |
| 5 | S 78° 45' W | 134.83 " |
| 6 | N 2° 45' E | 20.00 " |
| 7 | S 6° 45' E | 15.00 " |

A map of a survey by Wm Reynolds is missing from files of Co. Clerk. It is indexed under Colima tract, and numbered "Drawer C-3-3500" but it is not there. Reference is made to this map in the partitioning of the A.S.C. de Acuña 100 A tract. On the back of the papers in the file of 17th D.C.C. No. 2542 is a pencil note viz. "See drawing N. No. 452 for map. N-452 is the original of this tracing (C.F. 157) and does not relate to Case No. 2542."

These are the courses and distances given in the original complaint Tracy et al vs Heilner et al with corresponding lines of Tract No. 2542 (C.F. 157).