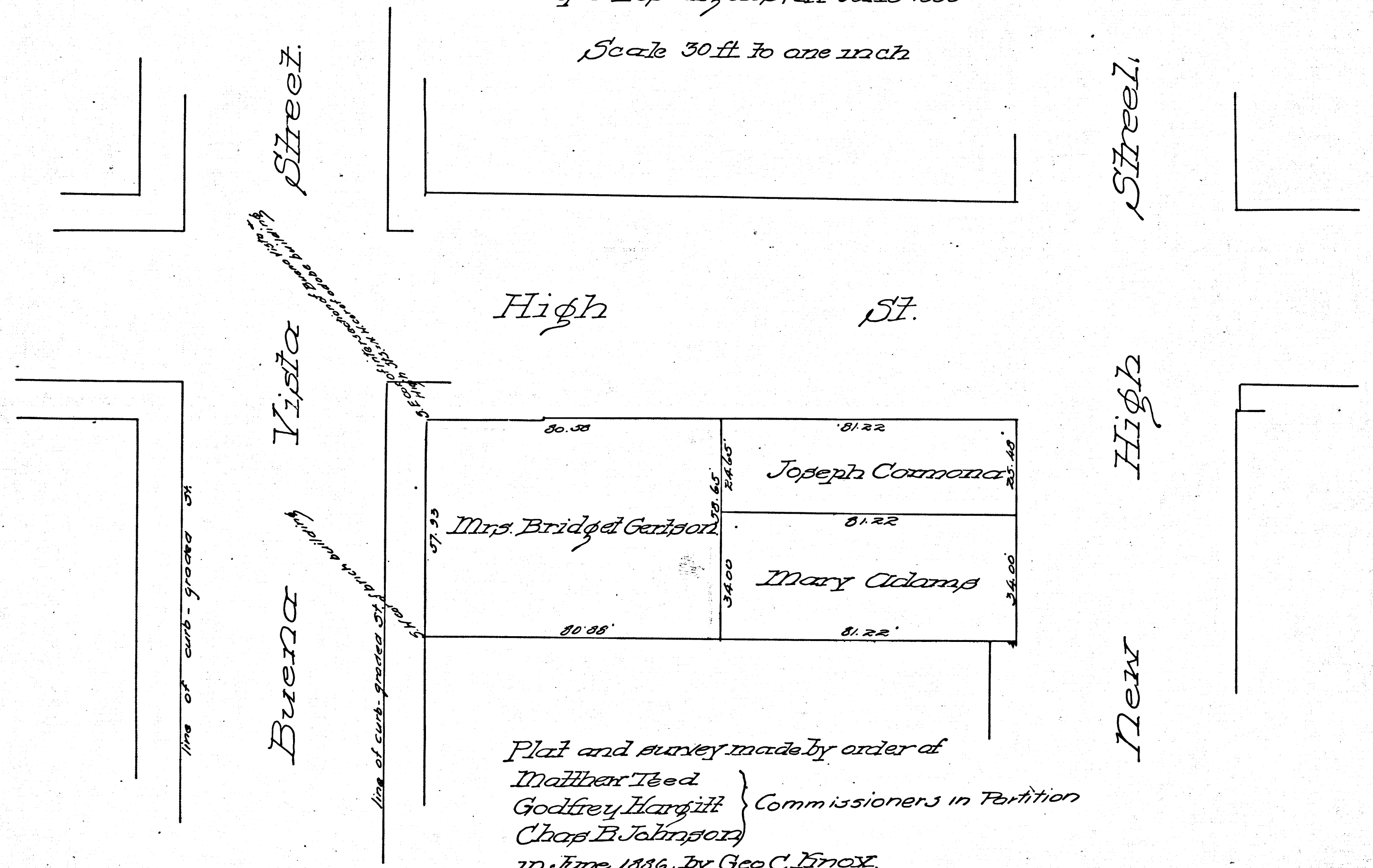


MEMCO

Plat
of
North half of Lot 10 Block 31, Ord's Survey.
showing
the partition made thereof by order of the Hon
Superior Court of the State of California in and for
the County of Los Angeles; in June 1886

Scale 30 ft to one inch



C.F. 158

MEMCO
PASADENA, CAL.

LS 6

10TH

14 16 18 20 22 24 26 28 30 32 34 36 38 40 42 44 46 48 50 52 54 56 58 60 62 64 66 68 70 72 74 76 78 80 82 84 86