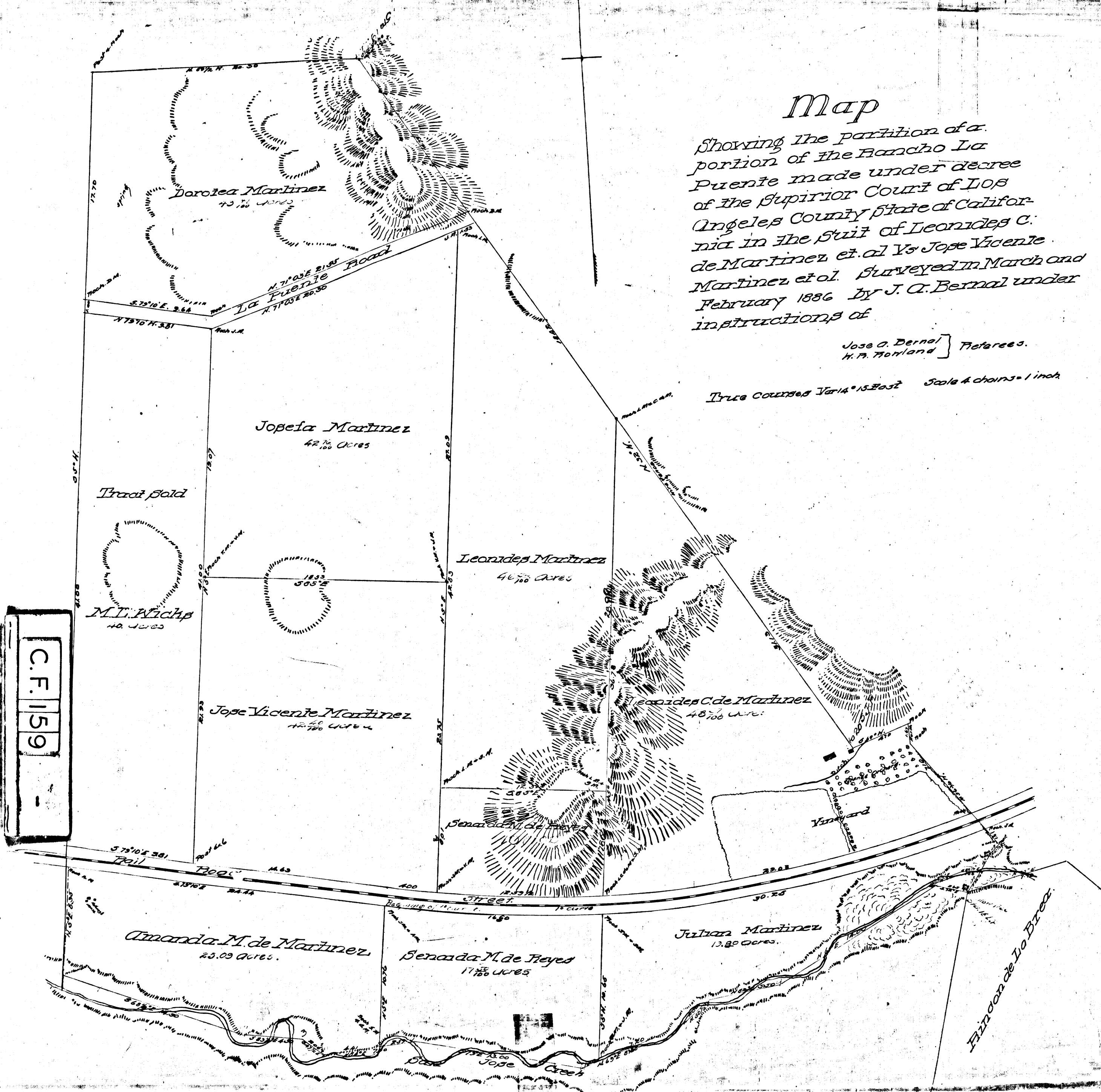


Map

Showing the partition of a portion of the Rancho La Puente made under decree of the Superior Court of Los Angeles County State of California in the suit of Leonides C. de Martinez et al Vs Jose Vicente Martinez et al. Surveyed in March and February 1886 by J. A. Bernal under instructions of

Jose A. Bernal } Referees.
H. P. Howland }

True Course $\gamma = 153^{\circ} 05'$ Scale & chains = 1 inch



C.F. 1159

Filed April 3, 1886