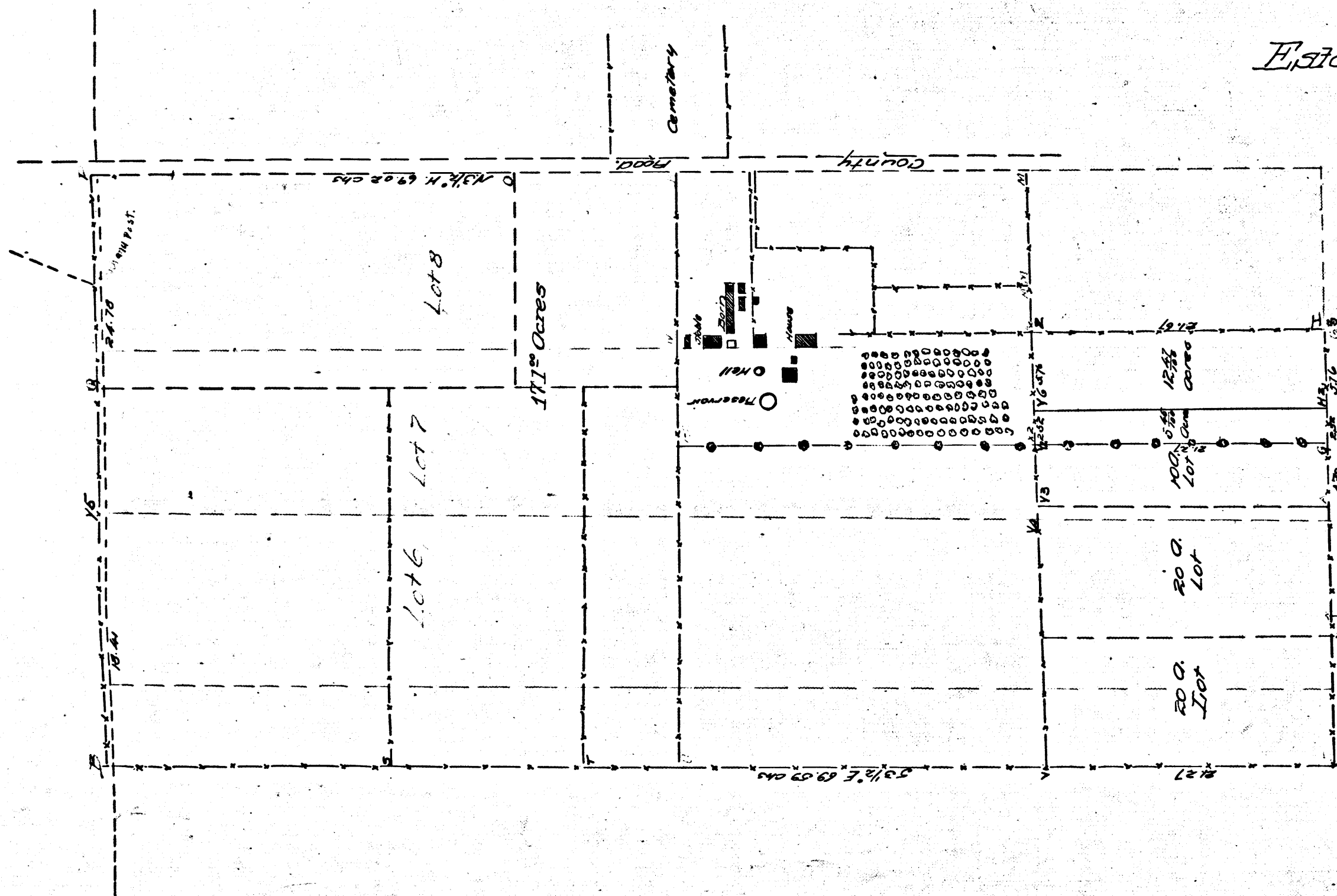


Map
of
Property in Wilmington
belonging to the
Estate of Gen Phineas Banning deceased
Surveyed in Nov & Dec 1886 by Charles T. Healey

Scale 10 chains to one inch.

Deed for Canal St through lot E D: 9-206 D: 3256-211
Canal Ave. changed to Avalon Blvd. Ord. 55530



C.F. 161

Filed Oct 4, 1887
Recorded Oct 6, 1887