

MAP
 Showing the Partition of
 the Estate of Ygnacio Luño Dec'd.
 in the City of Los Angeles Cal.
 as Surveyed in October 9th 1888

J. A. Bernal Surveyor
 and Sole Referee

Santo Cruz

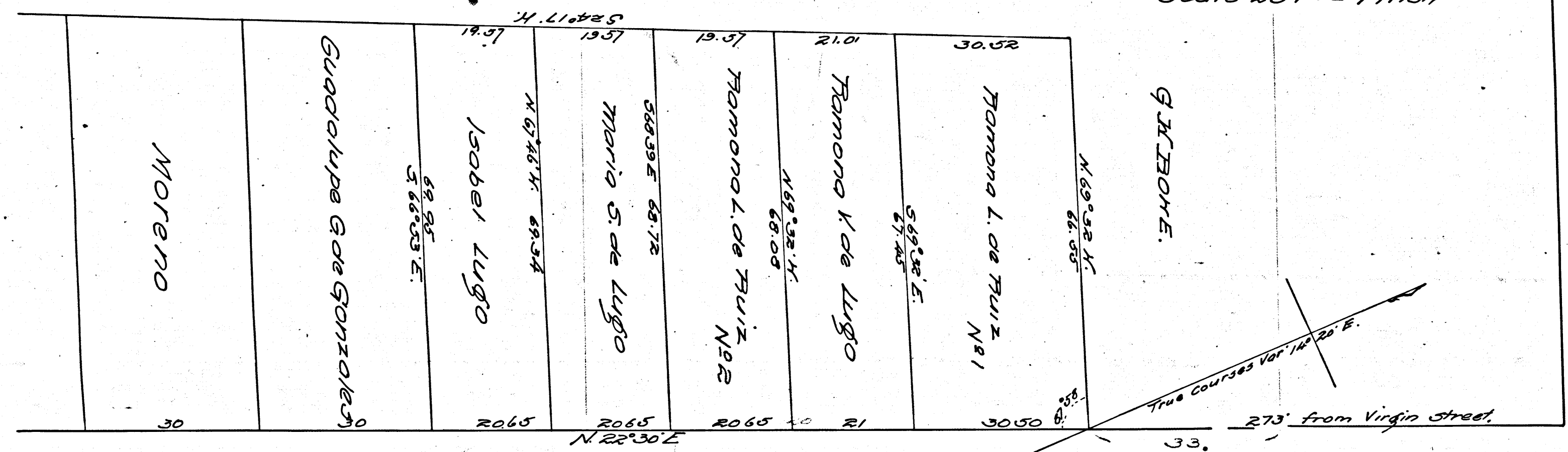
Ortiz

Ocaña

Lot 9
 Ord's Survey Blk 33

Lot 10

Scale 20 ft. = 1 inch



Virgin Street.

New High Street.

C.F. 164

Filed Nov. 8. 1888.

