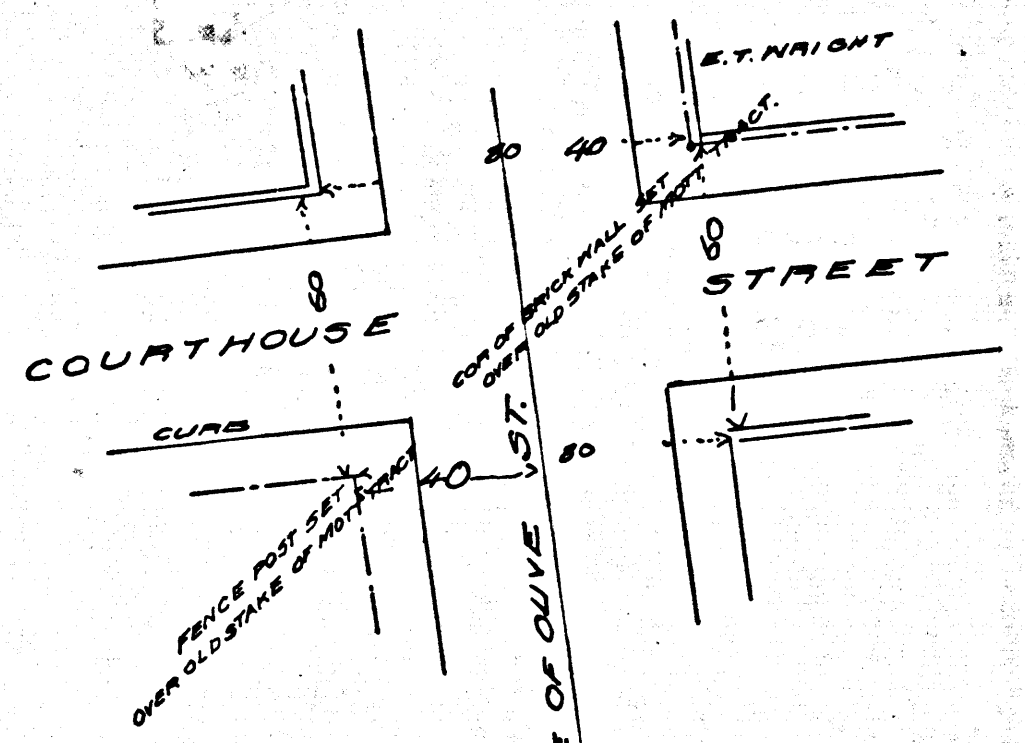


1166-16 FROM S.W. COR. FORT ST. TO COR. OF FENCE OF SEPHARD & CHARITY ST
 156.36 S.E. COR. OF CHARITY ST as given by recorded Map of MOTT TROOP.

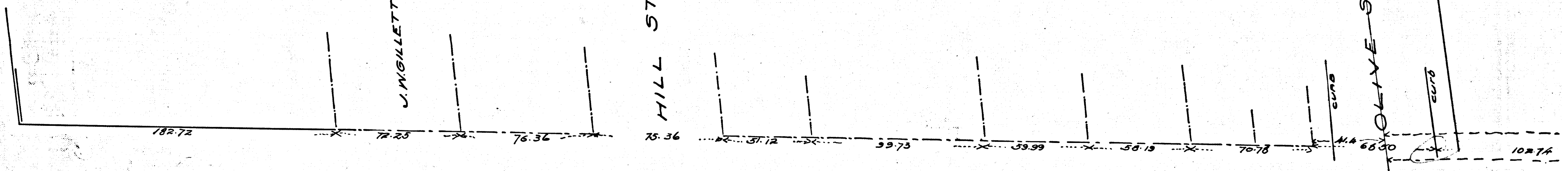


FORT ST.

J. NGILLETTE

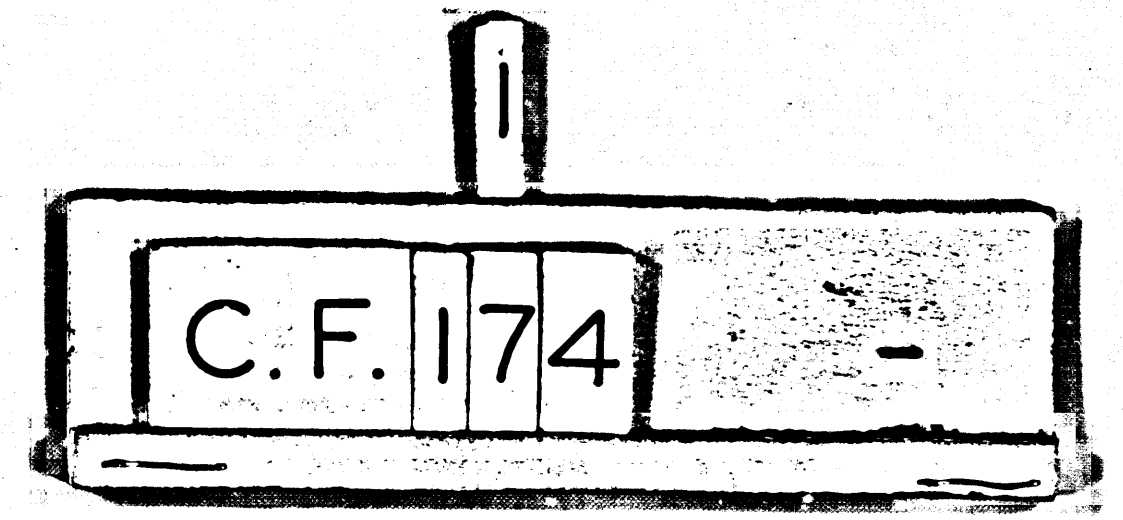
HILL ST

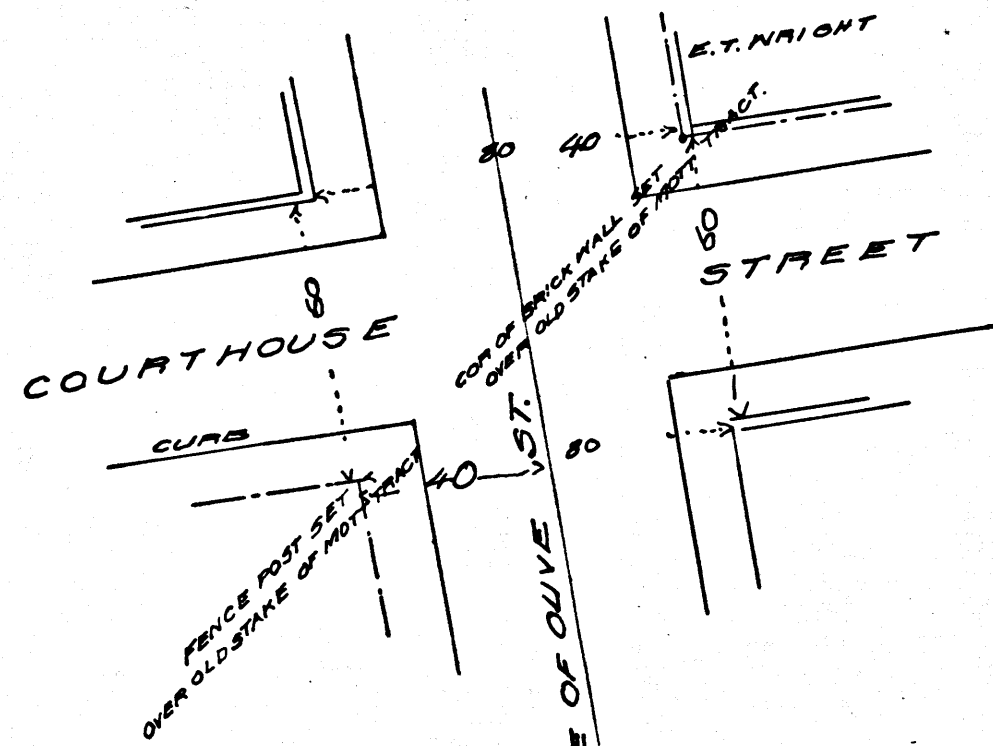
OLIVE ST N. 37° 30' E. CENTER LINE OF CURVE



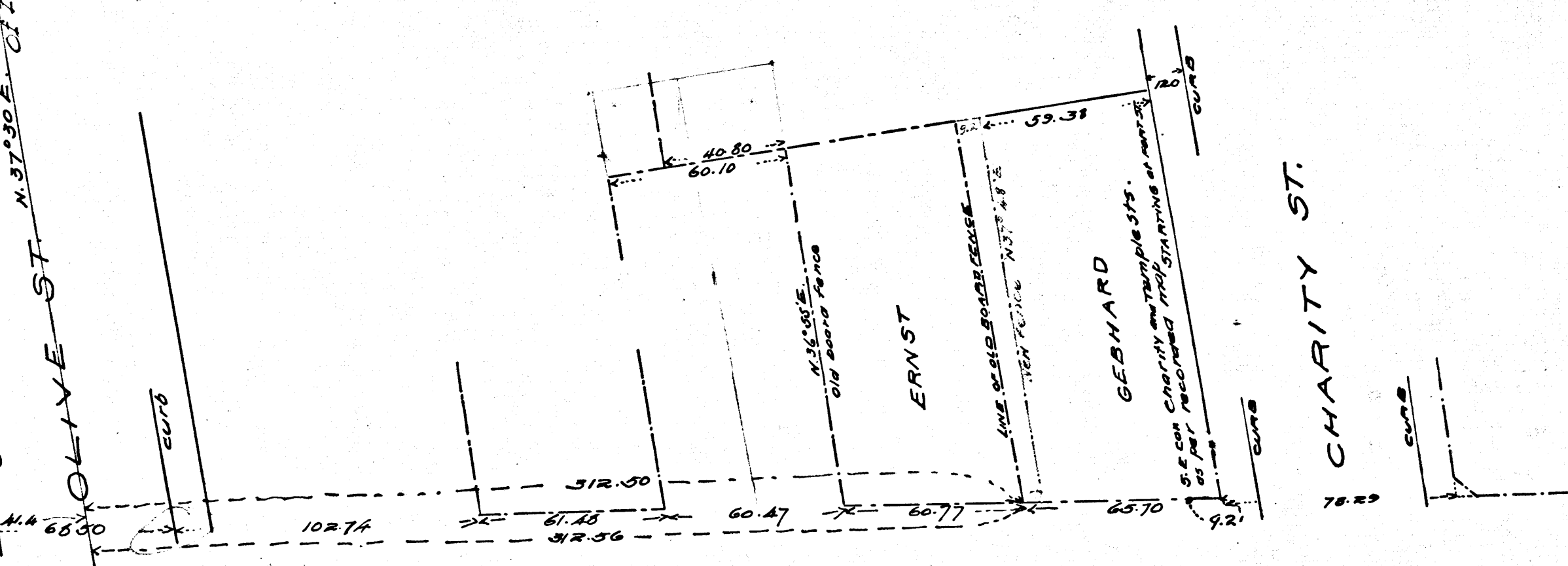
TEMPLE STREET N. 44° 44' N.

CEMETERY AV.





TEMPLE STREET N. 44° 44' N.



2
C.F. 174

Filed Nov 4, 1887

