



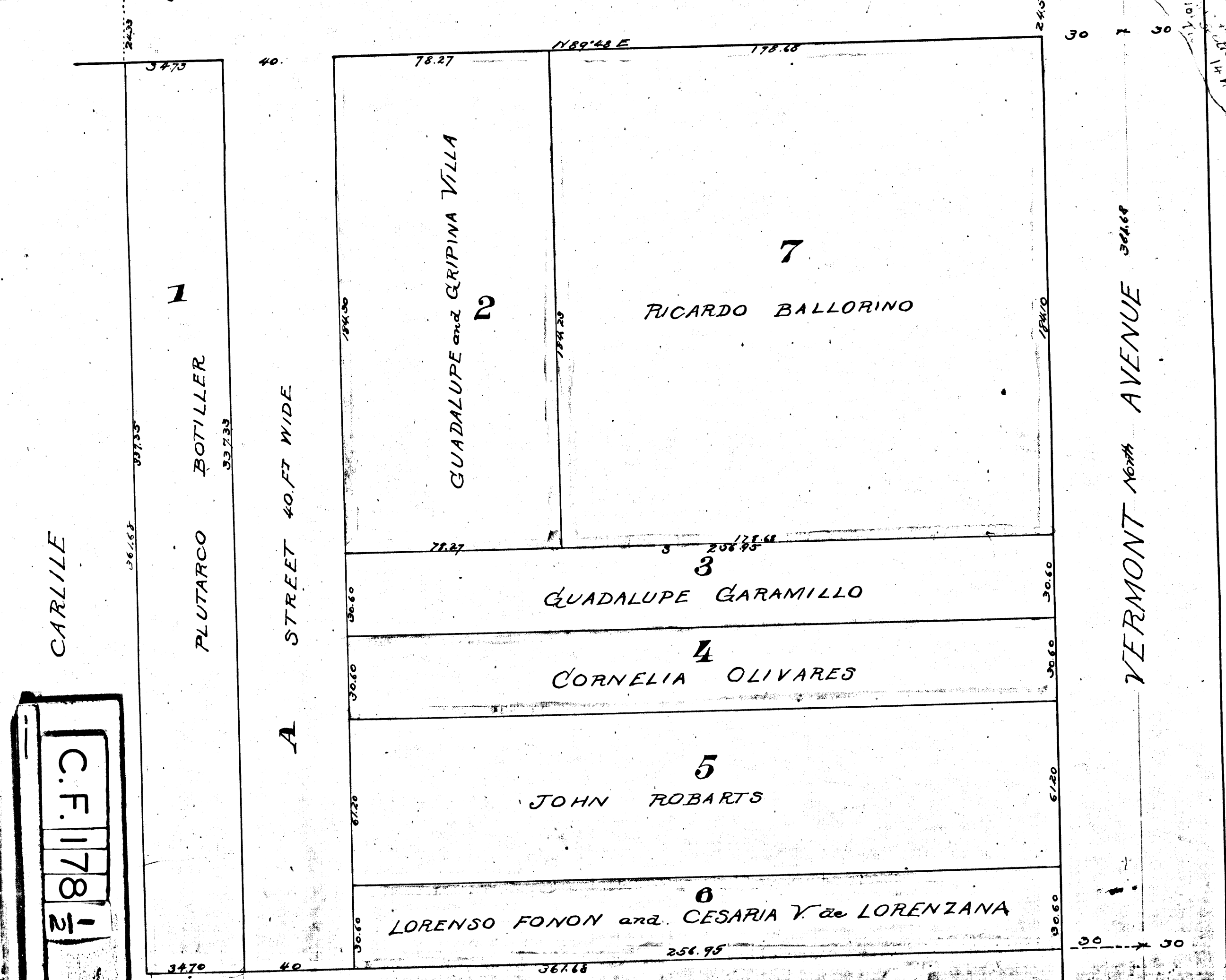
MAP

*of the Partition of the
Isabela Moreno Tract
by order of Court in the
matter of the Estate of
Isabela Moreno Deceased
Situate in the N.E. Corner of the
S.E. 1/4 of the S.E. 1/4 of Section
25 T1S R14W S.B.M.*

*Surveyed in Nov. 1888
by J.A. Bernal
Surveyor and Sale Commissioner.*

ELECTRIC TRACT

ELEVENTH STREET



C.F. 178 1/2

*Opening of New Hampshire St. D. 11-181 } C.R.
D. 3540-189
For condemned for Vermont Ave C.F. 1423.
New Hampshire St. chg. to New Hampshire Ave. Ord. 69066.*

