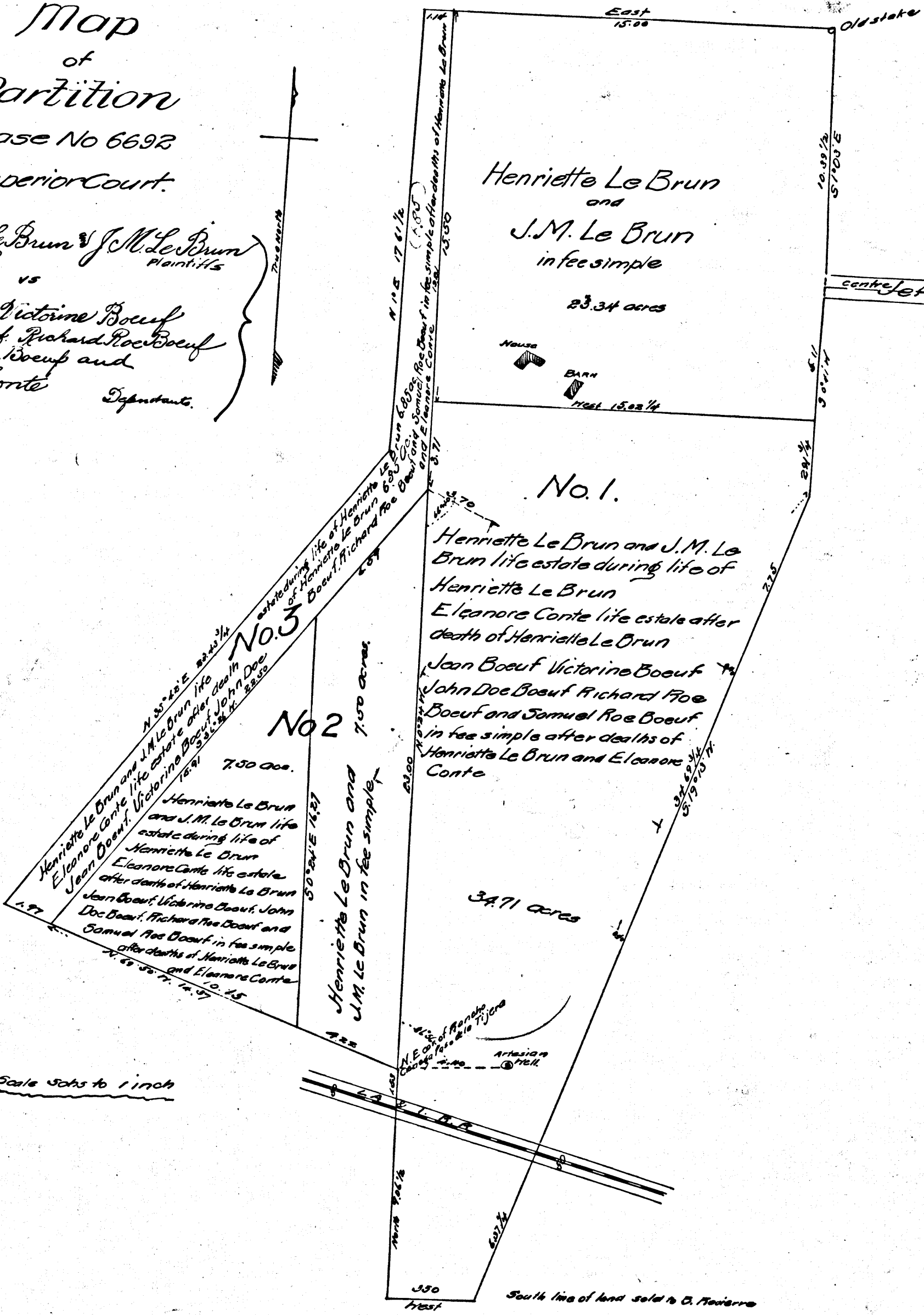


Map
of
Partition
in Case No 6692
Superior Court.

Henriette Le Brun & J.M. Le Brun
Plaintiffs
vs
Jean Boeuf, Victoire Boeuf,
John Doe Boeuf, Richard Roe Boeuf,
Samuel Roe Boeuf and
Eleanor Conte
Defendants.



Scale 50ths to 1 inch

C.F. 180 1/2

2700
1350
45