

Map
 Made for the use of referees appointed by
 decree of the Superior Court of the State of Cal.
 -ifornia for the County of Los Angeles bearing date
 3d Dec. 1887. for the purpose of partitioning the real
 -ty therein described. Said map shows the subdiv-
 -isions of Vineyards properly fronting on the
 North line of Seventh St. in the City of Los Angeles.

Scale 50 ft. = one inch. True Courses.
 John M. Baldwin, Surveyor.

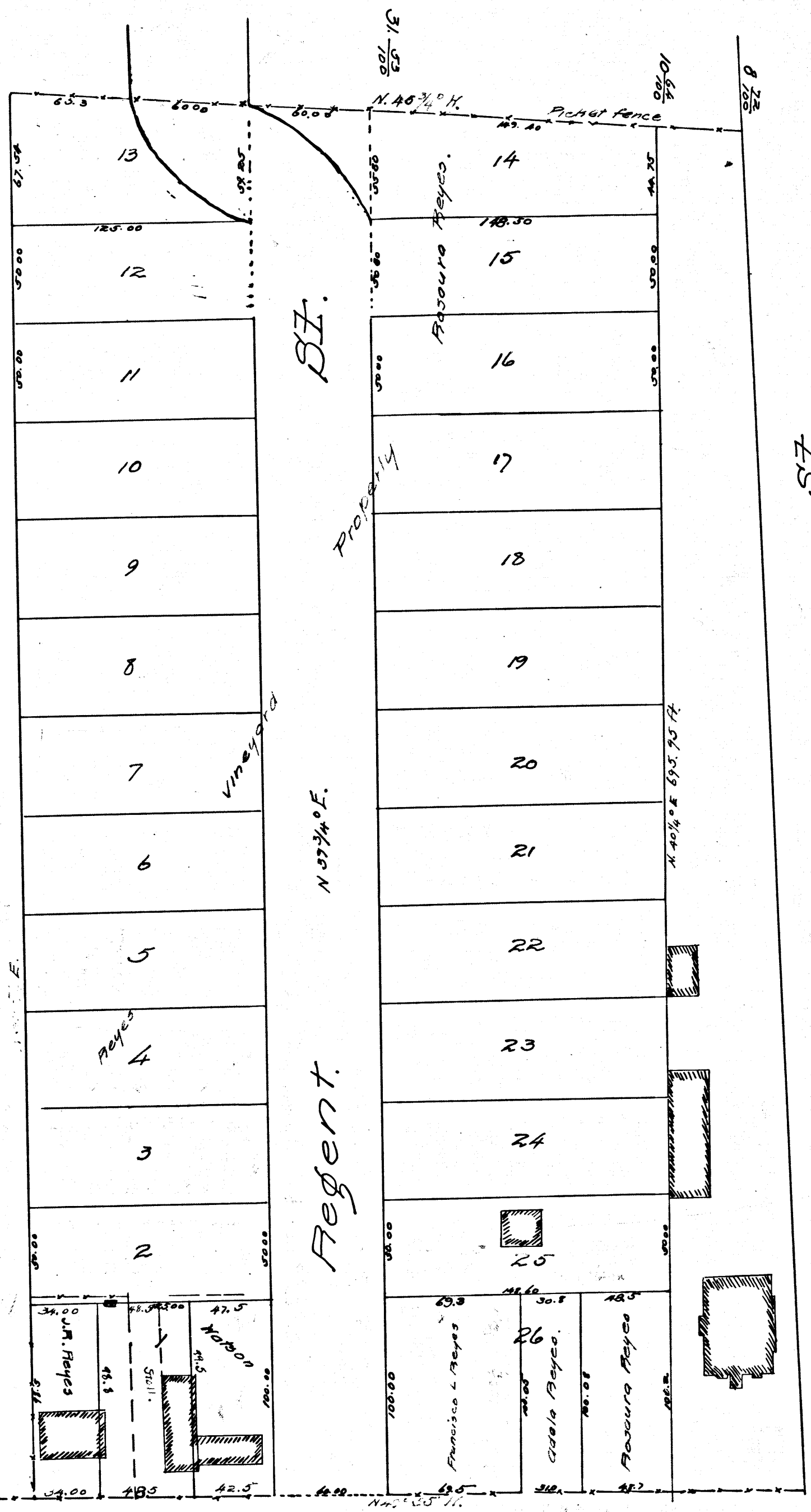
This map has prepared for us as above stated
 Referees.

T. E. Froman.
 John P. Moran.
 John M. Baldwin

180
 C.F. 180
 See Case 6638 Records Superior
 Court of Cal. mand. for Los Angeles Co
 Pet. by Jo. Dominguez de Reyes P.H.F.
 vs.
 Francisco Leon Reyes et al. Defts.

Los Angeles St.

Seventh



St.

C.F. 180

*Francisco Leon Reyes
 Petitioner vs. 3 Defendants*

957

VEMCO

107M

VEMCO

957