

# Map OF THE Denison Tract.

Los Angeles City Cal.

Surveyed in October & November 1887 by J.H. Doehreiler.

Scale - 100 feet to one inch.

Mary Ann  
Mrs M.A. Denison, Pff.  
Block G. Lots 9, 10, 11, 8, South 1/2 of 7  
" B. " 12, 13, 12, 9, 10, 11, 20, 21, 22, 19  
" C. " 13, 4, 5, 10, 11, 12  
" D. " 3, 4, 5, 7, 8, 10, 11, 19, 20, 21, 17.

Francis Edgar  
F.E. Denison, Deft.  
Block G Lots 1, South 1/2 of 5  
" B " 8, 18  
" C " 8  
" D " 13, 9

Henry Morgan  
H.M. Denison Deft.  
Block G. Lots 3 North 1/2 of 5  
" B " 4, 15  
" C " 9  
" D " 2, 16

Sarah  
S.J. Denison, Deft.  
Block G. Lots 2  
" B " 7, 16 South 1/2 of 6  
" C " 6  
" D " 1, 15.

Susan May  
S.M. Denison, Deft.  
Block A. Lots 4  
" B " 14, 5, North 1/2 of 6  
" C " 7  
" D " 12, 18.

M. Lawrence  
M.L. Denison, Deft.  
Block O Lots 6 North 1/2 of 7  
" B " 13, 17  
" C " 2  
" D " 6, 14.

G.F. 185.  
S.C.C. 7030.

Mary Ann Denison,  
vs.  
Francis E. Denison et al.

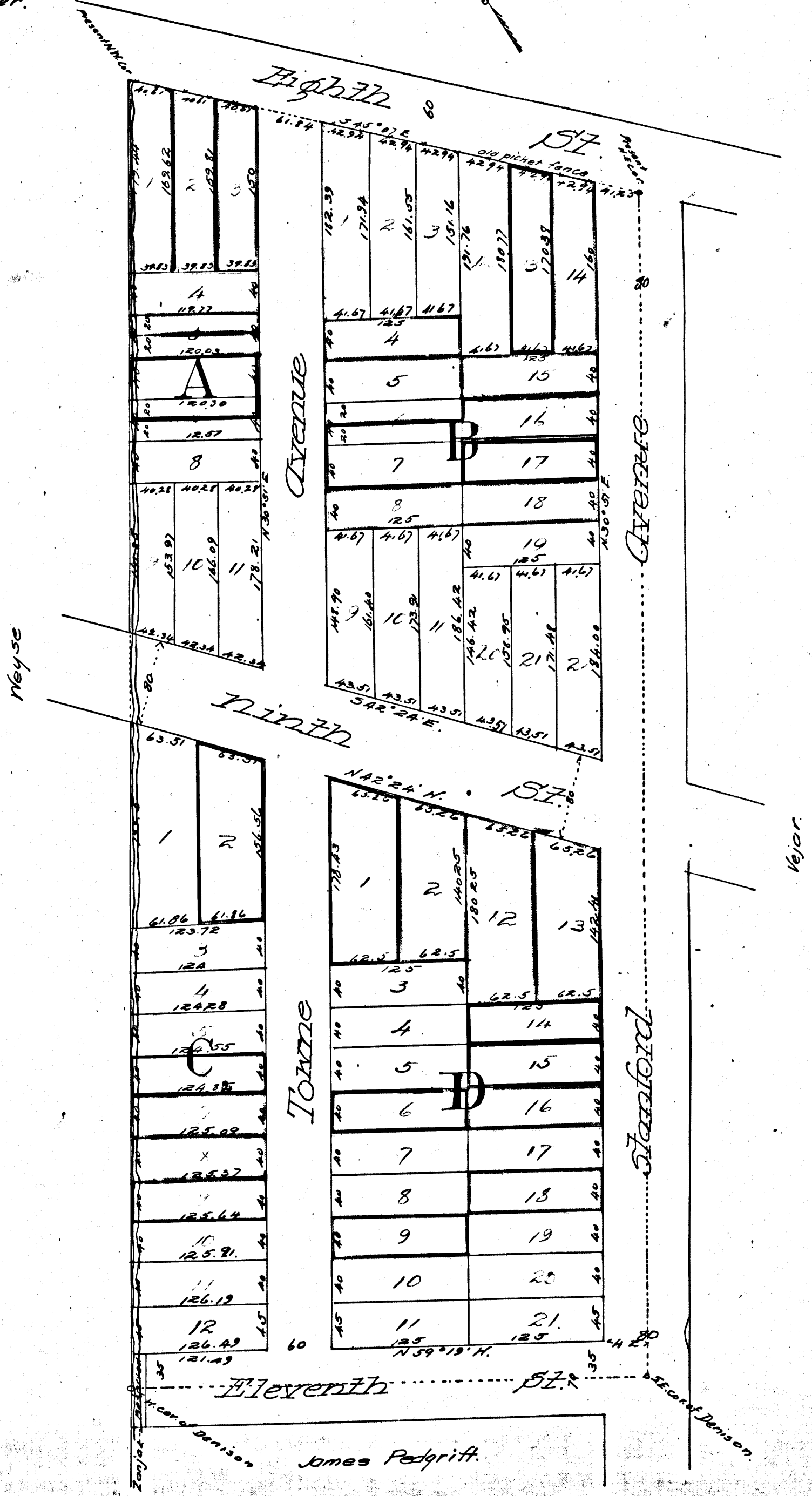
Partition.

Final Jdgt. of Partition, May 2, 1888.

" " Book 8, 341

" " as per this map noted in brown.

C.F. 185



Filed May 8, 1888.