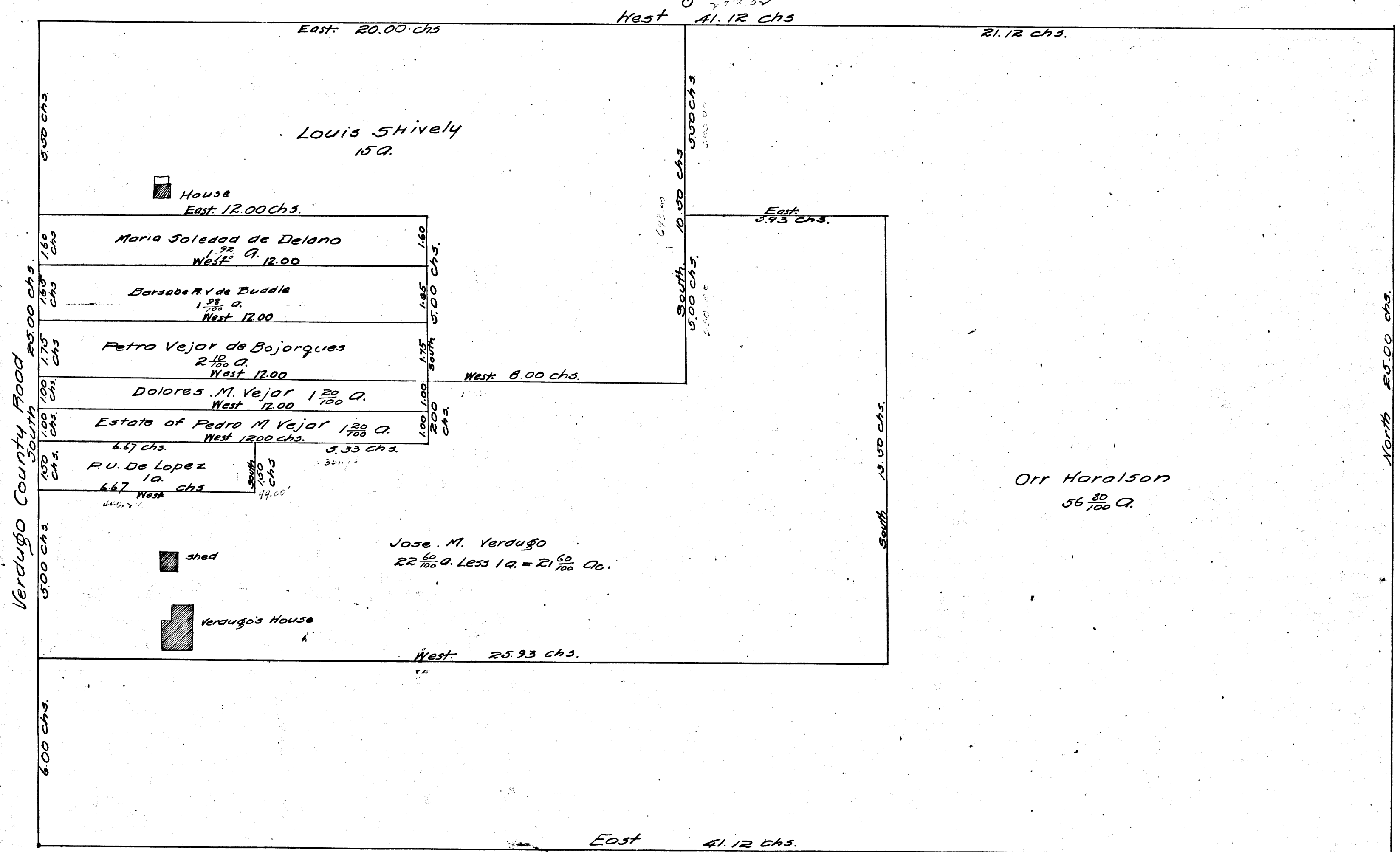


SUPPLEMENTAL MAP
 Of the Julio Verdugo 102⁸⁰/₁₀₀ a. of Land in the Rancho
 San Rafael Los Angeles County California
 Accompanying Report of Referee in
 Partition in Case 7054 entitled Orr Haralson vs.
 M.S. De Delano et al. in the Superior Court of
 Los Angeles County California under Decree
 Dated January 5th 1889.

C.F. 186.
 S.C.C. 7054,
 Orr Haralson
 vs
 M.S. de Delano et al.
 Partitioned.
 Final Adjt. for Plff.
 " " Jan. 25, 1890.
 " " Book 18-30.
 By this map as noted in brown.

Scale
 2 chains to One inch



C.F. 186

Filed Mar. 4, 1890.

VEMCO
 PASADENA, CALIF.

957

107M

M.L.O.S.