

10TH 957

MEMCO

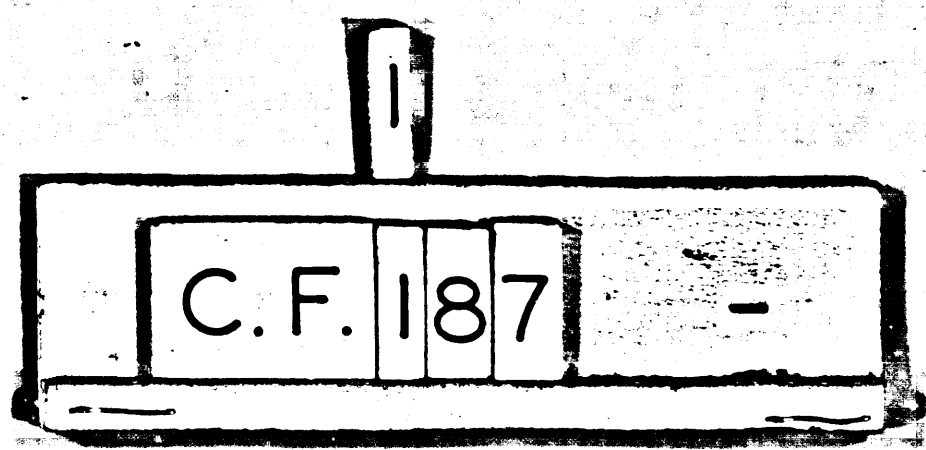
Pastura Land of Jacinto Talamantes.

3th 3^d of Exterior Boundaries of Rancho La Ballona

Rita Ruiz de Belmal
34th Acres
LOT 24

9.51	9.51	9.51
LOT 23	LOT 22	LOT 21
NINFATALAMANTES	Esarria Talamantes	Destino Talamantes
580 Acres	500 Acres	5.00
9.51	9.51	9.51
S. 33° E. 186.00		
N. 33° W. 186.00		

NOTE:
The descriptions of the lots shown hereon, as set out in the decree of partition and in T1 & T2 guarantees, establish the lot lines as shown hereon in black. Said decree reserves therefrom a strip of land 0.25 ch wide by — in length on the (SW'y, NE'y, etc) side of said lot for "public purposes". Said roads were accepted and declared public highways by blanket resolutions entered in Road Books 2-608; 4-526; 5-353; 16-105 (see D-27-16) there being no further dedication.
County Surveyor
9-19-25

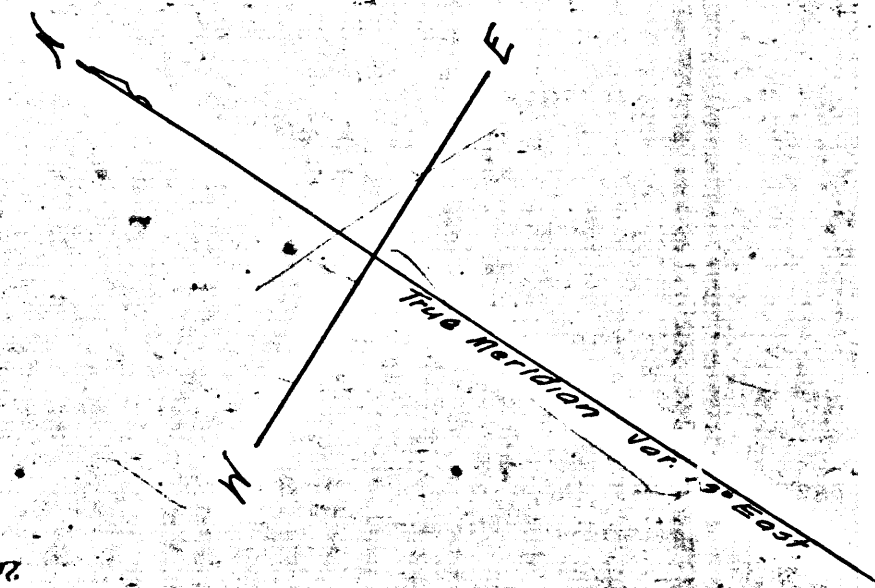


... of partition and in T. & Tr. Co. decree reserves therefrom a ... side of said lot for road ... by blanket resolutions ... there being no further County Surveyor 9-19-25

MAP

Showing the Partition of that certain 120 ⁷/₁₀₀ Acre Tract belonging to the Estate of Pedro Talamantes Deceased (No 7078 Superior Court) which was allotted to him, Decree of Partition of the Rancho La Ballona in the Suit John D Young et al. vs Ygnacio Machado et al. in the District Court of the 17th Judicial District of the State of California in and for Los Angeles County A.D. 1868 Case No 965 Note under said Decree of Partition two Parcels of Land were allotted to Pedro Talamantes one of which contained 18 ¹/₁₀₀ A. and the other contained 42 ²⁴/₁₀₀ A. This map shows the 120 ⁷/₁₀₀ A. Allotment only. Surveyed at request of Henry H. Osborne Commissioner to partition the Estate of Pedro Talamantes Deceased in April 1889 by J. A. Bernal surveyor.

C.F. 187.
S.C.C. 7078.
Estate of Pedro Talamantes
Probate.
Decree of Partition, Jun. 23, 1889.
Minute and Order Book, 24-247.
Partition by this map as noted in Broom.
Decree mentions a Second Piece containing 42.2444
not shown on this map.



Scale 4chs to an inch

33° E. 196.00	9.51	9.51	9.32	5.33° E 184.97	16.32	16.32 1/2	16.33	6.78	6.78
LOT 22	LOT 21	LOT 20	LOT 19	LOT 18	LOT 16	LOT 15	LOT 14	LOT 13	
5.29 Acres	5.29 Acres	5.00 Acres	5.00 Acres	8.55 Acres	8.55 Acres	8.55 Acres	3.55 Acres	3.55 Acres	
9.51	9.51	9.51	9.51	16.32	16.32 1/2	16.33	6.78	6.78	
3° N. 186.00				N. 33° W. 185.04					

Land formerly owned by Manuel Valenzuela

For road in lot 18 See D. 5766-92 219-78

2
C.F. 187

