

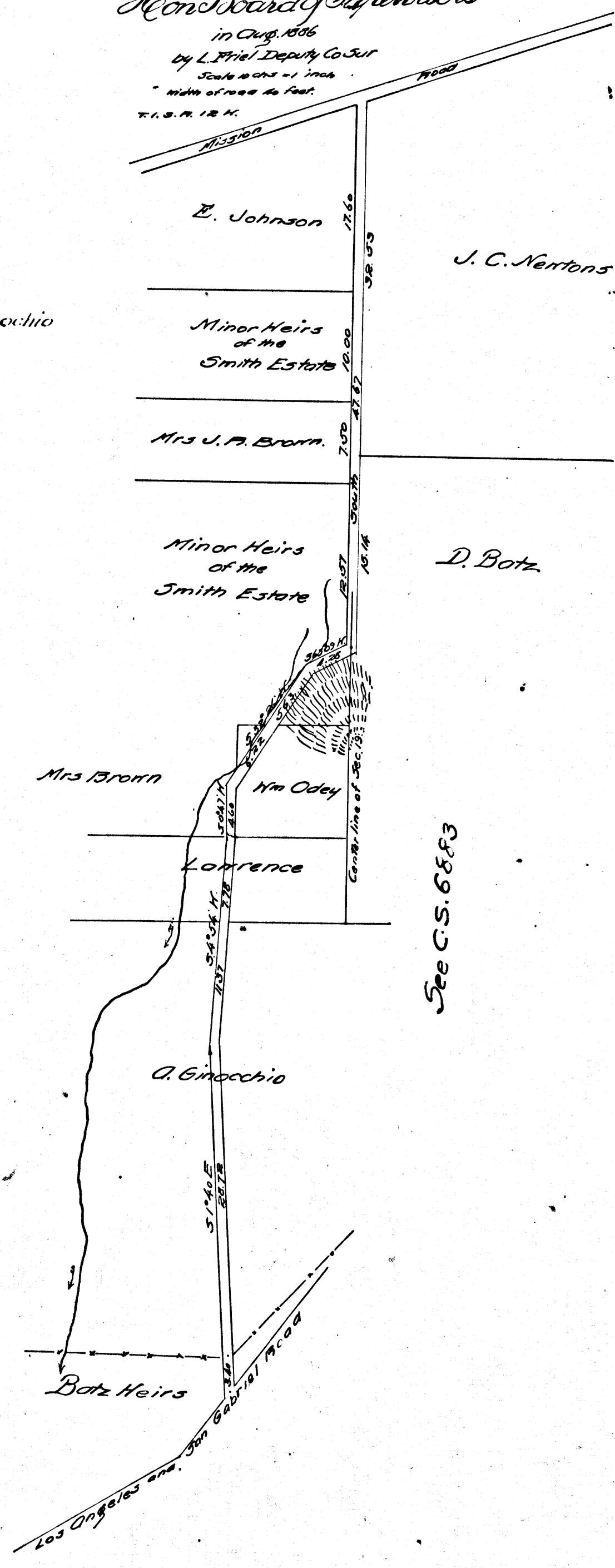
N

Map  
of the

Changed to  
**Farmdale Ave - Brown County Road -**  
See D:13-2

Surveyed under instructions  
from the  
**Board of Supervisors**  
in Aug. 1886  
by L. Friel Deputy Co. Sur.  
Scale 1/2 inch = 1 mile  
Width of road 20 feet.  
T. 1 S. R. 12 W.

Action on this Case L.A. County vs. A. Cimocchio  
was discontinued  
Stipulation to discontinue, Feb. 27-1889.



See C.S. 6883

C.F. 188

Filed May 21 1888