

Map of the Solano Tract

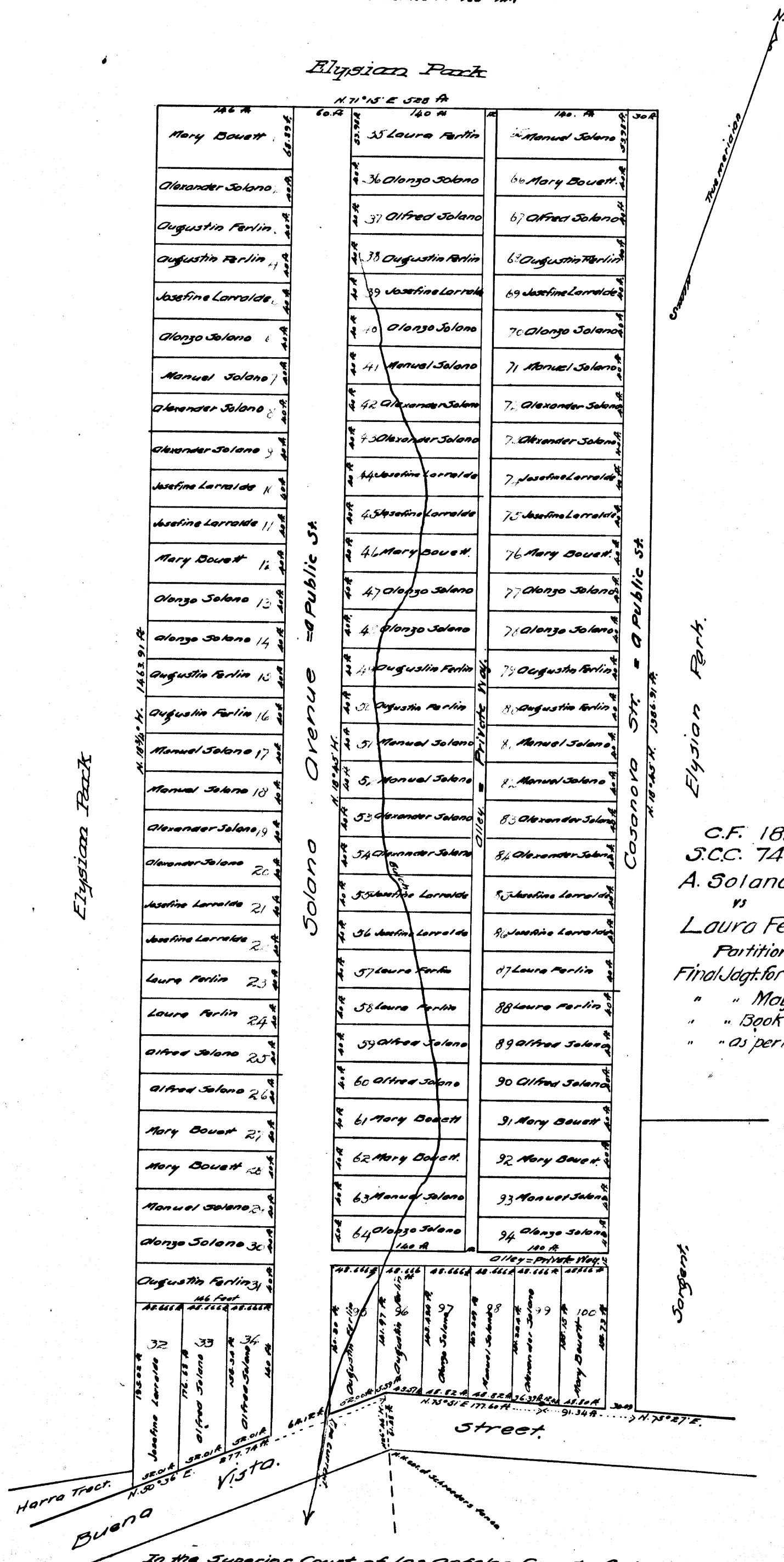
in the City of Los Angeles, Cal.

showing

the partition thereof made under the decree of the Superior Court of the County of Los Angeles, State of California Case No 7410 of date April 3-1888 by the Referees in partition Juan Bernard Jean Jentous and George Hansen Surveyed by Hansen & Solano Apr. 1888.

Scale of 1 in to 100 ft.

True courses - Var. 14° 15' E.
The distances are represented in feet
The numbers of lot are marked in red ink



C.F. 189
S.C.C. 7410
A. Solano et al.
vs
Laura Ferlin.
Partition.
Final Jdgt. for Pitt.
" " May 1-1888
" " Book 8-330.
" " as per this map.

C.F. 189

In the Superior Court of Los Angeles County Cal.
Alfred Solano et al. vs Laura Ferlin

We the undersigned Referees in partition in this suit do hereby certify that this map shows the division made by us of the Solano Tract, and is the Map referred to in our report of partition of this date Los Angeles April 24/88.

Juan Bernard
Jean Jentous
George Hansen

Filed May 1 1888