

Plat
of
Lot 1 and part of Lot 2, in Blk C of the Desnoyers Tract
Los Angeles City, California
Surveyed in November 1888, by George B King

Scale - 30 feet to one inch

Filed Aug 22 1889.

C.F. 190.

S.C.C. 7541.

John J. Lysaght

vs

E. D. Crowell.

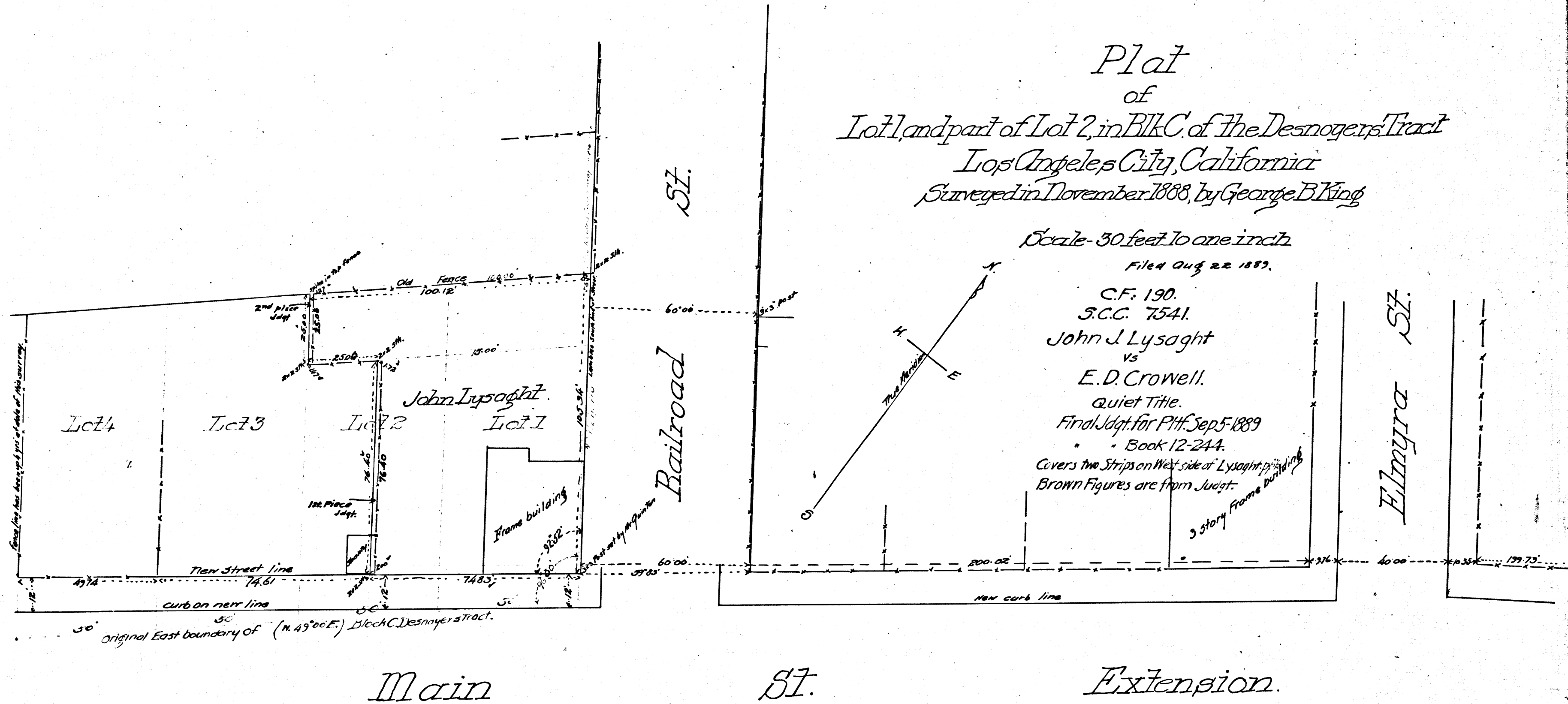
Quiet Title.

Final Jdgt. for P.H. Sep 5 1889

Book 12-244.

Covers the Strips on West side of Lysaght's building
Brown Figures are from Jdgt.

3 story Frame Building



This is a copy of the original
N 55° 12' E 130.

50' original East boundary of (N. 43° 00' E.) Block C Desnoyers tract.

C.F. 190

