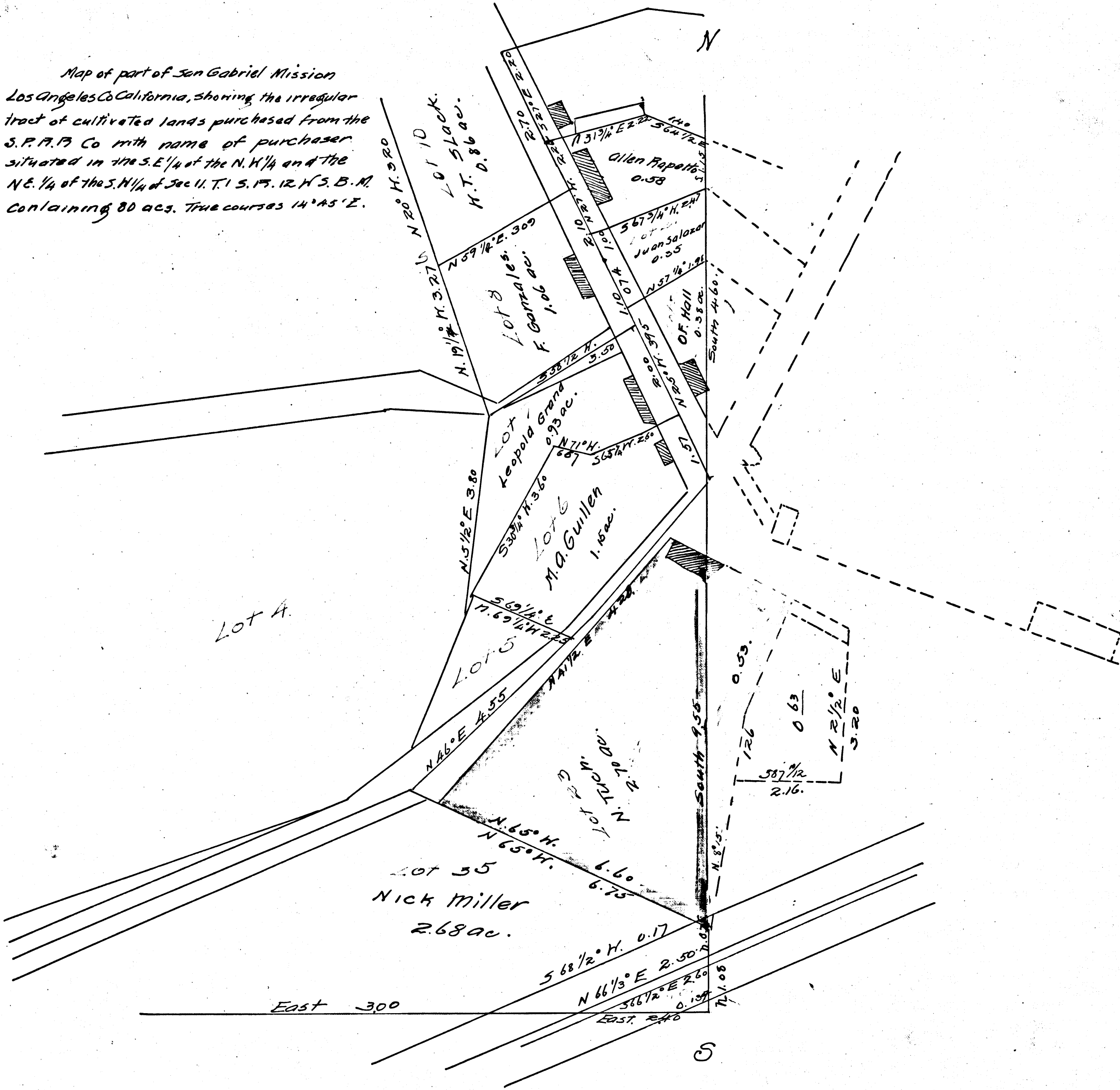
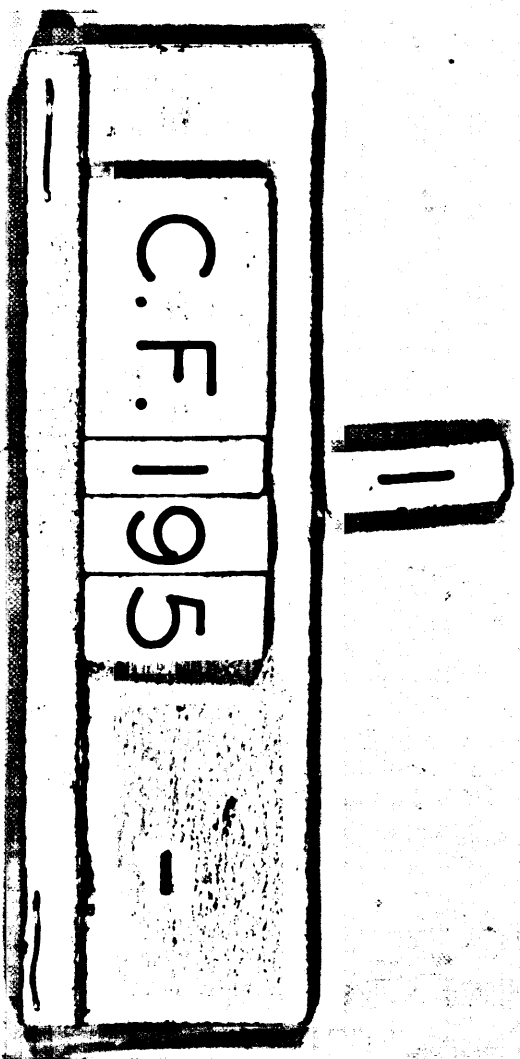


Ex. B.

Map of part of San Gabriel Mission
 Los Angeles Co California, showing the irregular
 tract of cultivated lands purchased from the
 S. P. P. Co with name of purchaser
 situated in the S.E. 1/4 of the N. 1/4 and the
 N.E. 1/4 of the S. 1/4 of Sec 11, T. 1 S. 15. 12 N S. B. M.
 containing 80 acs. True courses 14° 45' E.



Made Feb 20 1880 by John Goldsworthy, Sur.



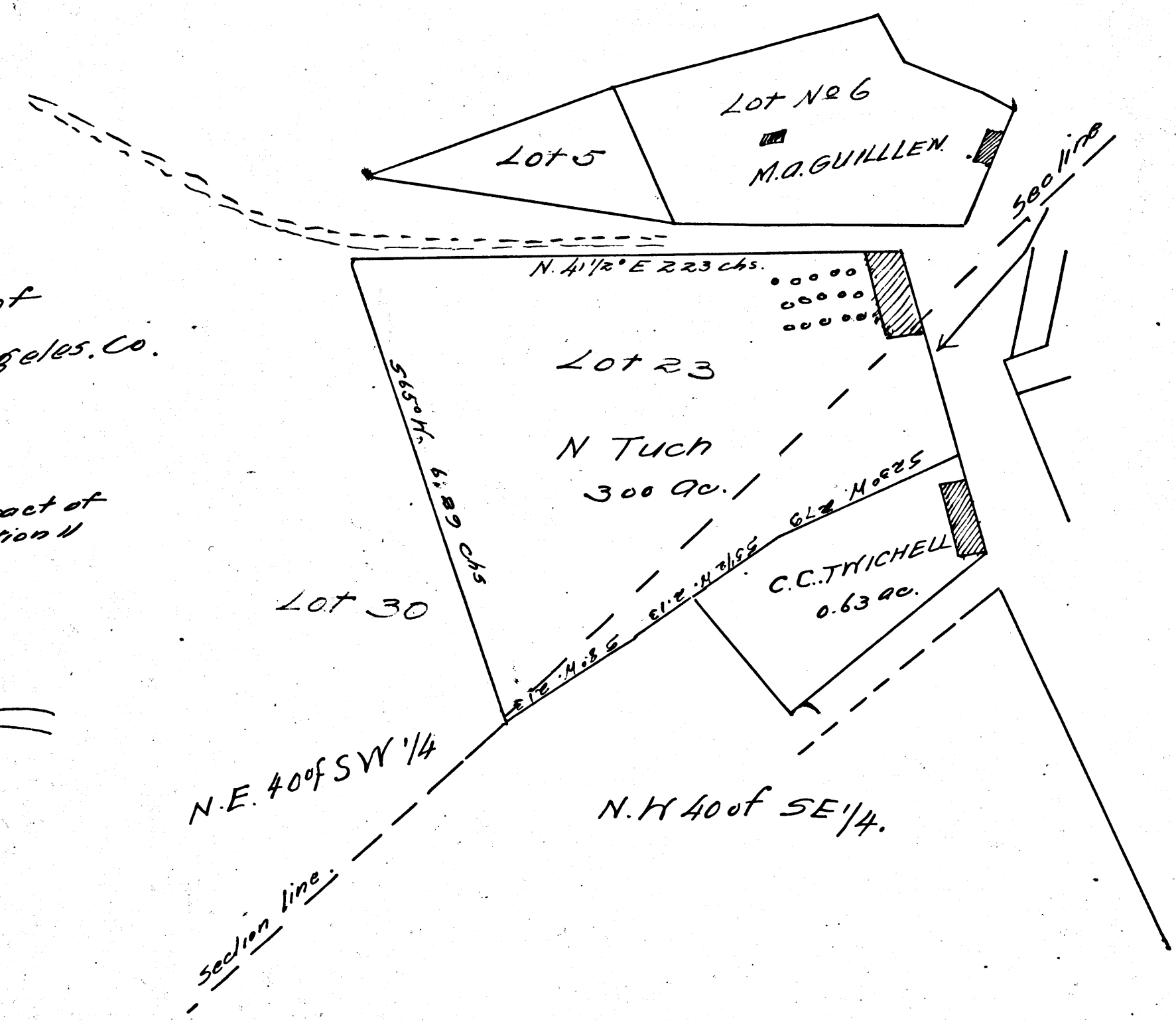
C.F. 195
 S.C.C. 10042
 Estate of Nathan Tuck.
 Probate.
 Final Account Approved
 July 9, 1892.

957
10TH
26 28 30 32 34 36 38 40 42 44 46 48 50 52 54 56 58 60 62 64 66 68 70 72 74 76 78 80 82 84 86 88 90

Map of Mission of
San Gabriel, Los Angeles, Co.
California.

Showing the irregular tract of
cultivated land within section 4
T. 1 S. R. 12 W. S. 4 M.
Var. 14.45 East.
2 chs to inch.

Surveyed May 1870
By H. M. Johnston



EX. A.

2
C.F. 195