

KENT ST.

LAKE

SHORE

AVENUE.

PLAT

- OF -

BLOCK 5

- OF -

A SUBDIVISION OF PARTS OF  
LOTS 5 AND 6, BLOCK 40,

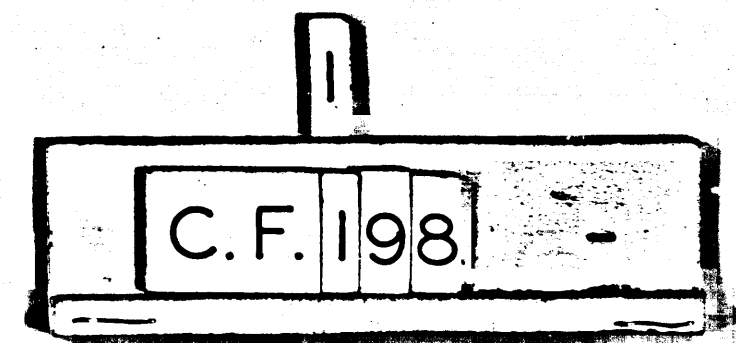
City Donation Lots.

Scale 20 ft. to the inch.  
M.R. 6-330.

FF

Q

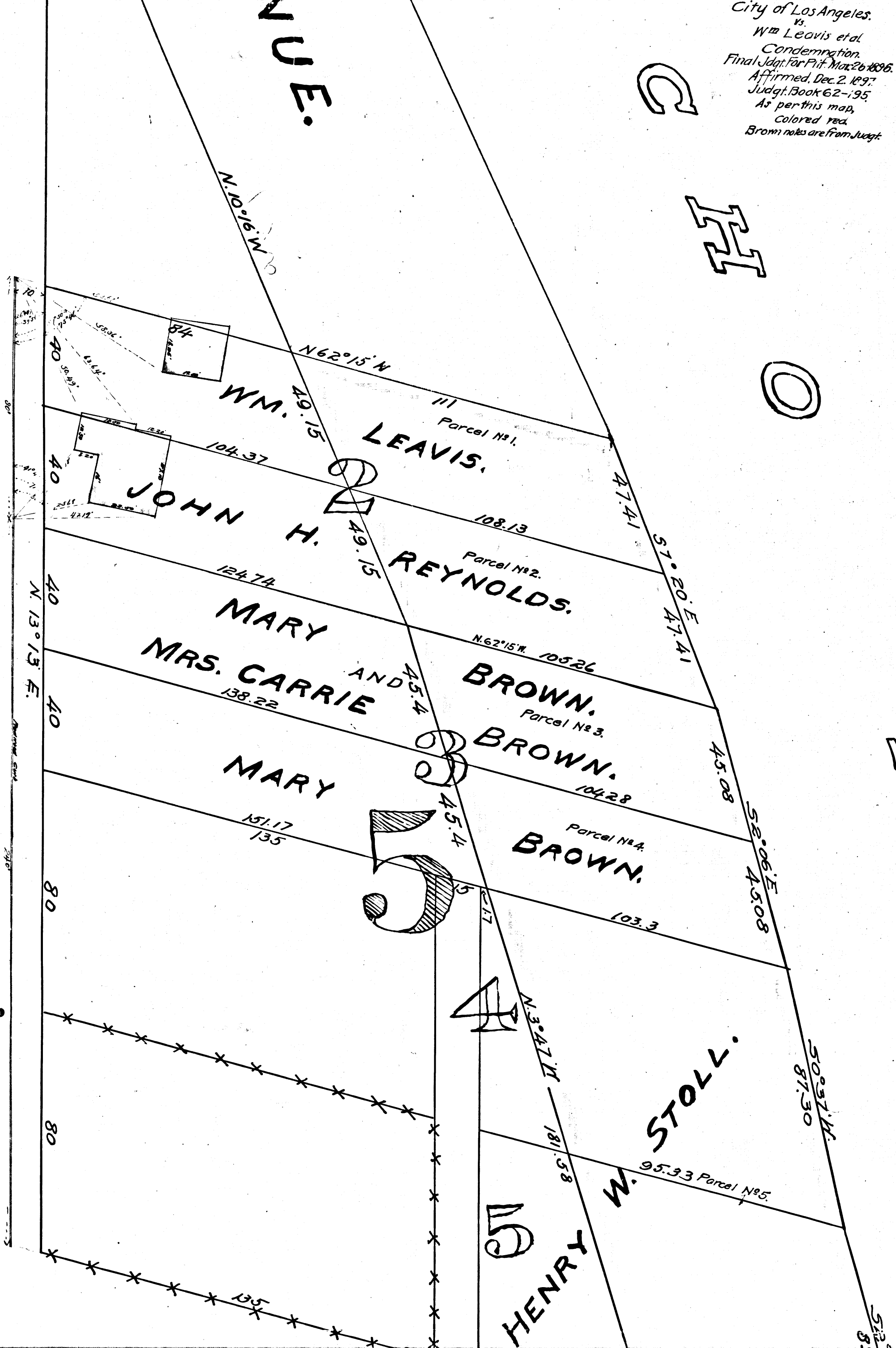
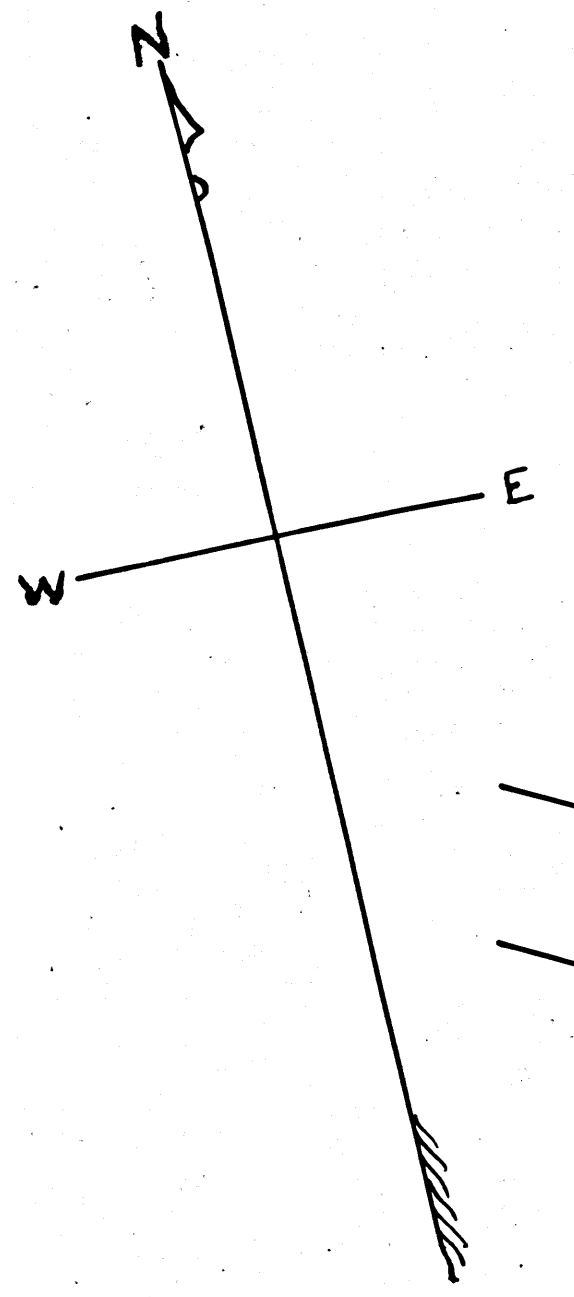
C.F. 198.  
S.C.C. 24389.  
City of Los Angeles.  
vs.  
Wm Leavis et al.  
Condemnation.  
Final Jdgt. for Pitt. Mar. 26-1896.  
Affirmed Dec. 2. 1897.  
Jdgt. Book 62-195.  
As per this map,  
colored red.  
Brown notes are from Jdgt.



City of Los Angeles.  
vs.  
Wm Leavis et al  
Condemnation.  
Final Jdgt. for Pitt. Max 26 1896.  
Affirmed, Dec. 2, 1897.  
Judgt. Book 62-195  
As per this map,  
Colored red.  
Brom notes are from Judgt.

C  
H  
O

BELMONT AVENUE.



P  
A  
R  
K

2  
C.F. 198



AVENUE.

ARK.

Parcel N4.  
BROWN.

STOLL.

HENRY W.

BELLEVUE

AVENUE.

LAKE SHORE AVE.

