

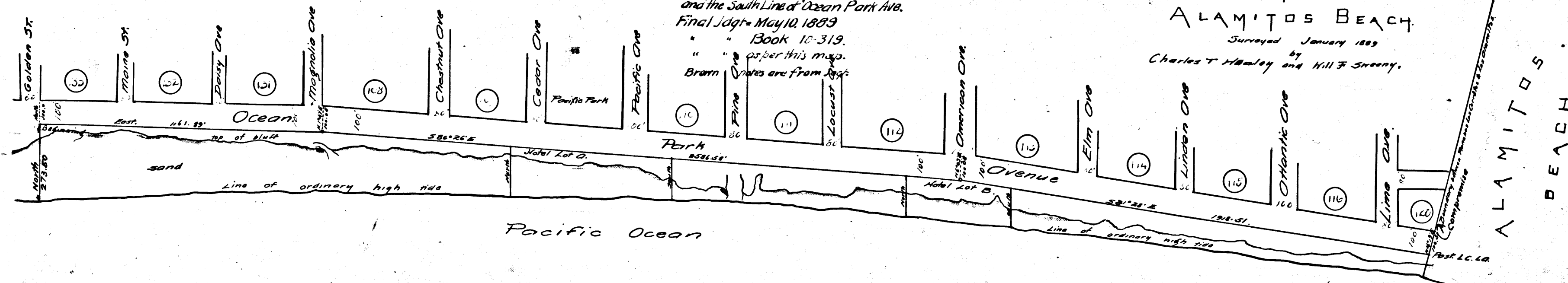
Map
 OF THE
 OCEAN FRONT
 OF THE
 CITY OF LONG BEACH
 FROM
 GOLDEN STREET
 TO
 ALAMITOS BEACH.
 Surveyed January 1889
 by
 Charles T. Halsey and Hill F. Sweeney.

C.F. 205
 S.C.C. 10455
 Long Beach Land and Water Co.
 vs.
 City of Long Beach.

Injunction - etc.
 F.J. Quib's title in Plif to Land between ord. high tide
 and the South Line of Ocean Park Ave.
 Final Jdgt. - May 10, 1889
 Book 10-319.
 as per this map.
 Brown lines are from Jdgt.

Scale = 1 inch = 75 feet.

North



C.F. 205

THERE IS NO SATISFACTORY SUBSTITUTE FOR AN ELECTRIC CLEANER

BUY A "KENMORE"