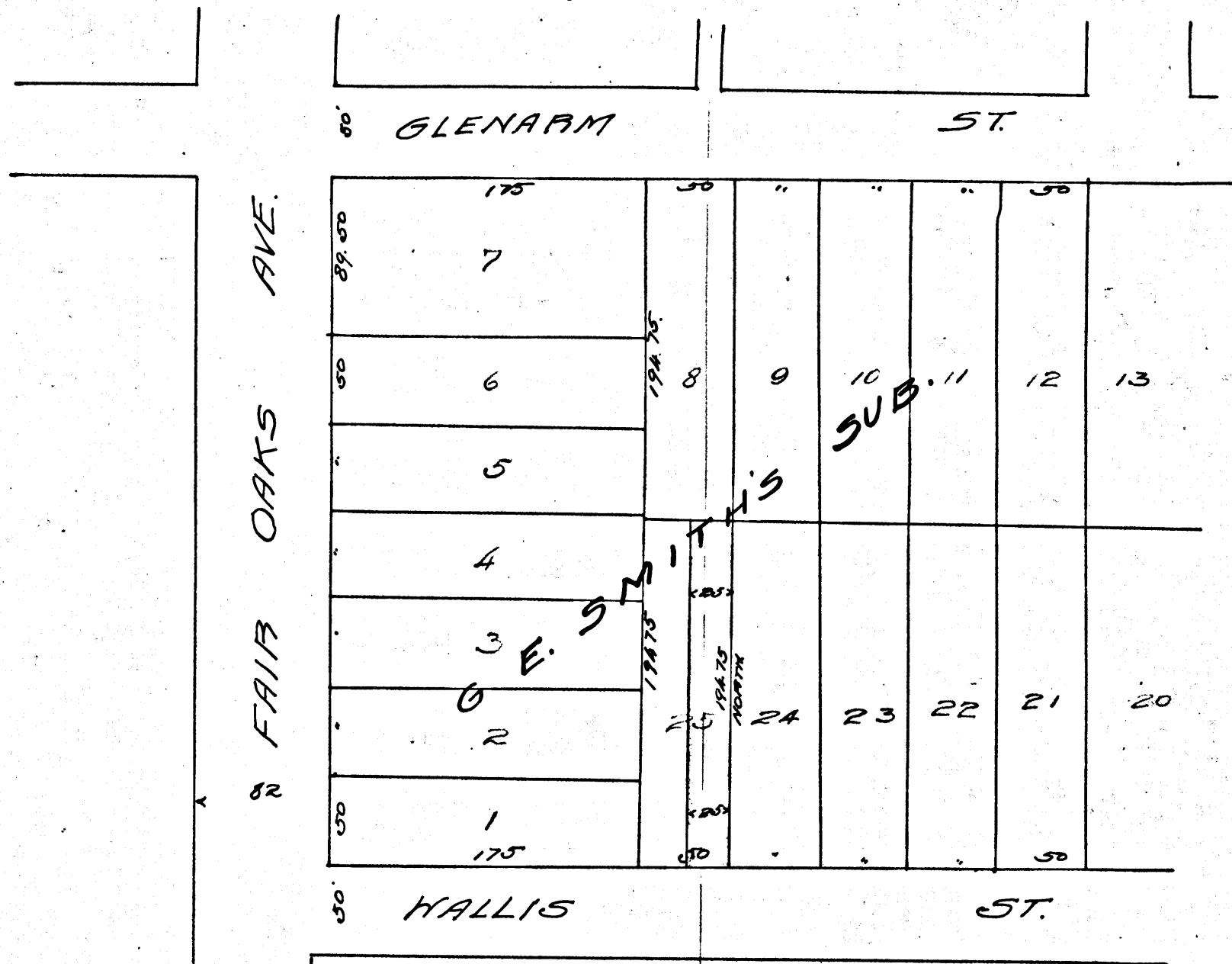


Exhibit A. Platt 1



C.F. 212.  
S.C. 10910.  
Los Angeles, Pasadena & Glendale Ry. Co.  
vs  
Alfred B. Chapman  
Condemnation.  
Judgment Dismissing case Oct. 8-1890.  
J. Book 22-214.  
Filed Oct 8<sup>th</sup> 1890  
Judgt. does not mention map.

C.F. 212