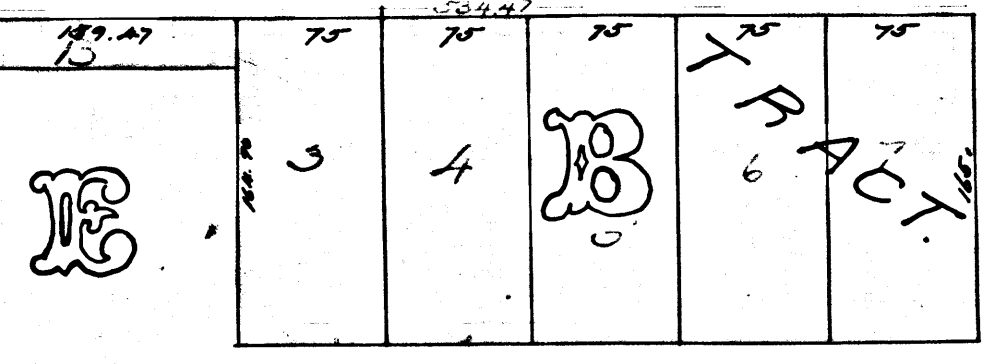


C.F. 219.
 S.C.C. 11669
 Los Angeles, Pasadena and Glendale Ry. Co.
 vs.
 Walter L. Wotkyns.
 Condemnation.
 Filed for Plat. Mar. 5-1890.
 " Book 18-123.
 Condemns a 20' strip, 534.47' long from
 Oak Hill Ave to Meridian Ave. on CL Grevelia Drive.



Scale 100 ft = 1 inch.
 Filed Mar 5th 1890.

Grevelia Dr. changed to Grevelia St. - D: 88-33, Ord. 754

*Replat the Bureau
 MR 17-3'*

Verdian for Plat

J Book 18-

C.F. 219 - 1